



GROUND FORCE® GO KART (V.1+) THROTTLE INSTALLATION INSTRUCTIONS

Tools Required: (Not included)

- A. 2.5mm Allen wrench
- B. 4mm Allen wrench
- C. 5mm Allen wrench
- D. Phillips head screwdriver

⚠ CAUTION: To avoid potential shock or other injury, turn power switch **OFF** and disconnect charger before removing or installing the batteries. Failure to follow these steps in the correct order may cause irreparable damage.

Step 1

Using a 5mm Allen wrench, remove the four hex bolts that attach the seat to the frame.

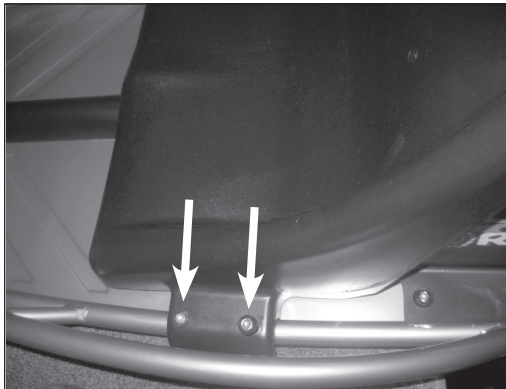


Figure 1

Step 2

Using a 5mm Allen wrench, remove the hex bolt on the steering wheel and place steering wheel to the side.

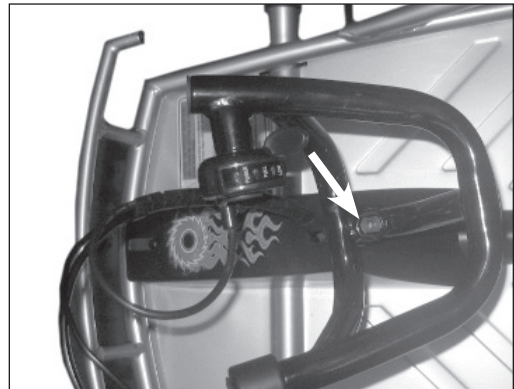


Figure 2

Step 3

Using a Phillips head screwdriver, remove the two screws on the steering column cover and carefully cut the zip tie holding the wires together.



Figure 3

Step 4

Using a 2.5mm Allen wrench loosen the set screw located under the light indicator on the throttle casing and remove throttle from steering wheel.



Figure 4

Step 5

Using a 4mm Allen wrench, remove the two hex bolts on the battery cover and remove.



Figure 5

Step 6

Follow the wires down from the throttle to the control module. Disconnect the throttle by depressing the tab on the white plastic connector attached to the control module (See Insert). Carefully cut zip tie and remove throttle

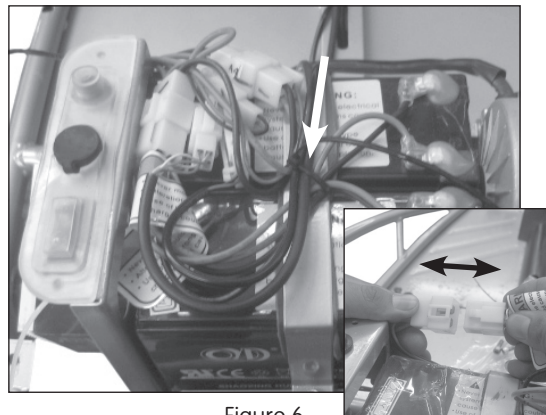


Figure 6

Step 7

Place the new throttle on the handlebar. Secure throttle in place by re-tightening the set screw under the light indicator. Reconnect the white plastic connector at the end of the throttle back into the white plastic connector on the control module.

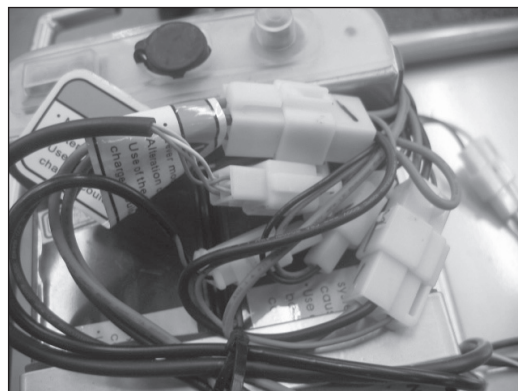


Figure 7

Step 8

Reattach the battery cover, steering wheel, steering cover and seat. Tighten securely into place using the same hardware previously removed.

ATTENTION: Charge unit at least 18 hours before riding.

v1 - 12/09