



## NOTICE

The Yerf-Dog SCOUT CUV Limited Warranty appears on the last pages of this manual. No other warranties, express or implied, are contained herein. Please fill out and return the warranty registration form located on the back pages of this manual.

Yerf-Dog is not liable for errors in this manual or for incidental or consequential damages that result from the use of the material in this manual.

This manual contains proprietary information that is protected by copyright. All rights are reserved. No part of this manual may be photocopied, reproduced, or translated to another language without the written consent of Yerf-Dog.

The information contained in this document is subject to change without notice. Photos may vary slightly because of design improvements.

Yerf-Dog reserves the right to make design changes to vehicles without obligation to make these changes on units previously sold.

These vehicles do not conform to Federal Motor Vehicle Safety Standards for automobiles or to FMVSS 500 for low-speed vehicles, and are not equipped for operation on public streets, roads, or highways.

**Yerf-Dog**  
**1743 S. Horne #100**  
**Mesa, AZ 85204**  
**Customer Service: 888.926.6554**  
**[www.yerf-dog.com](http://www.yerf-dog.com)**

## SCOUT Feedback Form

Please use this form to send us any comments on your experience with the Yerf-Dog SCOUT CUV. We appreciate your comments.

This image shows a single sheet of white paper with horizontal ruling lines. The lines are evenly spaced and run across the width of the page. There are no margins, text, or other markings on the paper.

Please Fax, Email or Mail your comments to our Yerf-Dog Customer Service Center.

SCOUT Feedback  
Flexible Flyer Wheel Goods  
1743 S. Horne #100  
Mesa, AZ 85204

Phone: 888-926-6554  
Fax: 602-324-1855

customerservice@yerf-dog.com

## FORWARD

Thank you for choosing the SCOUT by Yerf-Dog. You are about to experience the most practical, well engineered Compact Utility Vehicle (CUV). We expect this vehicle to last for years to come with proper user operation and maintenance. We would like to facilitate this by recommending that you read and follow all proper user operation and maintenance recommendations in this owner's manual.

Beyond the regular maintenance of this utility vehicle your safety and comfort are of utmost importance to us. In order to maintain the optimum safe, comfortable operating performance of this unit we urge you to read, and follow each step of the operating instructions in this manual. If you provide this unit for use by others we encourage you to recommend the reading and strict adherence to the recommendations in this manual.

If for any reason you do have problems with this unit we ask that you contact our customer service staff by dialing toll free in U.S. 1-888-926-6554 (Monday - Friday, 7:00am to 11am, 12pm to 4:00pm, MST). They will be glad to assist you.

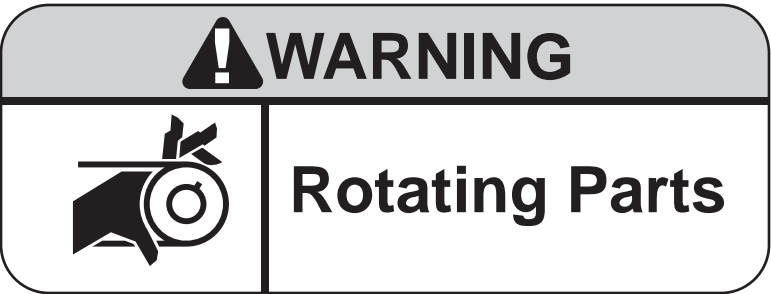
Please consider this manual as an integral part of your unit, and in the case of transfer to a new owner, we recommend that you provide the manual as part of the package.

Please complete the warranty registration and file this owners manual in a safe place for frequent use.

# Be Safe

Safe operation of your vehicle is of utmost importance to us. It is your obligation to view and fully understand all warning decals such as the one above that are applied on your vehicle.

A copy of the decals and a description of their location on the vehicle appear on pages 8-9. If at any time a decal becomes damaged or faded, please contact our Customer Service Center at 1-888-926-6554 for a replacement.



# Be Aware

On initial running of your unit, you will likely see a small amount of white smoke coming from the muffler. Do not be alarmed. Your muffler is new and various residues are burning away. There is no risk of flame. After adequate run time (approximately one hour) all residues will have dissipated.

On initial operation of your unit, you may have difficulty shifting into forward and reverse. If you have this difficulty, slightly rock your unit from side to side to allow the gears in the transmission to align properly. Through use and knowledge of operations, shifting of your unit will become easier.

## Your Hardware bag should contain the following

Owners Manual  
(2) Keys

BRUSH GUARD ASSEMBLY  
(2) 4x2 Decals (see page 48  
for suggested decal placement).

SEAT BELT ASSEMBLY  
(2) Seat Belts  
(4) 7/16" Bolts  
(4) 7/16" Lock Washers  
(4) 7/16" Locknuts

STEERING WHEEL ASSEMBLY  
(2) 3/8" x 1" Bolts  
(2) 3/8" Nyock Nuts



## Warranty Registration Form

Please fax or mail the following form along with a copy of your receipt to our YERF-DOG Customer Service Center.

Flexible Flyer Wheel Goods  
CUV Warranty  
1743 S. Horne #100  
Mesa, AZ 85204

Phone: 888-926-6554  
Fax: 602-324-1855

|  |  |                |                |
|--|--|----------------|----------------|
| Last Name:   |  | First Name:    |                |
| E-Mail:  |  |                |                |
| Purchase type:   |  | Business Name: |                |
| <input type="checkbox"/> Individual<br><input type="checkbox"/> Business |  |                |                |
| Address:   |  |                |                |
| Address Line 2:  |  |                |                |
| City:  |  | State/Prov.:   |                |
| Zip/Postal Code:   |  | Country:       |                |
| Telephone Number(s):   |  |                |                |
| Where Purchased (Location and Dealer Name):                              |  |                | Purchase Date: |
| Model:   |  | Serial Number: |                |
| Primary Vehicle Use:   |  |                |                |

## PROPOSITION 65- STATE OF CALIFORNIA

### ⚠️ WARNING

This product contains or emits chemicals or substances that have been determined by the state of California to cause cancer and birth defects or other reproductive harm.

## WARRANTY

## LIMITED WARRANTY FOR YERF-DOG CUV COMMERCIAL & CONSUMER EQUIPMENT (U.S. ONLY)

**GENERAL PROVISIONS** – The warranties described below are provided by Yerf-Dog to the original purchasers of new Commercial & Consumer Equipment from our authorized dealers. Under these warranties, Yerf-Dog will repair or replace, at its option, any covered part which is found to be defective in material or workmanship during the applicable warranty term. Warranty service must be performed by a designated service center authorized by Yerf-Dog to sell and/or service the type of product involved, which will use only new or remanufactured parts or components furnished by Yerf-Dog. Warranty service will be performed without charge to the purchaser for parts or labor. The purchaser will be responsible, however, for any service call and/or transportation of product to and from the service center's place of business, for any premium charged for overtime labor requested by the purchaser, and for any service and/or maintenance not directly related to any defect covered under the warranties below. Under certain conditions Yerf-Dog may authorize certain service work to be performed by authorized service centers after the expiration of the warranty term.

**WHAT IS WARRANTED** – All parts of any new Yerf-Dog product, except tires, and batteries, are warranted for the number of months or operating hours specified below. Warranty statements required by law covering engine emission-related parts and components are found in the Operator's Manual delivered with the machine.

**EXCLUSIONS** - The following are specifically excluded from the terms and provisions of this warranty: (1) Any Yerf-Dog vehicle used to carry loads in excess of the maximum vehicle load including occupants and cargo as specified by the owners manual; (2) Any Yerf-Dog vehicle used to tow loads in excess of the maximum trailer weight and tongue weight as specified in the owners manual; (3) Any Yerf-Dog vehicle used for rental purposes; (4) Any utility vehicle accessories.

## COMMERCIAL & CONSUMER EQUIPMENT/ WARRANTY TERM

1) In Residential (private homeowner- personal use) Application : 12Months

2) In Any Other Application: 12 Months

Each warranty term begins on the date of product delivery to the purchaser.

**WHAT IS NOT WARRANTED – YERF-DOG IS NOT RESPONSIBLE FOR THE FOLLOWING:** (1) Used Products; (2) Any product that has been altered or modified in ways not approved by Yerf-Dog, including, but not limited to, setting injection pump fuel delivery above Yerf-Dog specifications; (3) Depreciation or damage caused by normal wear, lack of reasonable and proper maintenance, failure to follow operating instructions, misuse, lack of proper protection during storage, or accident; (4) Normal maintenance parts and service.

**SECURING WARRANTY SERVICE** – To secure warranty service, the purchaser must (1) report the product defect to an authorized service center and request repair within the applicable warranty term, (2) present evidence of the warranty start date, and (3) make the product available to the service center within a reasonable period of time.

**LIMITATION OF IMPLIED WARRANTIES AND OTHER REMEDIES – COMMERCIAL & CONSUMER EQUIPMENT** – To the extent permitted by law, neither Yerf-Dog nor any company affiliated with it makes any warranties, representations or promises as to the quality, performance or freedom from defect of the Commercial & Consumer Equipment covered by this warranty. IMPLIED WARRANTIES OF MERCHANTABILITY AND FITNESS FOR A PARTICULAR PURPOSE, TO THE EXTENT APPLICABLE, SHALL BE LIMITED IN DURATION TO THE APPLICABLE PERIOD OF WARRANTY SET FORTH ON THIS PAGE. THE PURCHASER'S ONLY REMEDIES IN CONNECTION WITH THE BREACH OR PERFORMANCE OF ANY WARRANTY ON THE YERF-DOG COMMERCIAL & CONSUMER EQUIPMENT ARE THOSE SET FORTH ON THIS PAGE. IN NO EVENT WILL THE DEALER OR ANY COMPANY AFFILIATED WITH YERF-DOG BE LIABLE FOR INCIDENTAL OR CONSEQUENTIAL DAMAGES. (Note: Some states do not allow limitations on how long an implied warranty lasts or the exclusion or limitation of incidental or consequential damages so the above limitations and exclusions may not apply to you.) This warranty gives you specific legal rights, and you may also have other rights which vary from state to state.

**NO DEALER WARRANTY** – THE DEALER MAKES NO WARRANTY OF ITS OWN AND THE DEALER HAS NO AUTHORITY TO MAKE ANY REPRESENTATION OR PROMISE ON BEHALF OF YERF-DOG, OR TO MODIFY THE TERMS OR LIMITATIONS OF THIS WARRANTY IN ANY WAY.

**If further information is desired, contact our customer service center (1-888-926-6554).**

## TABLE OF CONTENTS

|  |    |
|--|----|
| Safety Details . . . . .                           | 6  |
| General Warnings . . . . .                         | 7  |
| Decal Placement . . . . .                          | 8  |
| Vehicle Model Identification . . . . .             | 10 |
| Controls and Indicators . . . . .                  | 10 |
| Pre-Operation and Daily Safety Checklist . . . . . | 14 |
| Driving and Operating Instructions . . . . .       | 15 |
| CUV Break-In Period . . . . .                      | 17 |
| Bed Latch . . . . .                                | 18 |
| Prop Rod . . . . .                                 | 19 |
| Loading and Unloading . . . . .                    | 19 |
| Towing with the Vehicle . . . . .                  | 20 |
| Transporting on a Trailer . . . . .                | 20 |
| Storage . . . . .                                  | 21 |
| Maintenance . . . . .                              | 23 |
| Periodic Service Schedule . . . . .                | 23 |
| Periodic Lubrication Schedule . . . . .            | 25 |
| Engine Oil . . . . .                               | 26 |
| Engine Oil Change . . . . .                        | 27 |
| Transmission Oil Change . . . . .                  | 27 |
| Fueling Instructions . . . . .                     | 28 |
| Battery . . . . .                                  | 28 |
| Spark Plug . . . . .                               | 30 |
| Drive Chain . . . . .                              | 30 |
| Suspension . . . . .                               | 30 |
| Cleaning the Vehicle . . . . .                     | 30 |
| Consumer Assembly and Installation . . . . .       | 31 |
| Steering Column Assembly . . . . .                 | 31 |
| Cargo Box Assembly and Installation . . . . .      | 32 |
| Front Bumper Installation . . . . .                | 34 |
| Brush Guard Assembly and Installation . . . . .    | 34 |
| Trouble Shooting Guide . . . . .                   | 37 |
| Vehicle Specifications . . . . .                   | 38 |
| Replacement Parts List . . . . .                   | 39 |
| Warranty . . . . .                                 | 48 |



SAFETY DETAILS

!!! INTRODUCTORY SAFETY MESSAGE TO OWNERS !!!

A SCOUT vehicle IS NOT A TOY AND CAN BE HAZARDOUS TO OPERATE. A SCOUT vehicle handles differently from other vehicles including ATV’s and cars. A collision or rollover can occur quickly, even during routine maneuvers such as turning and driving on hills or over obstacles. You must take proper precautions!

You should read this owner’s manual and all warning decals on the vehicle. Then periodically review this information on a regular basis.

Licensed drivers differ in skills, physical abilities, and judgment. Some licensed drivers may not be able to operate a Yerf-Dog SCOUT safely. **Never** allow anyone to operate a Yerf-Dog SCOUT who is not a licensed driver or at least 16 years of age or who has not first read this owner’s manual. **Never** allow anyone to use this vehicle if he or she does not have the ability or judgement to operate it safely in accordance with the warnings and instructions in this manual and on the vehicle itself.

MAKE CERTAIN EACH OPERATOR UNDERSTANDS ALL WARNING DECALS AND THIS OWNER’S MANUAL BEFORE OPERATING THE VEHICLE.

⚠ WARNING

This owner's manual should be read completely before attempting to operate or service the vehicle. Failure to follow the warnings or instructions in this manual could result in property damage, severe personal injury, or death.

It is important to note that some vital statements throughout this manual and on the decals affixed to the vehicle are preceded by the words DANGER, WARNING, or CAUTION. For your protection, we recommend that you take special notice of these safety precautions. Safety precautions are essential and must be followed.

If any of the operation or safety decals on the vehicle become damaged, have been removed, or cannot be easily read, they should be replaced immediately to avoid possible property damage, personal injury, or death. Contact our Customer Service Center: (U.S.) 1-888-926-6554.

PAY ATTENTION WHEN YOU SEE THE SYMBOLS BELOW

⚠ DANGER

A DANGER indicates an immediate hazard that will result in severe personal injury or death.

⚠ WARNING

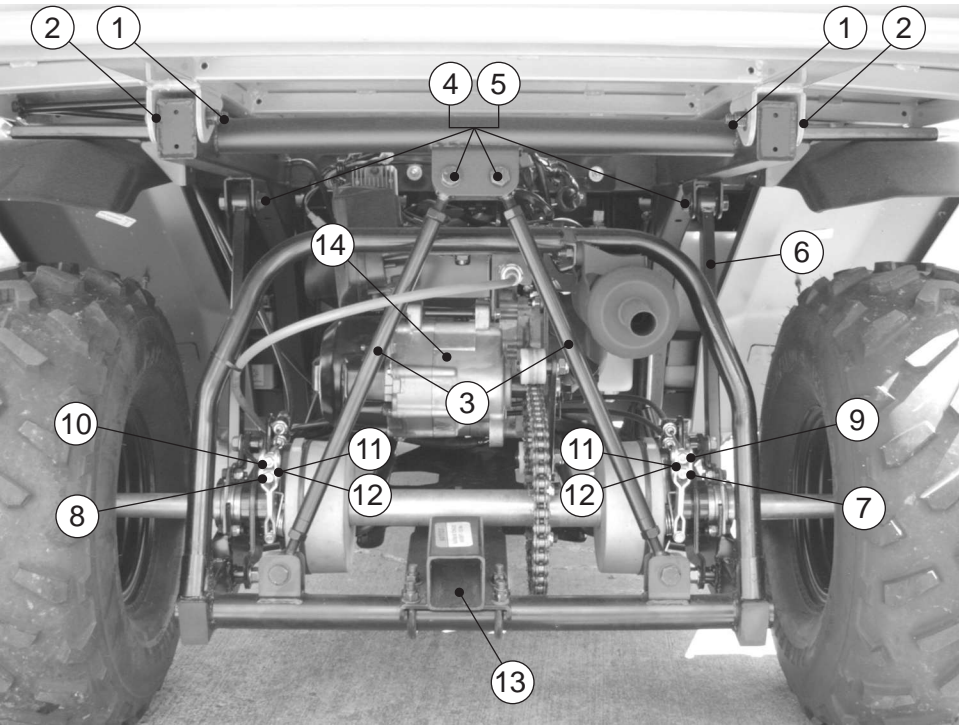
A WARNING indicates an immediate hazard that could result in severe personal injury or death.

⚠ CAUTION

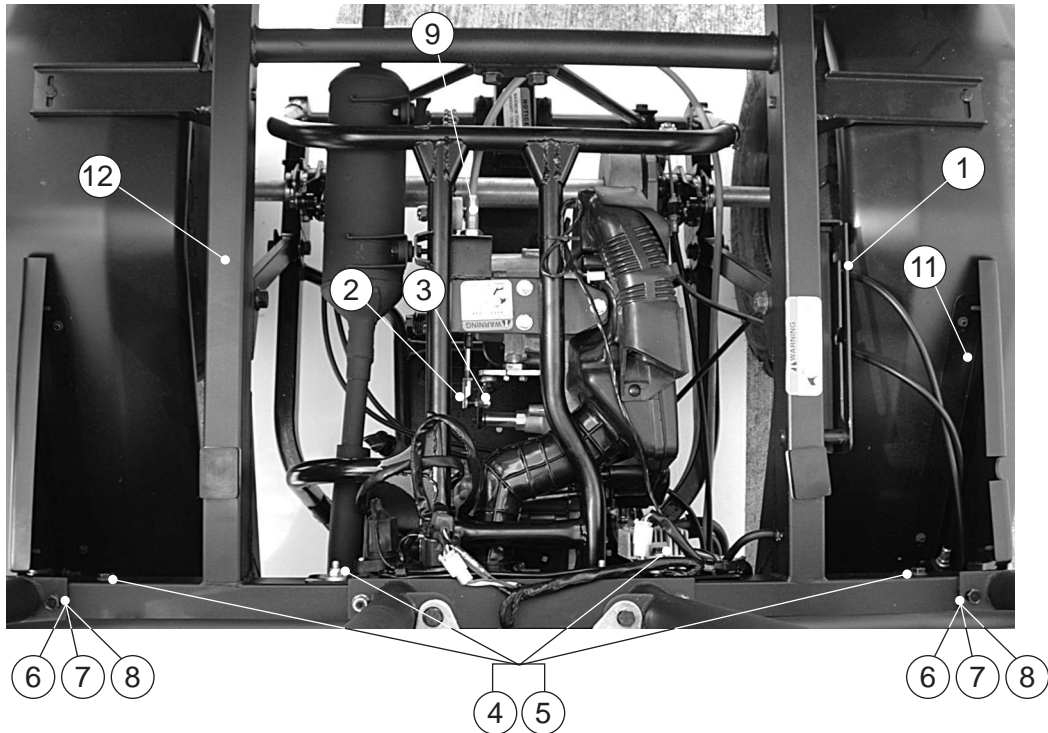
A CAUTION indicates a hazard or unsafe practice that could result in minor personal injury or product or property damage.

GENERAL WARNINGS

The following safety statements must be heeded whenever the vehicle is being operated, repaired, or serviced. Vehicle feature information also appears beginning on page 8. Other specific safety statements appear throughout this manual and on the vehicle itself.



| P/N | DESCRIPTION                                | FFA PART # |
|-----|--|------------|
| 1   | NUT; LOCK; 7/16                            | 05174      |
| 2   | BOLT; 7/16X2-1/2; GR5                      | 05175      |
| 3   | SWINGARM STABLIZER; ED BLACK               | 04145      |
| 4   | BOLT; 1/2-13X2; GR5; BLACK ZINC W / WASHER | 04696      |
| 5   | NUT; LOCK; FLANGE; 1/2-13; BLACK ZINC      | 04697      |
| 6   | SHOCK; SIMULATED; BLACK                    | 04403      |
| 7   | CABLE; PARK BRAKE RIGHT; 60-1/2            | 04702      |
| 8   | CABLE; PARK BRAKE;LEFT; 32-1/2             | 04664      |
| 9   | CABLE; BRAKE; RIGHT; 115"                  | 04701      |
| 10  | CABLE; BRAKE; LEFT; 102"; CUV              | 04663      |
| 11  | NUT; 1/4; THIN; PAL; BLACK ZINC            | 05314      |
| 12  | NUT; CENTER LOCK; 1/4-20                   | 04230      |
| 13  | ASSY; HITCH; REAR; W/HARDWARE              | 04731      |
| 14  | ASSY; DRIVE TRAIN; COMPLETE                | 04266      |



## **⚠ DANGER**

- **Battery - Explosive gases!** Do not smoke. Keep sparks and flames away from the vehicle and service area. Ventilate when charging or operating vehicle in an enclosed area. Wear a full face shield and rubber gloves when working on or near batteries.
- **Gasoline - Flammable! Explosive!** Do not smoke. Keep sparks and flames away from the vehicle and service area. Service only in a well-ventilated area.
- Do not operate gasoline vehicle in an enclosed area without proper ventilation. The engine produces carbon monoxide, which is an odorless, deadly poison.
- This vehicle will not provide protection from lightning, flying objects, or other storm related hazards. If caught in a storm while driving this vehicle, exit the vehicle and seek shelter in accordance with applicable safety guidelines for your location.

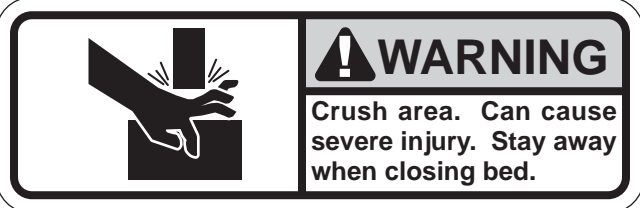
## **⚠ WARNING**

- Follow the procedures exactly as stated in this manual, and heed all DANGER, WARNING, and CAUTION statements in this manual as well as those on the vehicle.
- Do not leave children unattended on vehicle.
- Prior to leaving the vehicle unattended or servicing the vehicle, engage the parking brake, turn the key switch OFF, remove the key, and place the Forward/Reverse handle (gear shift lever) in the FORWARD or REVERSE position. Also chock the wheels when servicing the vehicle.
- Improper use of the vehicle or failure to properly maintain it could result in decreased vehicle performance, severe personal injury, or death.
- Any modification or change to the vehicle that affects the stability or handling of the vehicle, or increases maximum vehicle speed beyond factory specifications (23 m.p.h.), could result in severe personal injury or death and voids warranty.
- Check the vehicle for proper location of all vehicle safety and operation decals and make sure they are in place and are easy to read (see pages 8 & 9).
- Remove all cargo before raising the cargo bed or servicing the vehicle. Do not close cargo bed until all persons are clear of cargo bed area. Keep hands clear of all crush areas. Do not drop cargo bed; lower gently and keep entire body clear. Failure to heed this warning could result in severe personal injury or death.
- Only trained technicians should service or repair the vehicle. Anyone doing even simple repairs or service should have knowledge and experience in electrical and mechanical repair. The warnings and instructions in this manual must be followed when performing maintenance, service, or accessory installation. Failure to do so could result in decreased vehicle performance and /or severe personal injury or death.
- To avoid unintentionally starting the vehicle when conducting maintenance:
  - Disconnect battery cables, negative (-) cable first (see Battery section on page 28-29).
- Frame ground - Do not allow tools or other metal objects to contact frame when disconnecting battery cables or other electrical wiring. Do not allow a positive wire to touch the vehicle frame, engine, or any other metal component.
- Wear safety glasses or approved eye protection when servicing the vehicle. Wear a full face shield and rubber gloves when working on or near batteries. Failure to do so could result in personal injury.
- Do not wear loose clothing or jewelry such as rings, watches, chains, etc., when servicing the vehicle. Failure to do so could result in personal injury or death.
- Use insulated tools when working near batteries or electrical connections. Use extreme caution to avoid shorting of components or wiring.
- No one under 16 years of age or without a valid drivers license should ever operate this vehicle. Also, never leave unattended minors in the vehicle. Allowing either one could result in property damage, personal injury or death.

| P/N | DESCRIPTION                         | FFA PART # |
|-----|-------------------------------------|------------|
| 1   | SLIDER WELDMENT                     | 05173      |
| 2   | CABLE; END;SHIFT; 1/4-28;CUV        | 05188      |
| 3   | NUT; NYLOCK; 1/4-28;SHIFT CABLE END | 05324      |
| 4   | BOLT; 10MMX2-1/2; BLK Z; W / WASHER | 05317      |
| 5   | NUT; NYLOCK; 10MM; BLACK ZINC       | 05632      |
| 6   | BOLT; 3/8X3-1/4; GR5                | 05185      |
| 7   | WASHER; FLAT; 3/8                   | 05186      |
| 8   | NUT; LOCK; 3/8                      | 05187      |
| 9   | CABLE; THROTTLE; CUV                | 04144      |
| 11  | PLATE; REAR; FENDER; SUPPORT; CUV   | 04712      |
| 12  | ASSY; WDMT; MAIN FRAME; BLACK; CUV  | 04654      |



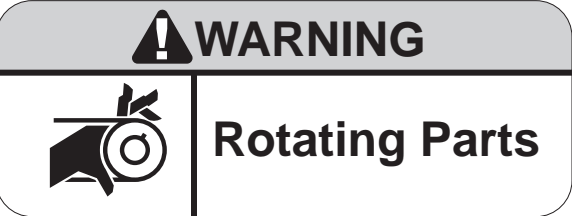
DECAL PLACEMENT



LOCATED ON PASSENGER SIDE OF VEHICLE  
UNDER CARGO BED HANDLE



LOCATED ON DRIVER SIDE OF VEHICLE  
UNDER CARGO BED LATCH HANDLE



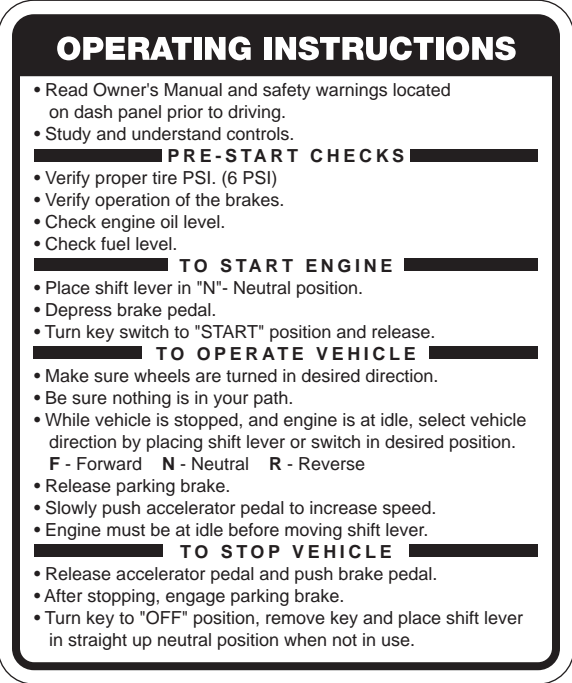
LOCATED ON FRAME  
UNDER CARGO BED



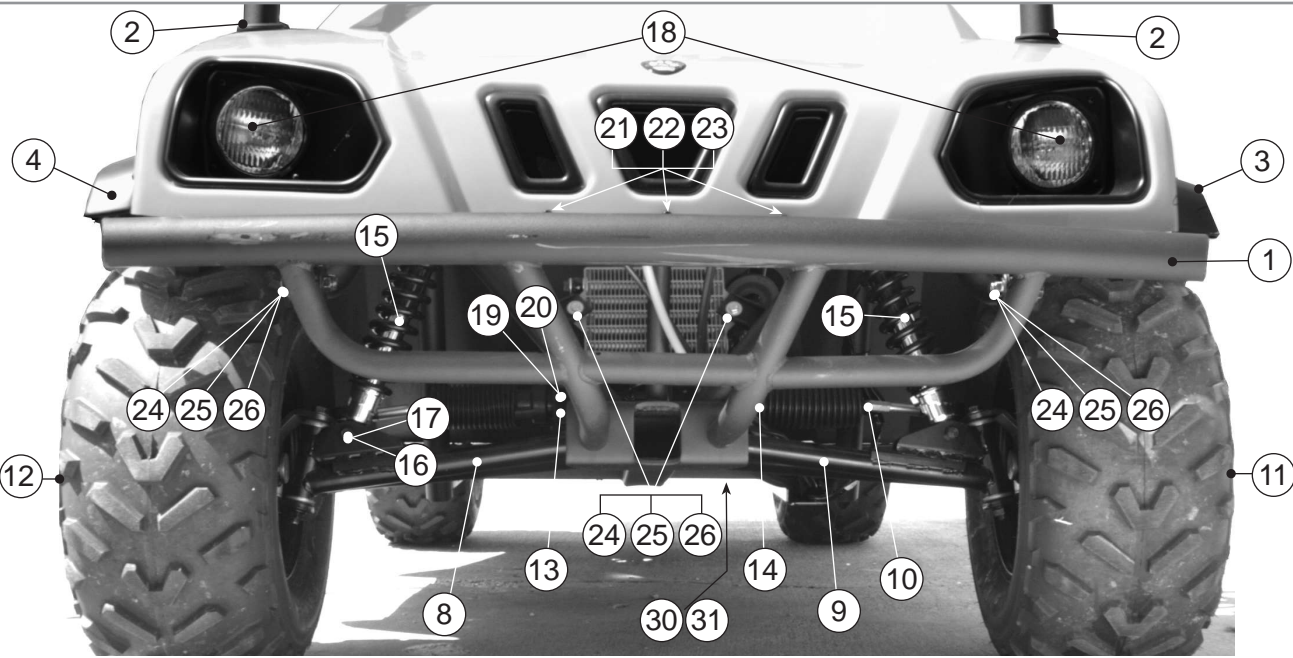
LOCATED ON  
RECEIVER HITCH



LOCATED ON LEFT SIDE OF DASH TO  
THE LEFT OF THE STEERING COLUMN

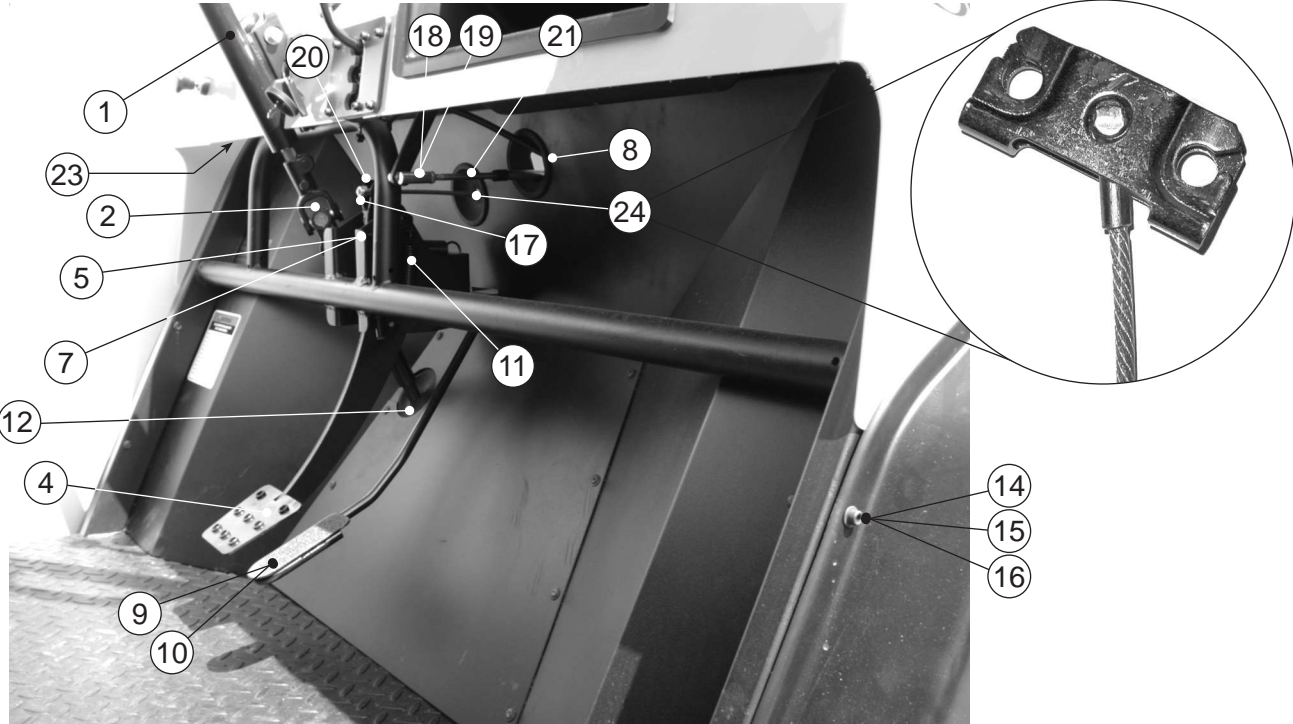


LOCATED ON THE FIREWALL  
THE LEFT OF THE BRAKE PEDAL



| P/N | DESCRIPTION                          | FFA PART # |
|-----|--------------------------------------|------------|
| 1   | ASSY; BUMPER; SILVER; CUV            | 02284      |
| 2   | HOOD GROMMET                         | 05182      |
| 3   | FENDER; FRONT; LEFT; SILVER          | 05405      |
| 4   | FENDER; FRONT; RIGHT; SILVER         | 05406      |
| 8   | SUB ASSY; A ARM RIGHT                | 04652      |
| 9   | SUB ASSY; A ARM LEFT                 | 04130      |
| 10  | RACK AND PINION ASSY; W/HARDWARE     | 04129      |
| 11  | TIRE; 22X9-10; 2-PLY; FRONT LEFT     | 05403      |
| 12  | TIRE; 22X9-10; 2-PLY; FRONT RIGHT    | 05402      |
| 13  | RACK; VIB DAMPER; RIGHT              | 04649      |
| 14  | RACK; VIB DAMPER; LEFT               | 04650      |
| 15  | SHOCK; 800 LB LOAD                   | 04676      |
| 16  | BOLT; 7/16X1-3/4; BLACK ZINC         | 04729      |
| 17  | NUT; LOCK;7/16; BLACK ZINC           | 04730      |
| 18  | ASSY; HEADLIGHT; HOUSING; W / SCREW  | 04402      |
| 19  | CLAMP; VIBRATION DAMPER              | 04651      |
| 20  | BOLT; 3/8X1; BLACK ZINC W / WASHER   | 04727      |
| 32  | NUT; LOCK; 3/8; BLACK ZINC           | 04728      |
| 21  | BOLT; 10-24X3/4; TH; BLACK ZINK; CUV | 04685      |
| 22  | WASHER; FLAT; 3/16; BLACK ZINK; CUV  | 05191      |
| 23  | NUT; NYLOCK; 3/16; BLACK ZINK; CUV   | 04684      |
| 24  | BOLT; 3/8 X 1-1/2; GR5               | 05183      |
| 25  | WASHER; FLAT; 3/8                    | 05186      |
| 26  | NUT; LOCK; 3/8                       | 05187      |
| 27  | BOLT; 1/4-20X3/4; HH; BLACK ZINC     | 05326      |
| 28  | WASHER; FLAT; 1/4; BLACK ZINC        | 05195      |
| 29  | NUT; NYLOCK; 1/4-20; BLACK ZINC      | 04767      |
| 30  | BOLT; 1/2-20X3; GR5; BLACK ZINC      | 04694      |
| 31  | NUT; LOCK; 1/2; CUV                  | 04695      |





| P/N | DESCRIPTION                              | FFA PART # |
|-----|--|------------|
| 1   | ASSY; STEERING COLUMN; W/BOLTS           | 04128      |
| 2   | ASSY; U-JOINT KIT                        | 04648      |
| 4   | PEDAL; BRAKE; KIT; ED BLACK              | 04709      |
| 5   | SPRING; BRAKE                            | 04739      |
| 7   | NUT; NYLOCK; 10MM; BLACK ZINC            | 05632      |
| 9   | PEDAL; THROTTLE; KIT; BLACK              | 04710      |
| 11  | SPRING; THROTTLE                         | 04738      |
| 12  | CROMMET; U-JOINT SHIFTER/THROTTLE        | 04675      |
| 14  | BOLT; 10-24X1-1/2; TH; BLACK ZINK; CUV   | 05192      |
| 15  | WASHER; FLAT; 3/16; BLACK ZINK; CUV      | 05191      |
| 16  | NUT; NYLOCK; 3/16; BLACK ZINK; CUV       | 04684      |
| 17  | BOLT; 10MMX2-1/2; BLACK ZINK; W / WASHER | 05317      |
| 18  | CABLE; END;SHIFT; 1/4-28;CUV             | 05188      |
| 19  | NUT; NYLOCK; 1/4-28; BLACK ZINC          | 05324      |
| 20  | BARREL; BRAKE; LEVER; ZINC               | 05674      |
| 21  | CABLE; SHIFT; 144"; CUV                  | 04741      |
| 23  | WIRE HARNESS; FRONT (UNDER DASH PANEL)   | 04670      |
| 24  | CABLE; SPLITTER (IN FRONT OF FIREWALL)   | 04665      |



### ! WARNING

**YOUNG DRIVERS INCREASE CHANCE OF DEATH**

- Young drivers may not be able to control vehicle.
- No drivers younger than 16 years old.

### VEHICLE LOADING

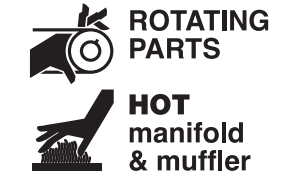
Read Owner's Manual and warnings on dash.

- Vehicle rated capacity - 765 lbs. on level surface only. Weight to include passengers, cargo bed load, and gross trailer weight. See Owner's Manual.
- Maximum cargo load - 365 lbs. Weight to include cargo bed load and gross trailer weight.
- Maximum trailer hitch tongue weight - 125 lbs.
- Cargo should be evenly spread over the floor of the cargo bed as far forward as possible and secured.
- For vehicle stability, when fully loaded, drive slowly and avoid stopping on or backing down steep hills.
- Avoid top heavy loads. See Owner's Manual.
- When driving on uneven terrain or down steep hills, reduce speed and load.

LOCATED ON DASH  
TO THE LEFT OF THE STEERING COLUMN

### ! WARNING

CAN CAUSE SEVERE INJURY  
KEEP CLEAR



LOCATED ON FRAME  
UNDER CARGO BED

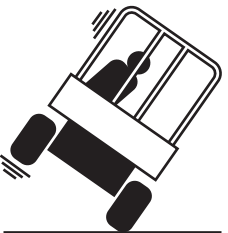


### ! WARNING

INCORRECT WIRING COULD RESULT IN  
SEVERE INJURY OR DEATH

Do not tamper with  
wiring of this unit.

LOCATED ON FRAME UNDER CARGO BED



### ! WARNING

Excessive speed can  
cause severe injury or  
death. Do not tamper  
with engine governor  
adjustment.



### ! WARNING

- GASOLINE EXPLOSION / FIRE.
- CAN CAUSE SEVERE INJURY OR DEATH.
- NO SMOKING, SPARKS, OR OPEN FLAME.
- STOP ENGINE, ALLOW TO COOL BEFORE REFUELING.
- DO NOT FILL TANK ABOVE THE BOTTOM EDGE OF THE SIDE FILL ACCESS

LOCATED ON FUEL TANK



### ! WARNING

Negative frame ground. Can cause severe injury.  
Do not contact positive (+) battery post or cable  
to frame. Disconnect negative battery lead first.

LOCATED ON DRIVER SIDE OF VEHICLE  
UNDER PARK BRAKE LEVER

MODEL IDENTIFICATION

The **SCOUT vehicle Serial Number** is mounted on the fire wall beneath the light switch.  
The **Engine Serial Number** located on the left side of the engine crankcase.

The **SCOUT vehicle Serial Number** and **Engine Serial Number** are important for model identification when registering your vehicle, obtaining insurance or whenever replacement parts are required. If your vehicle is stolen these numbers are essential to the recovery and identification of your SCOUT vehicle.

NOTE: Have the vehicle serial number available when ordering parts or making inquiries.  
Record these numbers from your CUV in the spaces provided below.

SCOUT vehicle  
Serial Number

ENGINE  
Serial Number

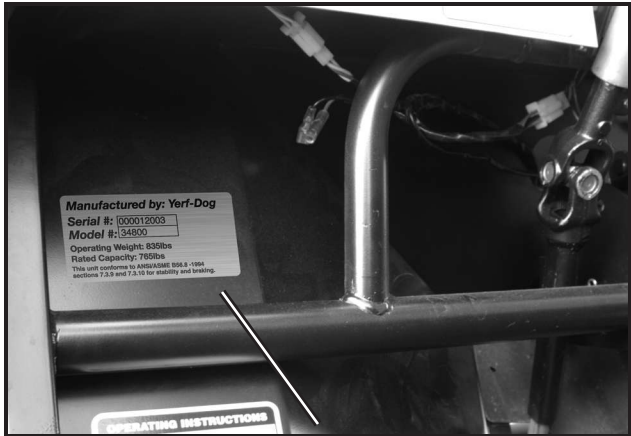


Figure 1 SCOUT vehicle Serial Number



Figure 2 Engine Serial Number

GENERAL INFORMATION

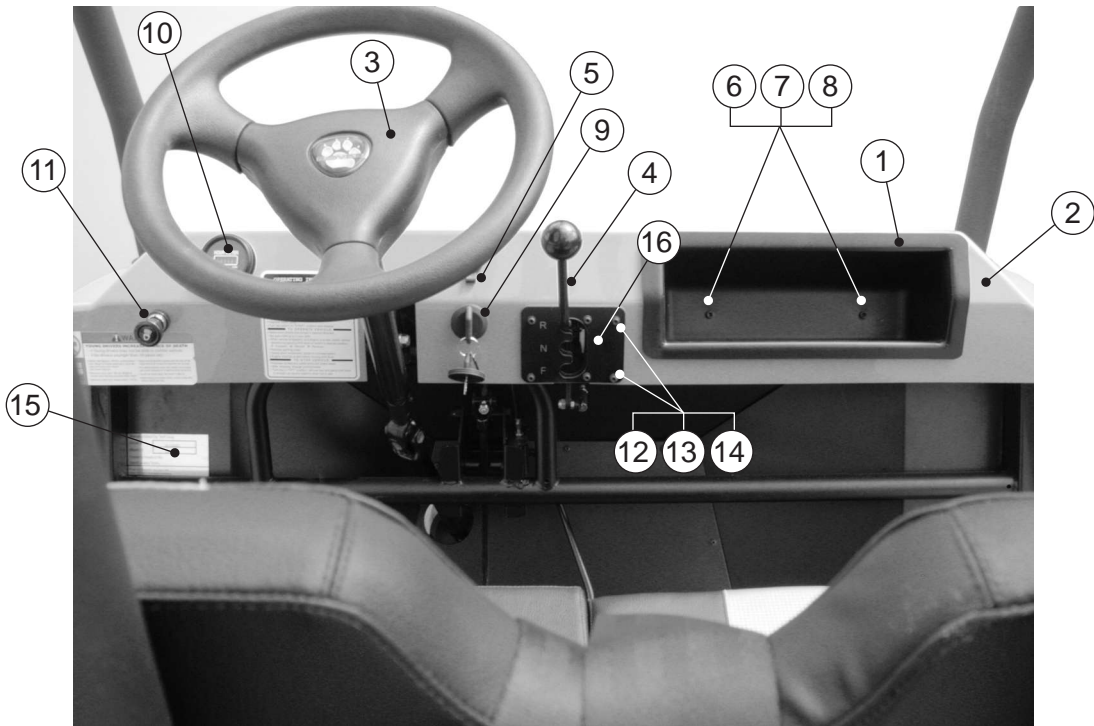
We urge the owner / operators to read and understand this manual. We expect this vehicle to last for years to come, by reading and following the operation, service and maintenance procedures outlined in this owners manual.

CONTROLS AND INDICATORS

Read **DANGER** and **WARNING** on page 7.

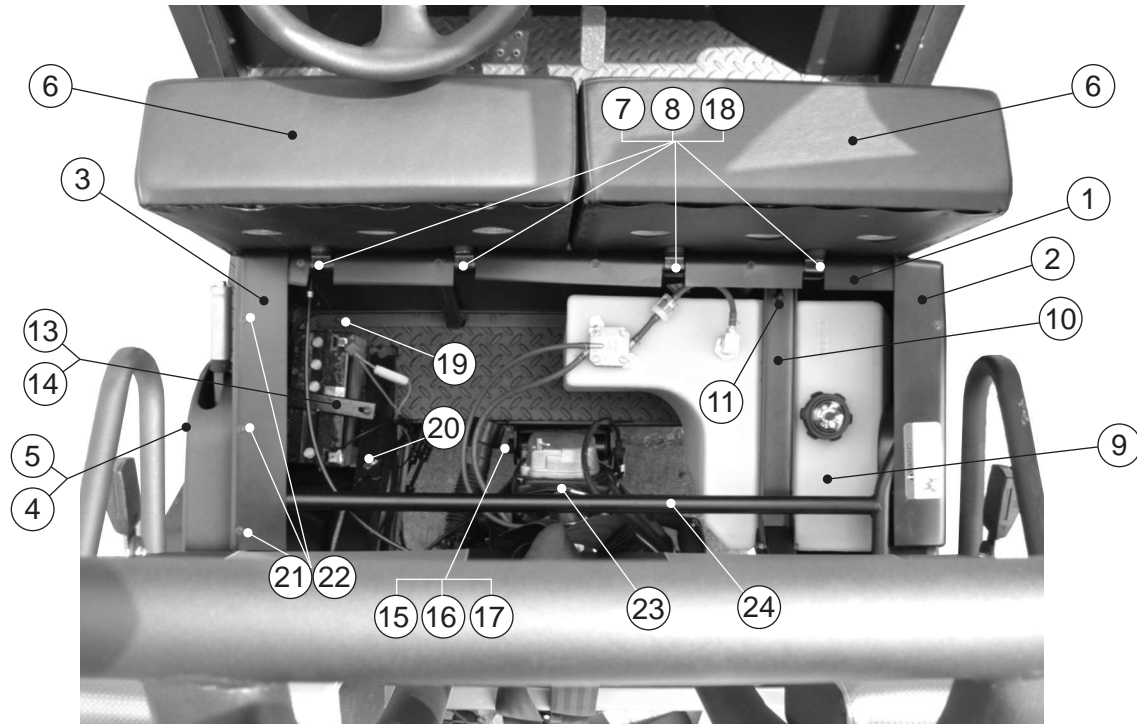
⚠ WARNING

- Before allowing anyone to drive the vehicle, make sure the driver is familiar with all controls, safety and operating procedures.
- Do not tamper with the governor. Doing so will void the warranty, as well as damage the engine and other components, and could result in property damage, personal injury, or death due to unsafe speeds.
- Any modification or change to the vehicle that affects the stability or handling of the vehicle, or increases maximum vehicle speed beyond factory specifications, could result in severe personal injury or death and voids the warranty.



| P/N | DESCRIPTION                          | FFA PART # |
|-----|--------------------------------------|------------|
| 1   | ASSY; GLOVEBOX                       | 04133      |
| 2   | ASSY; HOOD; RED; CUV                 | 05407      |
| 3   | STEERING WHEEL; W/COVER              | 04678      |
| 4   | SHIFTER ASSY                         | 04669      |
| 5   | POWER PORT                           | 04768      |
| 6   | BOLT; 10-24X3/4; TH; BLACK ZINK; CUV | 04685      |
| 7   | WASHER; FLAT; 3/16; BLACK ZINK; CUV  | 05191      |
| 8   | NUT; NYLOCK; 3/16; BLACK ZINK; CUV   | 04684      |
| 9   | KEY SWITCH; CUV                      | 04770      |
| 10  | HOUR METER; CUV                      | 04771      |
| 11  | HEADLIGHT SWITCH; CUV                | 04769      |
| 12  | BOLT; 4MM X 16MM; CUV                | 05199      |
| 13  | WASHER; FLAT; 4MM; CUV               | 05200      |
| 14  | NUT; NYLOCK; 4MM; CUV                | 05201      |
| 15  | LABEL; SERIAL; 4X2; FRAME; CUV       | 05189      |
| 16  | SHIFTER MOUNT FACE PLATE; CUV        | 05310      |





| P/N | DESCRIPTION                        | FFA PART # |
|-----|------------------------------------|------------|
| 1   | PANEL; FRONT                       | 04135      |
| 2   | PANEL; RIGHT SIDE                  | 04134      |
| 3   | PANEL; INNER LEFT SIDE             | 04136      |
| 4   | SIDE PANEL SPACER                  | 04734      |
| 5   | SCREW; TH; 1/2-20X1/2; BLACK ZINC  | 05325      |
| 6   | ASSY; SEAT; CUSHION                | 04139      |
| 7   | BOLT; 1/8X5/8                      | 05320      |
| 8   | SPACER; RUBBER; SEAT               | 04698      |
| 9   | FUEL TANK ASSY                     | 04141      |
| 10  | CLAMP BAR; FUEL TANK KIT; BLACK    | 04142      |
| 11  | BOLT; 1/4-20X1/2; BLACK ZINC       | 05197      |
| 13  | BATTERY MOUNT BRACKET              | 04704      |
| 14  | BOLT; 1/4-20X1; BLACK OXIDE        | 04682      |
| 15  | BOLT; 5/8X7-1/2; GR5; SWINGARM     | 04672      |
| 16  | WASHER;FLAT;5/8;NARROW;BLACK OXIDE | H56251W    |
| 17  | NUT;NYLOCK;5/8                     | 04673      |
| 18  | CLAMP;1"ID; ED BLACK               | 04699      |
| 19  | BOLT; 1/4X1-1/4                    | 04766      |
| 20  | SCREW; 1/8X3/16; GROUND            | 05313      |
| 21  | RIVET; 1/8X1/2; BLACK OXIDE; CUV   | 05193      |
| 22  | WASHER; FLAT; 1/8; BLACK OXIDE     | 05194      |
| 23  | CABLE THROTTLE; CUV                | 04144      |
| 24  | ASSY; SEAT FRAME; BLACK            | 04662      |

- Stop the vehicle before shifting the Transmission Gear Shift Lever. Engine must be at idle before shifting the Forward/Reverse handle. Failure to do so may result in injury to passengers and (or) damage to the vehicle and will void the warranty.
- Release the accelerator pedal and then depress the brake pedal firmly until the vehicle stops. To avoid unintentional starting or rolling the vehicle, set the park brake (see page 13), turn the key switch to OFF, and remove the key when leaving the vehicle.

### KEY SWITCH

The key switch is mounted on the dash to the right of the steering column (**Figure 3**). To start the vehicle, place the Transmission Gear Shift Lever in the NEUTRAL position and turn the key clockwise and hold until the engine is running smoothly. Release the key and the engine should idle. The engine will continue to idle until the key is turned counterclockwise.

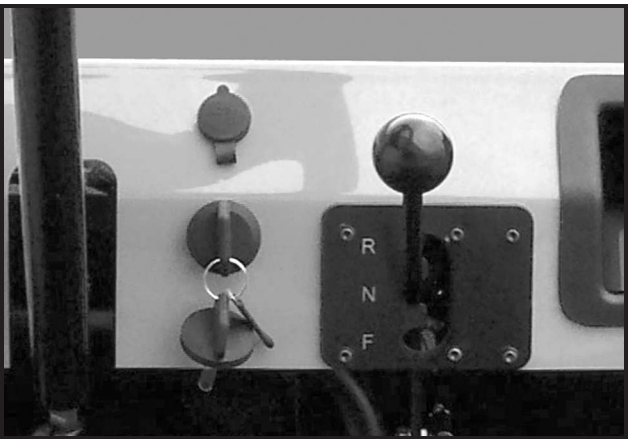


Figure 3 Key Switch / Accessory Outlet / Transmission Gear Shift Lever

NOTE: The key can be removed only when the engine is not running.

### 12 VOLT ACCESSORY OUTLET

A 12 volt accessory outlet is located on the dash for your convenience.

### TRANSMISSION GEAR SHIFT LEVER

The Transmission Gear Shift Lever is located on the dash (**Figure 3**). The lever has three distinct positions: **F** (FORWARD), **N** (NEUTRAL), and **R** (REVERSE). Pull handle downward (F) to operate the vehicle in the forward direction, or upward (R) to operate the vehicle in reverse. The engine must be at idle before shifting the Transmission Gear Shift Lever. **See WARNING and CAUTION below.**

Note: This vehicle operates at a reduced speed in reverse.

#### ⚠ WARNING

- Moving parts! Keep clear of the engine compartment while the engine is running.

#### ⚠ CAUTION

- Do not shift the Forward/Reverse handle while the accelerator pedal is pressed. Shift the handle only when the vehicle is at a complete stop. Failure to heed this caution could result in damage to the transmission.

ACCELERATOR PEDAL

The accelerator pedal is the pedal on the right (Figure 4).

With the engine running and the Forward/Reverse handle in the FORWARD or REVERSE position, vehicle speed will increase as the accelerator pedal is depressed. When the accelerator pedal is released, it will return to the original position and the engine will idle. See WARNING and CAUTION on page 11.

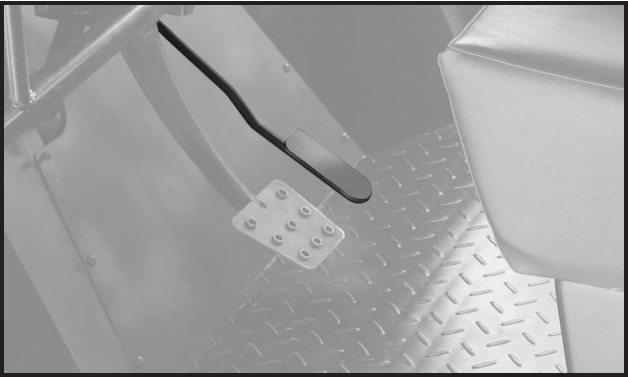


Figure 4 Accelerator Pedal

WARNING

- Do not start or operate a SCOUT vehicle with a sticky or improperly operating throttle. A sticky or improperly operating throttle could cause an accident resulting in severe injury or death.
- Always contact your Service Center for service repairs whenever throttle problems arise.
- Failure to check or maintain proper operation of the throttle system can result in the throttle sticking during driving and cause an accident.
- Always check the accelerator pedal for free movement and return before starting the engine. Check occasionally during driving.
- The normal free play of the accelerator pedal is 1/8 ~ 3/8 inch (5 mm ~ 10 mm). To measure free play, measure the rotation of the accelerator pedal from rest position to the position the throttle is affected.
- To adjust free play, loosen the nut on the barrel adjuster located above the accelerator pedal and adjust to the proper position.

BRAKE PEDAL

The brake pedal is the large pedal on the left. To slow or stop the vehicle, depress the brake pedal (Figure 5).

Brake adjustment

- The pedal free play should fall between 3/8" ~ 3/4 in. (10 ~ 20 mm). Check the free play by measuring the travel of the brake pedal from the rest position to the position when you first feel tension on the cables.
- If there is more than 3/4" free play, use a 3/8" socket to tighten the nut on the brake pedal lever arm (Figure 5b).
- If the free play is excessive, have it repaired by your service center.

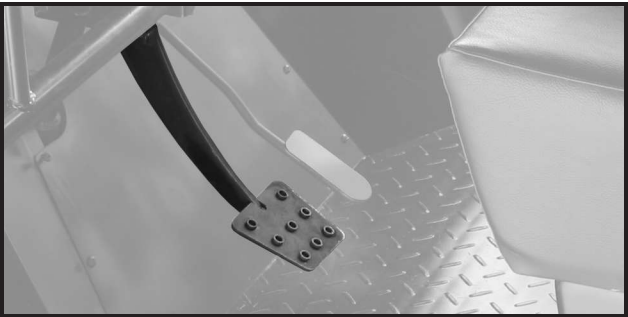


Figure 5 Brake Pedal

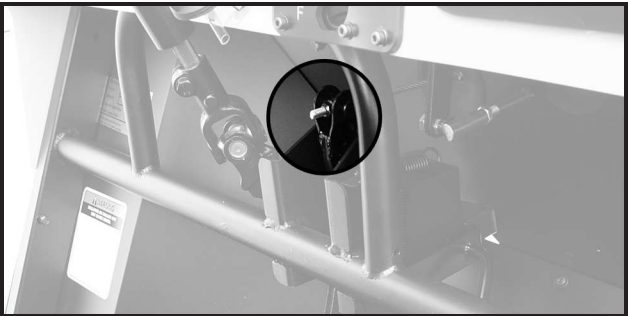


Figure 5b Brake Pedal

| P/N | DESCRIPTION                              | FFA PART # |
|-----|--|------------|
| 23  | HEAD REST (2 IN BOX)                     | 05167      |
| 24  | TIRE; 22X11-8; 2-PLY; LEFT REAR SILVER   | 05400      |
| 25  | NUT; LUG; M14; ZINC                      | 04668      |
| 26  | TIRE; 22X11-8; 2-PLY; RIGHT REAR SILVER  | 05401      |
| 27  | FENDER; REAR; LEFT/RIGHT SILVER;CUV      | 05404      |
| 28  | REAR FENDER BRACKET KIT                  | 04711      |
| 29  | DECALS                                   | 05802      |
| 30  | SEAT BELTS                               | 04679      |
| 31  | COMPLETE ASSY; DUMP BED RED W / HARDWARE | 05408      |
| 32  | CABLE TRAY ED BLACK; CUV                 | 04705      |
| 33  | 4 x 2 Decal                              | 02286      |

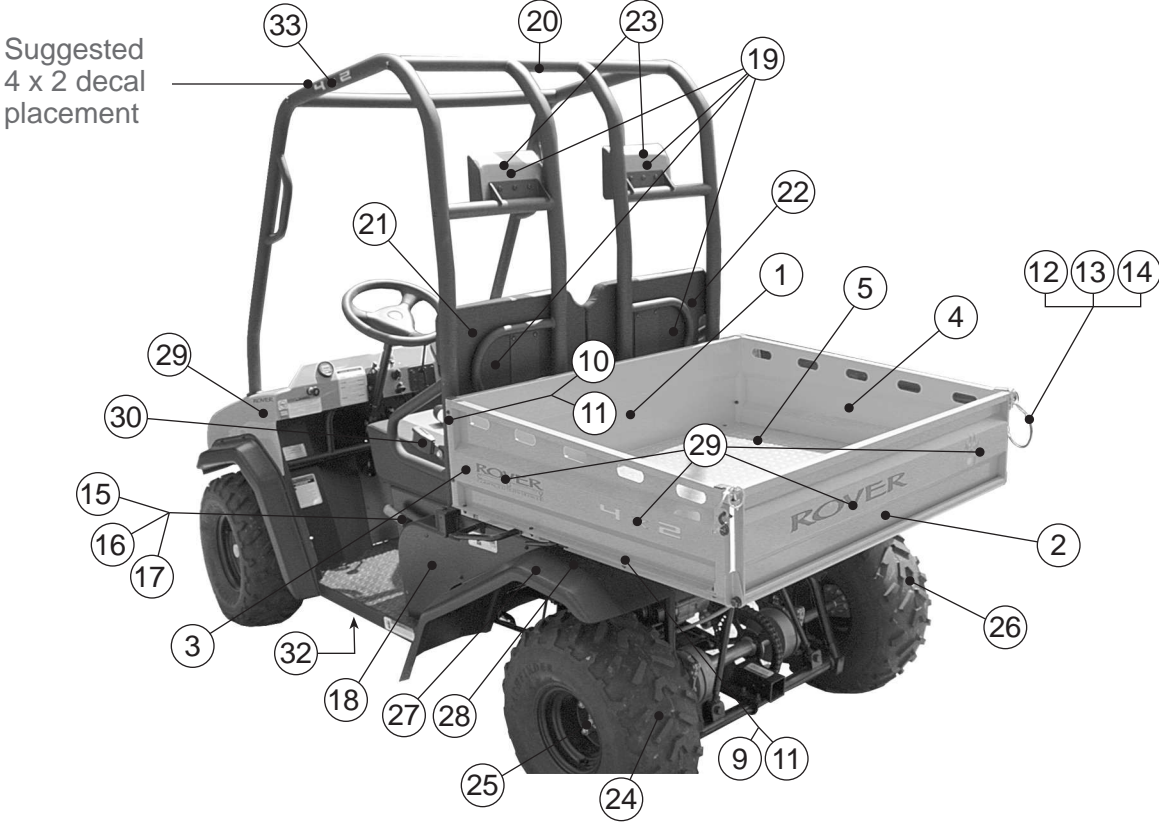
ACCESSORY PARTS

| P/N | DESCRIPTION                  | FFA PART # |
|-----|------------------------------|------------|
| 1   | WELDMENT;PUSH GUARD; BLACK   | 06074      |
| 2   | COMPLETE ASSY; WINDSHIELD    | 06274      |
| 3   | COMPLETE ASSY; CANOPY; VINYL | 06090      |

MISCELLANEOUS PARTS

| P/N | DESCRIPTION                                    | FFA PART # |
|-----|--|------------|
| 1   | TIE; CABLE; BAR-LOK 11; BLACK                  | M12501W    |
| 2   | TIE; CABLE; 0.35X23                            | M13501W    |
| 3   | ASSY; OWNERS PACKET; CUV                       | 06267      |
| 4   | WARNING DECALS (SEE PAGE 8 & 9 OF THIS MANUAL) | 04680      |
| 5   | BUMPER; RECESSED; VIBRATION DAMPENER; RUBBER   | 06172      |
| 6   | SCREW; #10-16 X 1-1/2"; HEX HEAD               | 06177      |
| 7   | BATTERY; CUV                                   | 04677      |





| P/N | DESCRIPTION                          | FFA PART # |
|-----|--------------------------------------|------------|
| 1   | BED SIDE FRONT WELDMENT RED          | 04123      |
| 2   | BED TAILGATE WELDMENT RED            | 04118      |
| 3   | BED SIDE LEFT WELDMENT RED           | 04122      |
| 4   | BED SIDE RIGHT WELDMENT RED          | 04124      |
| 5   | BED FRAME WELDMENT RED               | 04125      |
| 9   | BOLT; 1/4X3/4; GR5                   | 05176      |
| 10  | BOLT; 1/4X1-1/2; GR5                 | 05177      |
| 11  | NUT; LOCK; 1/4                       | 05178      |
| 12  | CABLES                               | 05179      |
| 13  | S HOOKS                              | 05180      |
| 14  | LATCH PINS                           | 05181      |
| 15  | LEVER; PARK BRAKE; ED BLACK          | 04659      |
| 16  | BOLT; 5/16X1 PARK BRAKE W / WASHER   | 04691      |
| 17  | NUT; LOCK; 5/16 PARK BRAKE           | 04692      |
| 18  | PANEL LEFT OUTER SIDE                | 04137      |
| 19  | SEAT; BACK/HEADREST                  | 04661      |
| 20  | ASSY; BRUSHGUARD; SILVER W/ HARDWARE | 05414      |
| 21  | SEAT BACK LEFT                       | 05165      |
| 22  | SEAT BACK RIGHT                      | 05166      |

CONTINUED >

PARKING BRAKE LEVER

The parking brake lever is located on the operator's left hand side (Figure 6). Engage this lever each time use is halted by pulling upward. Release lever by depressing button on end and fully lower lever.

WARNING

- Disengage lever when use is continued. Failure to disengage this lever will result in damage to the braking system, and could result in severe personal injury or death.



Figure 6 Parking Brake

CHOKE

The choke is located on the seat support panel below and to the left of the driver's left knee (Figure 7).

If the vehicle is hard to start in cool or cold temperatures, activate choke: depress the accelerator pedal halfway to the floor, then pull the choke handle out to activate. NOTE: This is a short pull choke. Take extra precaution not to over pull choke.

Push choke handle back into panel when the engine begins to run smoothly.

Failure to disengage the choke will prematurely wear engine parts and significantly decrease engine performance.



Figure 7 Choke

HOUR METER

The SCOUT vehicle is equipped with an hour meter, located on the dash panel to the left of the steering column (Figure 8). The hour meter should be used by the trained technician in order to track vehicle usage and determine when periodic service procedures are required. See Periodic Service Schedule on page 24.

HEADLIGHT CONTROL

The headlight control is located on the dash panel to the left of the steering column (Figure 8). Pull the headlight control knob out to turn headlights on and push the knob in to turn headlights off. We recommend headlights be in the off position when engine is not running.

NOTE: Using the headlights for extended periods of time without the engine running, or with the engine idling, will discharge the battery.



Figure 8 Hour Meter / Headlight Control

PRE-OPERATION AND DAILY SAFETY CHECKLIST

KNOW YOUR MACHINE

**Owners:** Review the information in this manual with any person who may be operating this SCOUT vehicle. It is up to you to instruct other riders in the proper and safe way to operate a SCOUT vehicle. Set boundaries and adhere to them, keeping everyone’s safety foremost in your mind. **Never** allow anyone under 16 (including **any** children) to operate this SCOUT vehicle.

**Drivers:** Before you drive this vehicle, you should know how it operates and most importantly, how to operate it safely. **YOUR SAFETY AND THE SAFETY OF OTHERS AROUND YOU ARE THE MOST IMPORTANT THINGS TO REMEMBER WHEN OPERATING THIS VEHICLE.** That’s why you should read and be sure you understand all the warnings and instructions in this manual and in the decals on the vehicle itself before operating it.

Pay attention when you see this symbol:

CAUTION

A CAUTION indicates a hazard or unsafe practice that could result in minor personal injury or product or property damage.

Each SCOUT vehicle is thoroughly inspected and adjusted at the factory; however, upon receiving your new vehicle(s), you should become familiar with its controls, indicators, and operation (see **Controls and Indicators on page 10**). Carefully inspect the vehicle to ensure that it is in proper working condition before use.

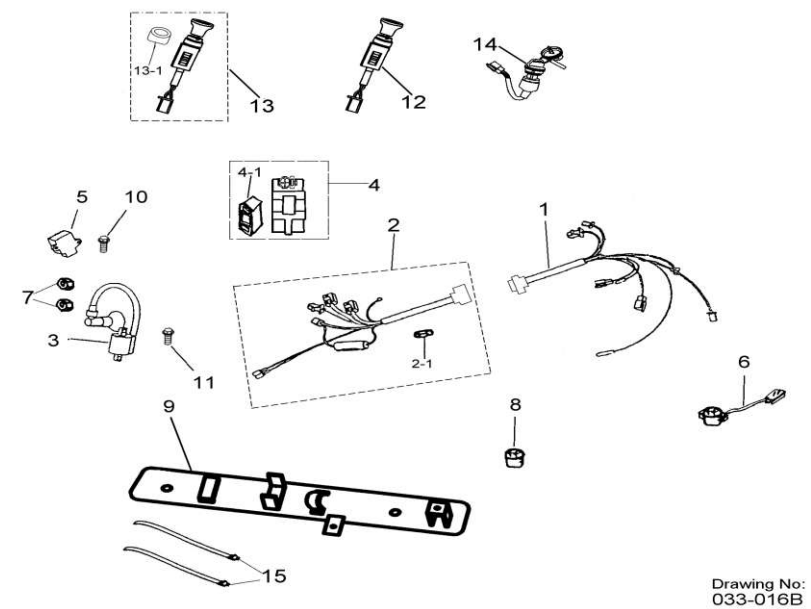
Use the following checklist as a guide to inspect your new vehicle. This checklist should be used daily to ensure vehicle is in proper working condition and in conjunction with the Periodic Service Schedule on page 24. Any problems should be corrected by a trained technician because failure could result in severe personal injury or death.

- **General:** All the parts should be in place and properly installed. Be sure that all nuts, bolts and screws are tight. Check all hose clamps for tight fit.
- **Safety and information decals:** Check to ensure that all safety and information decals are in place. See pages 8 and 9.
- **Tires:** Check for proper tire pressure. See **Vehicle Specifications on page 38**. Visually inspect tires for wear, damage, and proper inflation on a daily basis.
- **Battery:** Before using vehicle for the first time, check electrolyte level to ensure it is at the proper level. Check battery posts. Wires should be tight and free of corrosion and battery should be fully charged.
- **Engine:** Check for proper engine oil level. See (Figure 11) on page 26.
- **Fuel:** Check fuel level. See **Fueling Instructions on page 28**. Check fuel tank, lines, cap, pump, fuel filters, and carburetor for fuel leakage on a daily basis.
- **Exhaust system:** Check for leaks.

WARNING

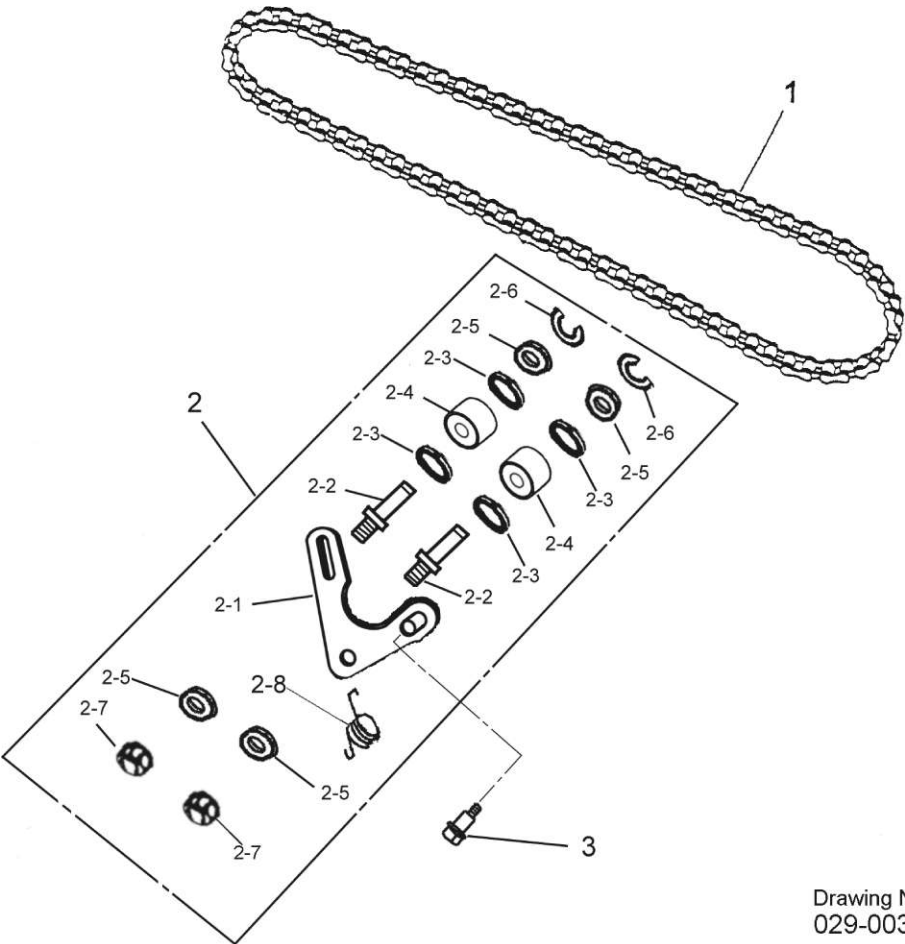
- **Be sure the plastic has been removed from the seat bottom before operating the vehicle.** Failure to do so may result in a fire, property damage, personal injury or death.

D-21 ELECTRICAL PARTS



| P/N     | DESCRIPTION                | FFA PART # |
|---------|----------------------------|------------|
| 21-1    | MAIN WIRE (COWL)           | 05137      |
| 21-2    | MAIN WIRE (ENGINE)         | 05138      |
| 21-2-1  | FUSE                       | 05139      |
| 21-3    | IGNITION COIL ASS'Y        | 05140      |
| 21-4    | C.D.I. UNIT ASS'Y          | 05141      |
| 21-4-1  | FIX RUBBER                 | 05142      |
| 21-5    | RECTIFIER & REGULATOR      | 05143      |
| 21-6    | STARTER RELAY ASSY.        | 05144      |
| 21-7    | HEX FLANGE NUT SERPATION   | 05145      |
| 21-8    | HOUR METER                 | 04771      |
| 21-9    | ELECTRICAL PARTS FIX PLATE | 05147      |
| 21-10   | HEX FLANGE BOLT            | 05148      |
| 21-11   | HEX FLANGE BOLT            | 05149      |
| 21-12   | HEAD LIGHT SWITCH          | 04769      |
| 21-13   | POWER PORT                 | 04768      |
| 21-13-1 | RUBBER WASHER              | 05152      |
| 21-14   | MAIN KEY SWITCH ASS'Y      | 04770      |
| 21-15   | STRAP                      | 05154      |

D-19 CHAIN



Drawing No:  
029-003B

| P/N    | DESCRIPTION              | FFA PART # |
|--------|--------------------------|------------|
| 19-1   | PRIVE CHAIN ASS'Y        | 05100      |
| 19-2   | CHAIN TENSIONER ASS'Y    | 05101      |
| 19-2-1 | CHAIN TENSIONER BRACKET  | 05102      |
| 19-2-2 | PLASTIC ROLLER FIX SHAFT | 05103      |
| 19-2-3 | NEEDLE BEARING           | 05104      |
| 19-2-4 | PLASTIC ROLLER           | 05105      |
| 19-2-5 | PLAIN WASHER             | 05098      |
| 19-2-6 | E RING                   | 05106      |
| 19-2-7 | NYLON INSERT LOCK NUT    | 05107      |
| 19-2-8 | SPRING                   | 05108      |
| 19-3   | HEX FLANGE BOLT          | 05109      |

PERFORMANCE INSPECTION

After you have familiarized yourself with the vehicle controls and have read and understood the driving instructions, take the vehicle for a test drive.

Use the following checklist as a guide to inspect the vehicle and check daily for proper operation. Any problems should be corrected by your SCOUT vehicle Retailer/Service Center or a trained technician.

- **Transmission Gear Shift Lever:** Check for proper operation. **See Transmission Gear Shift Lever on page 11.**
- **Brakes:** Be sure the brakes function properly. When brake pedal is fully depressed under moderate pressure, it should not contact the firewall, and vehicle should come to a smooth, straight stop. If the brake pedal goes more than halfway to the floor or if the vehicle swerves or fails to stop, have the brake system checked and adjusted as required. Brake adjustment must be maintained so the brake pedal cannot be depressed to the floor under any circumstance.
- **Parking brake:** When engaged, the parking brake should lock the wheels and hold the vehicle stationary (on an incline of 20% or less). To prevent rollover, the vehicle should **never** be operated or left on an incline greater than 20%. The parking brake should be used (engaged) each time the vehicle is parked and disengaged prior to moving.
- **Steering:** The vehicle should be easy to steer and should not have any play in the steering wheel.
- **Accelerator:** After starting the engine with the key switch and placing the Forward/Reverse handle in FORWARD, the vehicle should accelerate smoothly to full speed as the accelerator pedal is depressed. When the pedal is released it should return to the original position and the engine should idle. This vehicle operates at reduced speed in REVERSE.
- **Governor:** Check maximum speed of the vehicle. It should operate at 17-23 m.p.h. (27-37 km/h) on a level surface. To prevent rollover and other hazards, the vehicle should never be operated in excess of 23 m.p.h..
- **General:** Listen for any unusual noises such as squeaks or rattles. Check the vehicle's ride and performance. Have a trained technician investigate anything unusual.

DRIVING AND OPERATING INSTRUCTIONS

THIS VEHICLE IS DESIGNED AND MANUFACTURED FOR OFF-ROAD USE ONLY.

⚠ WARNING

- Only drivers with valid drivers license should be allowed to drive the vehicle.
- Before allowing anyone to drive the vehicle, make sure the driver understands all the warnings and instructions in this manual and in the decals on the vehicle itself.
- No one under the age of 16 years should be allowed to drive the vehicle.
- No more than 2 people should be on the vehicle at one time.
- Do not allow riders in the cargo bed.
- Always fasten seat belts while operating the vehicle.
- For night use, this vehicle is equipped with headlights.
- The vehicle is not specially equipped for handicapped persons.
- Be sure all persons can properly operate the vehicle prior to allowing them to drive the vehicle.
- Be sure all passengers are capable of securing themselves in a vehicle before allowing them to ride in one.



- Stop the vehicle before shifting the Transmission Gear Shift Lever. The engine must be at idle before shifting Forward / Reverse. Failure to do so may result in injury to inattentive passengers and (or) damage to the vehicle.
  - To avoid being struck, never stand or allow anyone to stand in front of or behind the vehicle.
  - Never leave children unattended on the vehicle.
  - Operate the vehicle from the driver seat only.
  - To help prevent falls from the vehicle, remain seated and hold on to seat handles at all times. Driver should keep both hands on the steering wheel when the vehicle is in motion.
  - To help prevent the possibility of serious injury, keep entire body inside the vehicle.
  - To help prevent overturning the vehicle, drive slowly in turns.
  - To help prevent overturning the vehicle, drive slowly straight up and down slopes. Avoid driving the vehicle on slopes exceeding 20% incline.
  - Avoid stopping on a hill with a loaded cargo bed. If a loaded vehicle must be stopped on a hill, avoid sudden starts or rolling backwards and stopping suddenly. Failure to heed this warning could result in overturning the vehicle.
  - To avoid injury to any passenger or damage to the vehicle, avoid sudden starts, sudden stops, and abrupt turns.
  - To avoid losing control or overturning the vehicle, reduce speed for adverse driving conditions such as wet grass or rough terrain.
  - Do not operate the vehicle on public streets, roads or highways. It is neither designed nor intended for any public roadway.
  - This vehicle should only be driven off-road in areas with slopes of less than 20° and by licensed drivers who are at least 16 years old and who have read and understand the warnings and instructions in this manual and on the vehicle itself..
  - Do not drive while under the influence of alcohol, drugs, or medications.
  - Use brakes to reduce speed when coasting downhill.
  - Never attempt jumps.
  - Wet brakes have reduced stopping ability. Test your brakes after leaving water. If necessary, apply them several times to let friction dry out the pads.
  - Always use size and type tires specified in this manual. Always maintain proper tire pressure as described in this manual.
  - Never exceed the stated load capacity for a CUV. Cargo should be properly distributed and securely attached. Reduce speed and follow instructions outlined in this manual. Allow greater distance for braking.
- DRIVE SAFELY & RESPONSIBLY!**

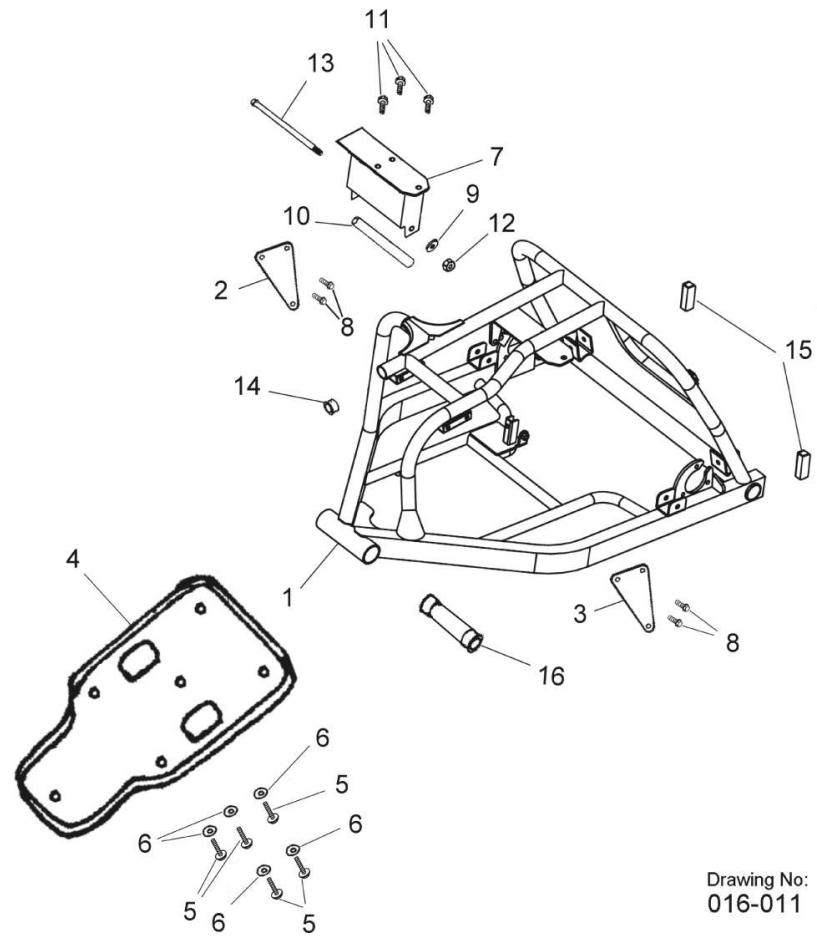
**Additional Important Information. . .**

It is strongly recommended that owners not install any non-Original Equipment Manufacturer (OEM) supplied equipment on a Yerf-Dog SCOUT in order to increase its speed or power. Do not make any modification to the Yerf-Dog SCOUT for that purpose. Any modification of the vehicle's original equipment may substantially increase the risk of serious injury or death. **Because any such modifications may create a substantial safety hazard, you are therefore advised that the warranty on your Yerf-Dog SCOUT is terminated if any non-OEM equipment is added or any modifications are made to the vehicle to increase its speed or power.**

You are also advised to follow strictly the recommended maintenance program described in this manual. The preventive maintenance program is designed to insure that all critical components of the Yerf-Dog SCOUT are inspected by your Service Center on a regular schedule (hourly intervals). Contact Yerf-Dog Customer Service for a service center near you at 1-888-926-6554

You are also advised that the addition of certain accessories to the Yerf-Dog SCOUT may change its handling characteristics. Any accessories must be approved by your local Service Center **before** being added to your Yerf-Dog SCOUT.

**D-16 FRAME BODY**

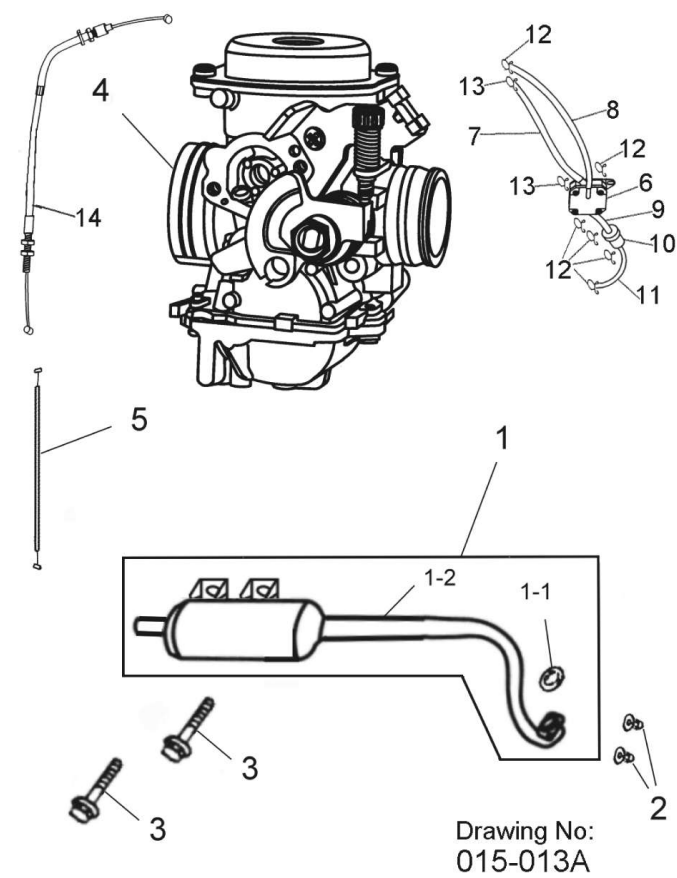


Drawing No:  
016-011

| P/N   | DESCRIPTION                   | FFA PART # |
|-------|-------------------------------|------------|
| 16-1  | FRAME COMP                    | 05049      |
| 16-2  | RIGHT ENGINE BRACKET PLATE    | 05050      |
| 16-3  | LEFT ENGINE BRACKET PLATE     | 05051      |
| 16-4  | PROTECTION FRAME BOTTOM BOARD | 05052      |
| 16-5  | PAN PHILLIPS BOLT             | 05053      |
| 16-6  | SPRING WASHER                 | 05054      |
| 16-7  | REAR ENGINE BRACKET PLATE     | 05055      |
| 16-8  | HEX WASHER FACE BOLT          | 05056      |
| 16-9  | PLAIN WASHER                  | 04967      |
| 16-10 | SPACER TUBE                   | 05058      |
| 16-11 | HEX WASHER FACE BOLT          | 05059      |
| 16-12 | NYLON INSERT LOCK NUT         | 05060      |
| 16-13 | HEX WASHER FACE BOLT          | 05061      |
| 16-14 | RUBBER CAP                    | 04791      |
| 16-15 | RUBBER CAP                    | 05063      |



D-15 EXHANST MUFFLER, CARBURETOR, FUEL PUMP



| P/N    | DESCRIPTION         | FFA PART # |
|--------|---------------------|------------|
| 15-1   | EXHAUST PIPE ASS'Y  | 05033      |
| 15-1-1 | EXHAUST PIPE GASKET | 05034      |
| 15-1-2 | EXHAUST PIPE        | 05035      |
| 15-2   | NUT CAP             | 05036      |
| 15-3   | HEX FLANGE BOLT     | 05037      |
| 15-4   | CARBURETOR ASS'Y    | 05038      |
| 15-5   | CHOKE WIRE          | 05039      |
| 15-6   | FUEL PUMP COMP      | 05040      |
| 15-7   | SIDE OIL TUBE       | 05041      |
| 15-8   | FUEL TUBE B         | 05042      |
| 15-9   | FUEL TUBE C         | 05043      |
| 15-10  | FUEL FILTER ASSY    | 05044      |
| 15-11  | FUEL TUBE D         | 05045      |
| 15-12  | CLIP                | 05030      |
| 15-13  | CLIP                | 05047      |
| 15-14  | THROTTLE CABLE      | 05048      |

SCOUT VEHICLE BREAK-IN PERIOD

The break-in period for your SCOUT vehicle is the time it takes for the vehicle to use up the first full tank of gasoline. This break-in period is vital to the efficiency, performance and long engine life.

CAUTION

Do not operate at full throttle or high speeds for extended periods during the first 3 hours of driving. Excessive heat can build up and cause damage to close-fitted engine parts.

1. Drive slowly at first. Operate in an open area to familiarize yourself with the SCOUT vehicle's operation and handling.
2. Vary the throttle position by changing the pressure on the accelerator pedal.
3. Perform regular checks on fluid levels, controls, and all important areas on the vehicle as outlined on the pre-ride checklist.

No one should drive the vehicle without first being instructed in the proper operation and use of vehicle controls. An experienced operator should accompany each first-time driver on a test drive before allowing the driver to operate the vehicle alone.

To ensure safe operation of the vehicle, follow exactly and in order, all of the following procedures. Read and understand all instructions prior to driving the vehicle.

STARTING THE VEHICLE

1. Read warning and loading decals on dash and firewall.
2. Be sure load, if any, is secure.
3. Study and understand controls.
4. Be sure passenger is seated. Driver should have both hands on the steering wheel.
5. Always fasten seat belts when operating vehicle.
6. Make sure wheels are turned in desired direction and nothing is in your path.
7. Make sure the shifter handle is in the NEUTRAL position.
8. Depress and hold the brake pedal.
9. Turn the key clockwise and hold, activating the choke as necessary (**NOTE: This is a short pull choke. Take extra precaution not to over pull choke.**), until the engine is running smoothly. The engine will idle in neutral.
10. While keeping the brake pedal engaged, select direction of travel by placing shift handle in desired position (**F** = forward or **R** = reverse). Engine must be at idle before moving the shift handle.
11. Release the brake pedal completely, and then slowly depress the accelerator pedal. Disengage the parking brake and the vehicle will start to move. As the accelerator is depressed, speed will increase until full speed is reached. **See following WARNING.**

WARNING

- Operator must always control vehicle speed, especially when going downhill.
- Never shift the vehicle out of FORWARD while going downhill. If you do, you will not be able to shift into REVERSE or back into FORWARD until stopped, which could result in severe injury or death.
- Depress the brake pedal as necessary and depress the accelerator pedal partially when descending a hill.
- With the accelerator pedal partially depressed, the governor will cause the engine to assist the brakes in controlling downhill speed.

STOPPING THE VEHICLE

To stop the vehicle, release the accelerator pedal and depress the brake pedal until the vehicle comes to a complete stop.

⚠️WARNING

- Driving through water may affect the brakes. After driving through water, check effectiveness of the brakes by gently depressing the brake pedal. If the vehicle does not slow down at the normal rate, continue to depress the brake pedal until the brakes dry out and normal performance returns.

⚠️CAUTION

- When stopped on a hill, use the brake pedal to hold your position. Do not use the accelerator pedal.

PARKING AND LEAVING THE VEHICLE

1. After stopping the vehicle, **always** fully engage the parking brake. **Make sure it is fully engaged.** This will prevent the vehicle from rolling (see page 13).
2. Turn the key switch counterclockwise until the key is vertical and place the Forward/Reverse handle in the NEUTRAL position and remove the key.
3. If parking vehicle on unlevel ground, we recommend using wheel chocks for added safety.

BED LATCH

Read DANGER and WARNING on page 7.

The vehicle is equipped with a bed latch on the driver side of the vehicle (Figure 9) and an automatically engaging prop rod (Figure 10). To lift the bed, pull the latch handle upward and lift the bed. To close the bed, disengage the prop rod and gently lower the bed until the bed latch engages. DO NOT drop the bed. See following WARNING and NOTE.

⚠️WARNING

- Keep hands and all body parts as well as other objects clear of crush area between raised cargo bed, prop rod assembly and seat back support. Failure to do so could result in severe injury or death.

NOTE: The vehicle is equipped with an automatically engaging prop rod. Never tamper with or alter prop rod assembly or operation.

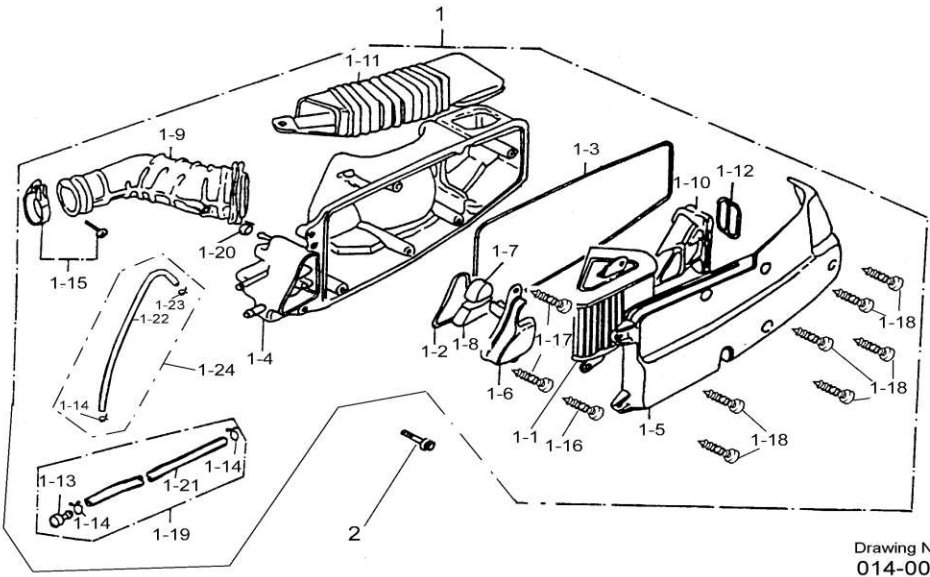


Figure 9 Bed Latch



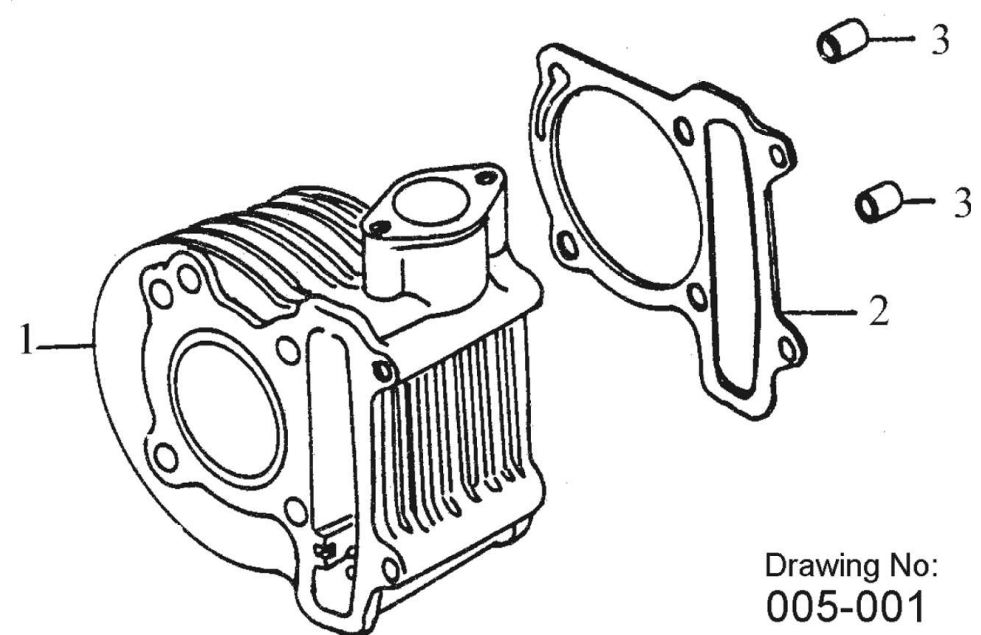
Figure 10 Prop Rod

D-14 AIR CLEANER



| P/N     | DESCRIPTION                       | FFA PART # |
|---------|-----------------------------------|------------|
| 14-1    | AIR CLEANER ASS'Y                 | 05007      |
| 14-1-1  | AIR CLEANER ELEMENT               | 05008      |
| 14-1-2  | SEAL OIL CATCH                    | 05009      |
| 14-1-3  | SEAL OIL CLEANER COVER            | 05010      |
| 14-1-4  | AIR CLEANER CASE                  | 05011      |
| 14-1-5  | CLEANER CASE CAP                  | 05012      |
| 14-1-6  | COVER OIL CATCH                   | 05013      |
| 14-1-7  | FILTER BREATHER                   | 05014      |
| 14-1-8  | FILTER OIL CATCH                  | 05015      |
| 14-1-9  | AIR CLEANER JOINT                 | 05016      |
| 14-1-10 | DUCT AIR CLEANER IN               | 05017      |
| 14-1-11 | DUCT AIR CLEANER CASE             | 05018      |
| 14-1-12 | SPRING IN DUCT                    | 05019      |
| 14-1-13 | PLUG BREATHER TUBE                | 05020      |
| 14-1-14 | CLIP                              | 05021      |
| 14-1-15 | INTAKE MANIFOLD HOSE CLAMP        | 05022      |
| 14-1-16 | PAN PHILLIPS BOLT                 | 05023      |
| 14-1-17 | TAPPING SCREW TRUSS HEAD PHILLIPS | 05024      |
| 14-1-18 | TAPPING SCREW TRUSS HEAD PHILLIPS | 05025      |
| 14-1-19 | TUBE ASS'Y DRAIN                  | 05026      |
| 14-1-20 | CLAMP TUBE                        | 05027      |
| 14-1-21 | TUBE VINYL                        | 05028      |
| 14-1-22 | BREATHER TUBE                     | 05029      |
| 14-1-23 | CLIP                              | 05030      |
| 14-1-24 | BREATHER TUBE ASS'Y               | 05031      |
| 14-2    | HEX FLANGE BOLT                   | 05032      |

D-5 CYLINDER



| P/N | DESCRIPTION     | FFA PART # |
|-----|-----------------|------------|
| 5-1 | CYLINDER        | 04839      |
| 5-2 | CYLINDER GASKET | 04840      |
| 5-3 | DOWEL PIN       | 04819      |

- The vehicle to be transported should be tied securely to the trailer, with the Forward/Reverse handle in NEUTRAL, the key switch OFF, and the parking brake firmly engaged.
- Because of the added length of the trailer, use caution when making turns.
- Do not transport the vehicle on a trailer with a load in the vehicle cargo bed.

Use an approved trailer that has a load rating of at least 2000 lb. (909 kg) per vehicle being transported.

NOTE: A two-car trailer should be rated at 2 x 2000 lb. =4000 lb. (2 x 909=1818 kg).

Always transport vehicle on an approved trailer, observing all the warning precautions.

STORAGE

Read DANGER and WARNING on page 7.  
Failure to follow danger and warning notices may result in severe personal injury and or death.

DANGER

- Do not attempt to drain gasoline when the engine is hot or while it is running.
- Be sure to clean up any spilled gasoline before operating the vehicle.
- Store gasoline in an approved gasoline container only. Store in a well-ventilated area away from sparks, open flames, heaters or heat sources.
- Keep gasoline out of the reach of children.
- Do not siphon gasoline from the vehicle.

WARNING

- Remove the key and leave the Forward/Reverse handle in the NEUTRAL position during Storage. This is to prevent unintentionally starting the vehicle or a fire hazard.
- Do not attempt to charge frozen batteries or batteries with bulged cases. Discard the battery according to state and local environmental legal guidelines for battery disposal. Frozen batteries can explode.

CAUTION

- Batteries in a low state of charge will freeze at low temperatures.

PREPARING THE VEHICLE FOR EXTENDED STORAGE

1. Unload the vehicle so that tires are supporting only the weight of the vehicle.
2. Store vehicle in a cool, dry place. This will minimize battery self-discharge. If the battery appears to be weak, have it charged by a trained technician. Use an automotive-type 12-volt battery charger rated at 10 amps or less.
3. Drain and seal the fuel tank.



SCOUT VEHICLE PARTS LIST

Please use this SCOUT vehicle parts list with illustrations to correctly identify the quality assembly part(s) required. To order or inquire about replacement parts, please first find the part(s) listed here and have the FFA part number ready when you contact us by any one of the following methods.  
By phone

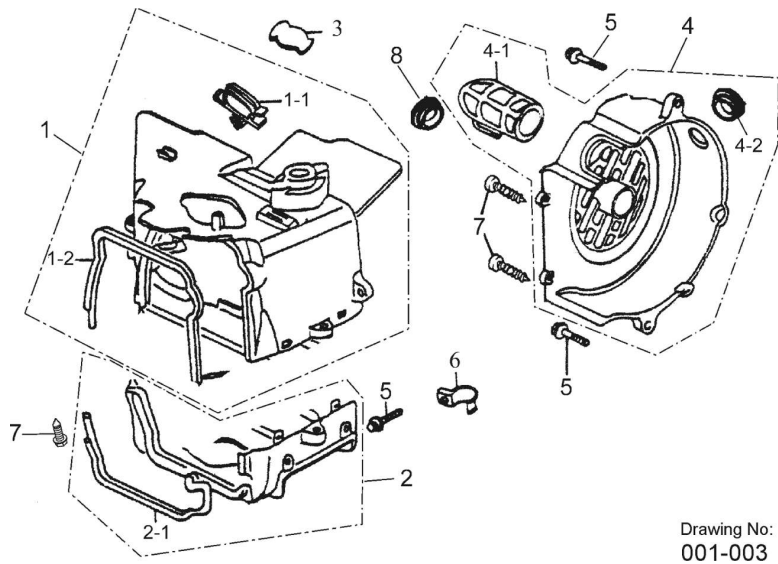
By Phone: (toll free) 1-888-926-6554  
Monday - Friday, 7am - 11am, 12pm - 4pm MST

By Fax: 602-324-1855

By Email: customerservice@yerf-dog.com  
Replies provided Monday - Friday, 7am - 11am, 12pm - 4pm MST

By U.S. Mail: Yerf Dog • 1743 South Horne Suite 100 • Mesa, AZ 85204

D-1 FAN COVER, SHROUD



| P/N   | DESCRIPTION             | FFA PART # |
|-------|-------------------------|------------|
| 1-1   | SHROUD - UPPER          | 04779      |
| 1-1-1 | BREATHER TUBE CLAMPER   | 04780      |
| 1-1-2 | SHROUD SEAL UPPER       | 04781      |
| 1-2   | SHROUD -LOWER           | 04782      |
| 1-2-1 | SHROUD SEAL-LOWER       | 04783      |
| 1-3   | RUBBER BUNG B           | 04784      |
| 1-4   | FAN COVER ASS'Y         | 04785      |
| 1-4-1 | CARBURETOR COOLING DUCT | 04786      |
| 1-4-2 | RUBBER BUNG             | 04787      |
| 1-5   | HEX FLANGE BOLT         | 04788      |
| 1-6   | CLAMPER CARB DRAIN TUBE | 04789      |
| 1-7   | CROSS TAPPING SCREW     | 04790      |
| 1-8   | RUBBER CAP              | 04791      |

- 3.1. Place the Transmission Gear Shift lever in the NEUTRAL position and run the engine until fuel remaining in the carburetor and fuel lines is depleted and the engine stalls.

3.2. Loosen, but do not remove, the carburetor drain screw and drain fuel remaining in bowl into a small, clean container, then pour the fuel from the container into vehicle fuel tank. Tighten the carburetor drain screw.

3.3. Fill fuel tank to about 1 inch (2.5 cm) from top of fuel tank and, following manufacturer's directions, add a commercially available fuel stabilizer (such as Sta-Bil®).

3.4. Disconnect fuel vent line from fuel tank vent nipple.

3.5. Plug the fuel tank vent nipple so that it is air tight. We recommend using a slip-on vinyl cap.
4. Disconnect battery cables, negative (-) cable first.
5. Batteries should be clean and free of corrosion. Wash tops and terminals of batteries with a solution of baking soda and water (1 cup (237mL) baking soda per 1 gallon (3.8 L) of water). Rinse solution off batteries. Do not allow this solution to enter the batteries. Be sure terminals are tight. Let the terminals dry and then coat them with Battery Terminal Protector Spray.
6. To protect the engine, remove the spark plug and pour 1/2 ounce (14.2 mL) of SAE 10 weight oil into engine through the spark plug hole. Rotate engine crankshaft by hand several times and then install spark plug.
7. Adjust tires to recommended tire pressure. See Vehicle Specifications on page 38.
8. Lubricate front suspension and do all other semi-annual periodic lubrication. See Periodic Lubrication Schedule on page 25.
9. Thoroughly clean front body, rear body, seats, cargo bed, engine compartment, and underside of vehicle.
10. Do not engage the park brake. Chock the wheels to prevent the vehicle from rolling.

RETURNING THE STORED VEHICLE TO SERVICE

1. Restore fuel system to operation (Figure 16, Page 28).
- 1.1. Remove plug from the fuel tank vent.

1.2. Connect vent tube to fuel tank vent.
2. Connect battery cables, positive (+) cable first.
3. Place the Forward/Reverse handle in the NEUTRAL position and engage parking brake. Crank the engine until fuel is pumped into the carburetor and fuel lines and the engine starts. Turn the engine off. See following NOTE.
- NOTE: Due to the oil added to the engine in preparation for storage, engine may smoke excessively for a short while when running it for the first time after storage.
4. Adjust tires to recommended tire pressure. See Vehicle Specifications on page 38.
5. Perform the Pre-Operation and Daily Safety Checklist on page 14.



SCOUT CUV SPECIFICATIONS

|                                |   |
|--------------------------------|---|
| Engine type                    | Forced Air / Oil Cooled, 4-Stroke             |
| Horsepower & Displacement      | 10 hp   |
| Bore & Stroke                  | 57.4 x 57.8mm                                 |
| Compression Ratio              | 9.2:1   |
| Max. Torque                    | 7.0 ft. lbs. @ 5500 rpm                       |
| Starting                       | Electric Start                                |
| Lubrication / Oil Capacity     | Oil Injection / 1 quart (1 liter)             |
| Transmission                   | Automatic CVT w/reverse gear                  |
| Suspension Front               | Single A-Arm Coil over hydraulic damped shock |
| Brakes Front                   | NA  |
| Brakes Rear                    | Dual Drum                                     |
| Tires Front                    | 22/9 x 10 w/ 4 hole rim                       |
| Tires Rear                     | 22/11 x 8 w/4 hole rim                        |
| Tires Front psi                | 6 PSI   |
| Tires Rear psi                 | 6 PSI   |
| Dimensions H x W x L           | 72.5” x 52.5” x 104.5”                        |
| Wheelbase                      | 68”   |
| Seat Height                    | 32”   |
| Ground Clearance               | 5.5”  |
| Dry Weight                     | 860 lbs +/- 10                                |
| Max. Load (Cargo Box Capacity) | 365 lbs. or 8 cu. ft.                         |
| Max. Towing (Tounge Weight)    | 125 lbs.                                      |
| Fuel                           | Unleaded Gasoline                             |
| Fuel Capability                | 5.5 gal                                       |
| Cooling                        | Forced Air Oil Cooled                         |
| Oil Filter                     | Washable Permanent Filter                     |
| Air Filter                     | Replaceable Single Element with Intake        |
| Battery                        | 12v 175 amps                                  |
| Headlights                     | 12v Single Beam, 35 watt                      |
| Ignition                       | Key Switch, Capacitive Discharge (CDI)        |

MAINTENANCE

Read DANGER and WARNING on page 7.

To ensure trouble-free vehicle performance, it is very important to follow the established preventive maintenance program. Regular and consistent vehicle maintenance can prevent vehicle downtime and expensive repairs that result from neglect. Please use the SCOUT CUV Pre-Operation and Daily Safety Checklist on page 14 and the following Periodic Service Schedule and Periodic Lubrication Schedule to keep the vehicle in proper working condition.

Any vehicle not functioning correctly should be removed from use until it is properly repaired. This will prevent further damage to the vehicle and avoid the possibility of injury due to unsafe conditions.

⚠ WARNING

- If any problems are found during scheduled inspection or service, do not operate the vehicle until repairs are made. Failure to make necessary repairs could result in fire, property damage, severe personal injury, or death.
- Do not wear loose clothing or jewelry, such as rings, watches, chains, etc., when servicing the vehicle. Failure to do so, could result in severe personal injury or death.
- Remove the key, place the Forward/Reverse handle in the NEUTRAL position, engage parking brake and chock the wheels prior to servicing.
- Moving parts: Do not attempt to service vehicle while the engine is running.
- Do not work on vehicle powertrain or under the cargo bed when it is loaded and/or if the parking brake is disengaged.
- Hot! Do not attempt to service hot engine or exhaust system. Failure to heed this warning could result in severe burns.
- Do not remove prop rod or close cargo bed until all persons and objects are clear of the bed area. Lower the bed gently, keeping all persons and body parts clear. Do not drop the bed. Failure to follow these instructions could result in severe personal injury or death.
- Cargo bed prop rod and assembly should never be tampered with or altered. Failure to follow these instructions could result in severe personal injury or death.

PERIODIC SERVICE SCHEDULE

Read DANGER and WARNING on page 7.

- Periodic maintenance will help keep your CUV in the safest, most reliable condition. Inspection, adjustment and lubrication intervals of important components are explained in the chart on the following pages.
- Maintenance intervals are based upon average driving conditions and an average CUV speed of approximately 10-mph. CUVs subjected to severe use, such as operation in wet, dusty or salt-water areas, should be inspected and serviced more frequently. If you are not familiar with safe service and adjustment procedures, have your local Service Center perform these operations.
- Inspect, clean, lubricate, adjust or replace parts as necessary. NOTE: Inspection may reveal the need for replacement parts. Always use genuine Yerf-Dog parts from your local Service Center.

| PERIODIC SERVICE SCHEDULE  |                                   |  |
|--|-----------------------------------|--|
| REGULAR INTERVAL   | SERVICE                           |  |
| Monthly service by owner or trained technician   | Engine                            | Check engine oil level; change if necessary. <b>See Periodic Lubrication Schedule on page 25.</b>                                    |
|  |                                   | Check engine cooling air intake; visually inspect unshrouded area around engine exhaust for grass and debris and clean if necessary. |
|  | Tires                             | Check air pressure and adjust as necessary. <b>See Vehicle Specifications on page 38.</b>  |
|  | General vehicle                   | Wash engine compartment and underside of vehicle. Do not wash engine when hot.   |
| Semiannual service by owner or trained technician (every 50 hours of operation)  | Battery                           | Clean terminals and wash dirt from casing; check electrolyte level. <b>See Battery on page 29.</b>                                   |
|  | Electrical wiring and connections | Check for tightness and damage.  |
|  | Brake system                      | Verify and replace any worn components that could result in brake failure.   |
| Annual service by owner or trained technician (every 100 hours of operation)<br><br>Due to the nature of the adjustments marked with a *, it is recommended that service be performed by an authorized Servicing Center. | Engine                            | Check for leaks around gaskets, fill plugs, etc.   |
|  |                                   | Inspect, clean and gap spark plug; replace if necessary.   |
|  |                                   | Check clamps for tightness; check hose for cracks.   |
|  | General vehicle                   | Check for loose hardware and tighten if necessary.   |
|  | * Fuel filter                     | Replace. Do not attempt to clean the fuel filter.  |
|  | Air filter                        | Replace. Dispose of used filters properly.   |
| Annual service by owner or trained technician (every 200 hours of operation)   | Transmission Oil                  | See page 27 (Transmission Oil Change)  |

Regularly clean the engine shroud and oil cooler of any debris. Accumulation of debris in these areas will result in engine failure and will void the warranty of this unit. Periodic checks should be made in these areas after each use. Additional checks should be made during prolonged running in extreme conditions.

**⚠ WARNING**

- If any problems are found during scheduled inspection or service, do not operate the vehicle until repairs are made. Failure to make necessary repairs could result in fire, property damage, severe personal injury, or death.

| TROUBLE SHOOTING GUIDE  |                                  |                                 |
|---|----------------------------------|---------------------------------|
| The following information is provided to help you identify probable questions you may have about the operation of your SCOUT vehicle. See your Service Center with any additional questions you may have. Contact Yerf-Dog Customer Service to find a service center near you - 1-888-926-6554. |                                  |                                 |
| PROBLEM   | CAUSE                            | SOLUTION                        |
| Engine turns but fails to start.  | No fuel                          | Replenish fuel                  |
|   | Clogged fuel filter              | Replace fuel filter             |
|   | Water in fuel system             | Drain fuel system and replenish |
|   | No spark to spark plug           | Contact your Service Center     |
| Engine stops or losses power.   | No fuel                          | Replenish fuel                  |
|   | Clogged fuel filter              | Replace fuel filter             |
|   | Water in fuel system             | Drain fuel system and replenish |
|   | Fuel Vent Line kinked or plugged | Unkink or unplug Fuel Vent Line |
|   | Spark Plug fouled                | Replace Spark Plug              |
|   | Air Filter clogged               | Replace Air Filter              |
|   | Exhaust Restricted               | Contact your Service Center     |
|   | Engine Overheated                | Allow to cool                   |
|   |                                  | Clean Oil Cooler Screen         |

### Attach Lumbar Seat Pads and Headrests to the Rear Brush Guard using Machine Screws (#16).

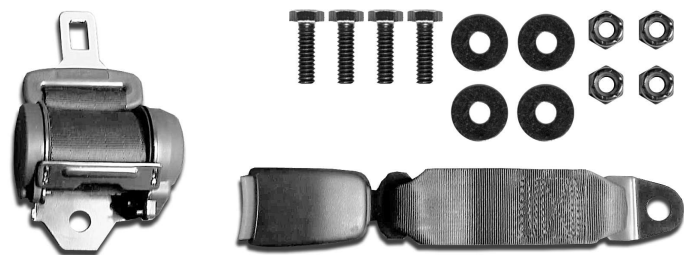


## LUBRICATION RECOMMENDATIONS

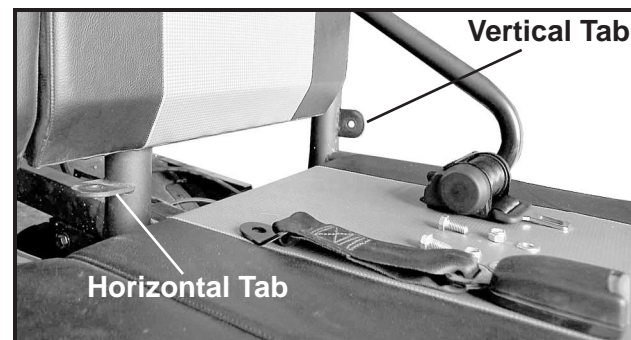
| ITEM             | LUBRICATION<br>RECOMMENDATION | METHOD  | FREQUENCY                                     |
|------------------|-------------------------------|---|---|
| Engine Oil       | SF-SG SAE 15W-40              | See page 27.  | Change every 6 months,<br>or every 100 hours. |
| Transmission Oil | SAE 85W-140                   | See page 27.  | Change annually<br>or every 200 hours.        |
| Drive Chain      | Chain Lube or<br>85W-140      | Lubricate every 5 hours of use and<br>before each ride in wet conditions. | As required.                                  |
| Front-A-Arm      | Grease                        | Locate fittings and grease.   | Every 3 months<br>or every 50 hours.          |

## SEATBELT HARDWARE

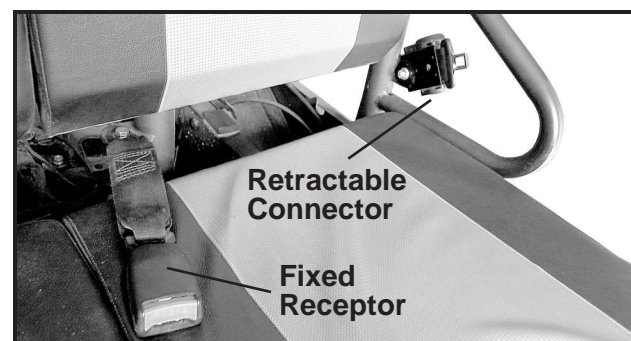
- #11 - (4) 7/16" x 3/4" Bolts  
#12 - (4) 7/16" Locknuts  
#13 - (4) 7/16" Flat Washers  
(2) Retractable Connectors  
(2) Fixed Receptors



- 1) Raise and lock dump bed in tilted position.
- 2) Position fixed receptor so red button faces upward (see image at right).
- 3) Place fixed receptor tab on top of horizontal tab (on rear base of brush guard) and align holes.
- 4) Place washer on bolt and insert bolt from the top of the tab down.
- 5) Place nut on bolt and tighten.



- 1) Position retractable connector so the barrel faces toward the outside of the vehicle.
- 2) Angle the connector at approximately a 30 to 45 degree angle from horizontal.
- 3) Place retractable connector tab on the inside of the vertical tab and align holes.
- 4) Place washer on bolt and insert bolt from the inside of the tab outward.
- 5) Place nut on bolt and tighten.
- 6) Repeat procedure for other seat.



Use the following chart to record periodic maintenance work.

[illegible]



## ENGINE OIL

Engine oil level should be checked monthly. Vehicle should be on a level surface when checking oil. Do not overfill with oil.

### ENGINE OIL LEVEL CHECK

1. Remove the oil level dipstick from the oil filler tube and wipe oil from dipstick (Figure 11). See following CAUTION.

#### ⚠ CAUTION

- Do not remove dipstick while engine is running.
2. Check oil by fully inserting the dipstick into the oil filler tube and immediately remove it again. Do not screw in the cap when checking level.
  3. If the oil level is at or below the low level mark on the dipstick gauge, add oil until the level is between low and full levels (safe level).
  4. Reinsert dipstick into the oil filler tube and be certain it is securely in place. Failure to securely reinsert dipstick will result in oil leakage and damage to engine.

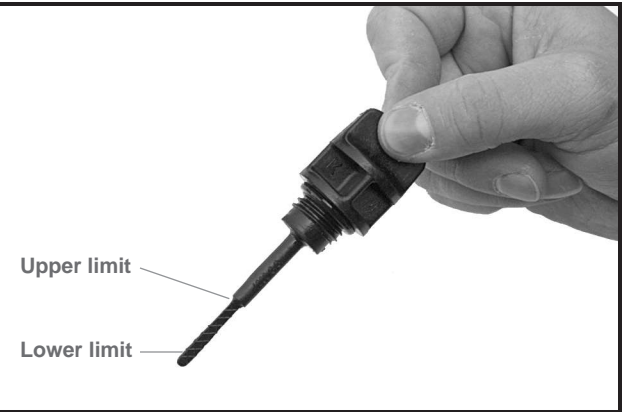


Figure 11 Engine Oil Level Check

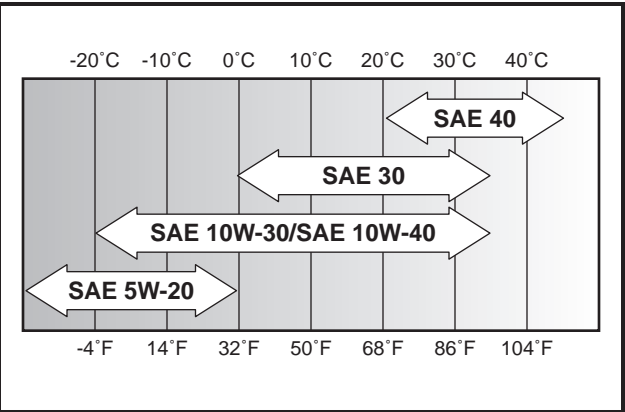


Figure 12 Oil Viscosity Recommendation Chart

#### ⚠ WARNING

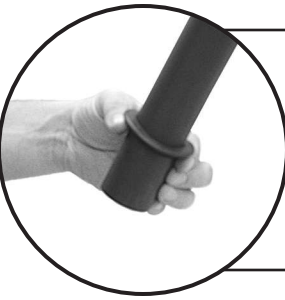
- In order to maintain the excellent performance of your CUV engine, check the engine oil level before every use.
- To avoid serious engine damage, always refill oil reservoir when the oil level is low. Running the engine with low oil levels will cause the engine to overheat and seize. If the engine seizes, it will have to be rebuilt by your Servicing Center.
- Engine repair cost resulting from damage caused by running the engine with low oil levels is not covered under warranty

### OIL VISCOSITY

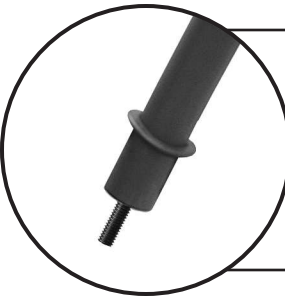
Choose the oil grade viscosity according to the temperature in operating area as indicated by the Oil Viscosity Recommendation Chart (Figure 12). See following NOTE.

NOTE: Using multi-grade oils (5W-20, 10W-30, and 10W-40) will increase oil consumption. Check oil level more frequently when using them.

## BRUSH GUARD ATTACHMENT - PRELIMINARY STEPS



Slide rubber grommets onto front end of both driver and passenger side brush guards before attaching to unit.



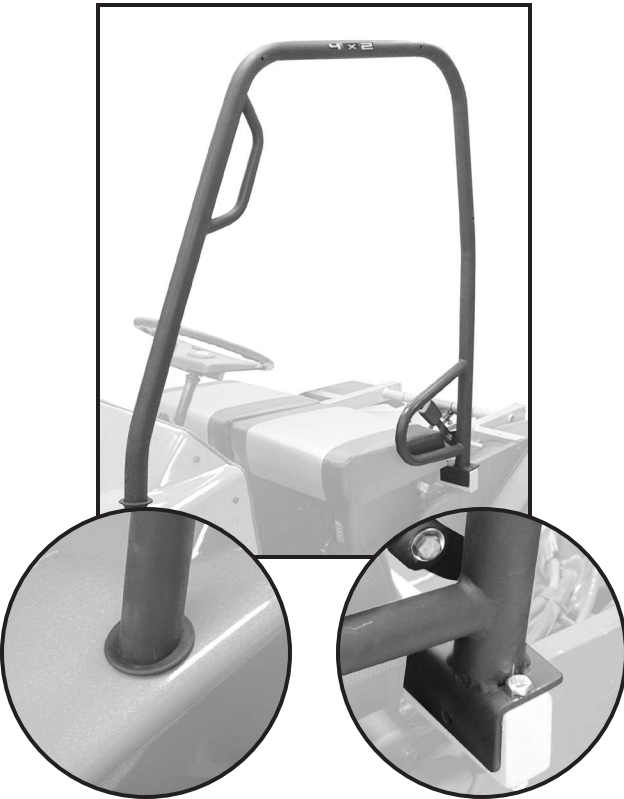
Insert 3/8" stud (#??) into threaded mounting hole at front end of both driver and passenger side brush guards before attaching to unit.

### BRUSH GUARD ATTACHMENT STEP 1 - DRIVER SIDE

Attach Driver Side Brush Guard to the vehicle frame at rear using Bolts (#07), Washers (#08) and Nuts (#09). Attach at the front from underneath the fender using Nuts (#09). **Note:** 33 ft. lbs of torque required

### BRUSH GUARD ATTACHMENT STEP 2 - PASSENGER SIDE

Attach passenger Side Brush Guard to the vehicle frame at rear using Bolts (#07), Washers (#08) and Nuts (#09). Attach at the front from underneath the fender using Nut (#09). Attach to Rear Brush Guard using: Bolts (#07). We have found that it aids in assembly to insert bolts as shown in the following steps.

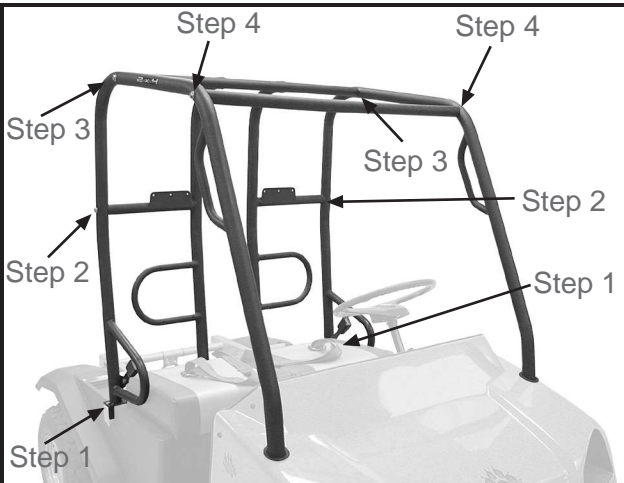


### BRUSH GUARD ATTACHMENT STEP 3 - REAR

Attach Rear Brush Guard to the vehicle frame at the bottom using Bolts (#07), Washers (#08) and Nuts (#09). Attach to passenger side brush guard using Bolts (#07). Note: Lift seats for easier access to mounting holes.

### BRUSH GUARD ATTACHMENT STEP 4 - CROSS MEMBER

Attach Cross Member to driver and passenger side brush guards using Bolts (#07).





## FRONT BUMPER INSTALLATION

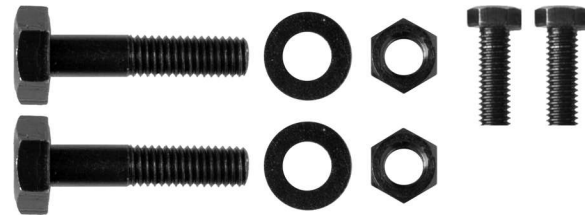
### Insert all bolts and nuts before tightening.

Hardware is shipped pre attached to bumper. Remove hardware before attaching. Attach Front Bumper to frame at bottom center using Bolts (#05). Attach at top left and top right using Bolts (#02), Washers (#03) and Locknuts (#04). **Note: attach at bottom center first.**



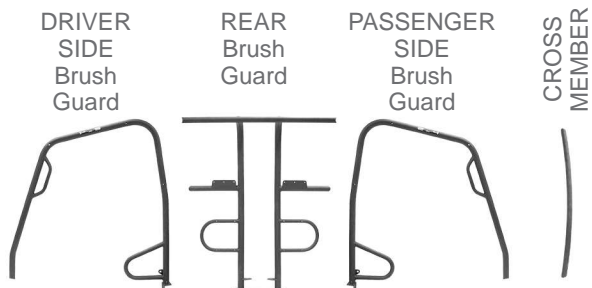
### FRONT BUMPER HARDWARE

- #02 - (2) 3/8" x 2" Bolts
- #03 - (2) 3/8" Flat Washers
- #04 - (2) 3/8" Lock Nuts
- #05 - (2) 3/8" x 1-1/4" Bolts



## BRUSH GUARD ASSEMBLY AND INSTALLATION

### BRUSH GUARD COMPONENTS



Note: To determine left and right brush guard placement, the 4x2 decal should be to the outside.

**NOTE: Do not tighten Bolts or Nuts until all pieces of the brush guard are assembled.**

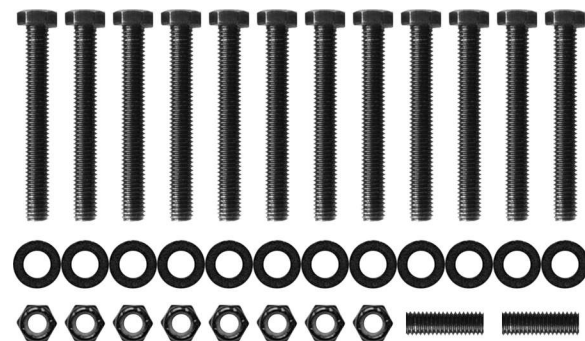
Loosen nut on stud as needed to aid in assembly.

### CAUTION

The Brush Guard Components are not designed or intended to serve as a Roll Over Protective Structure and should not be relied upon to protect the occupants in the event of a vehicle rollover. To prevent severe personal injury or death from vehicle rollover, follow the warnings and instructions in this manual and in the decals on the vehicle itself.

### BRUSH GUARD HARDWARE

- #06 - (2) Rubber Grommets
- #07 - (12) 3/8" x 3-1/4" Bolts
- #08 - (14) 3/8" Flat Washers
- #09 - (8) 3/8" Lock Nuts
- #10 - (2) 3/8" x 1-1/2" Bolts



### LUMBAR SEAT PAD / HEADREST HARDWARE

- #16 - (14) Machine Screws



## ENGINE OIL CHANGE

1. Run unit for at least five (5) minutes or until warm. Turn Engine OFF and remove the key.
2. Place suitable container for draining oil beneath the engine.
3. Remove the engine drain plug, oil filter cap, spring and oil filter screen. Let the oil drain completely.
4. Clean and inspect oil drain plug gasket, oil cap sealing O-ring and oil filter screen for damage. Replace if damaged.
5. Install the drain plug and torque to 12 ft. lbs.
6. Fill with API classification SF-SG SAE 15W-40 Oil, 1.25 quarts.
7. Start engine and check for leaks.
8. Shut off engine and check the oil level with the dipstick. Do not screw it in when making this check. Add oil if necessary to fill up to the safe range indicated on the dipstick.



Figure 13 Engine Drain Plug

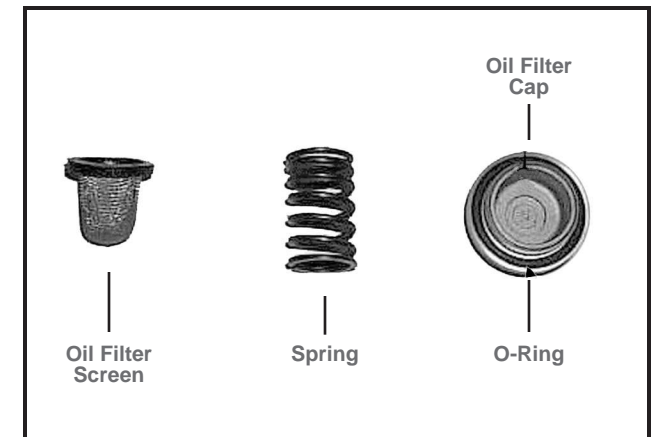


Figure 14 Oil Filter Cap / O-Ring / Screen / Spring

## TRANSMISSION OIL CHANGE

1. Run SCOUT vehicle for at least five (5) minutes or until warm. Turn off unit and remove the ignition key.
2. Place a suitable container for draining oil beneath the rear of engine.
3. Remove the transmission drain plug (located under rear of sprocket shaft) (Figure 15). Let drain complete.
4. Remove fill plug located on left rear of engine case. (Figure 15B)
5. Inspect drain and fill plug gasket for damage. Replace with new gasket if damaged.
6. Replace drain plug, torque to 95 in. lbs.
7. Fill transmission through the oil fill plug with 7 oz. (200 cc) SAE 85W-140 gear oil.
8. Replace oil fill plug and start the engine.

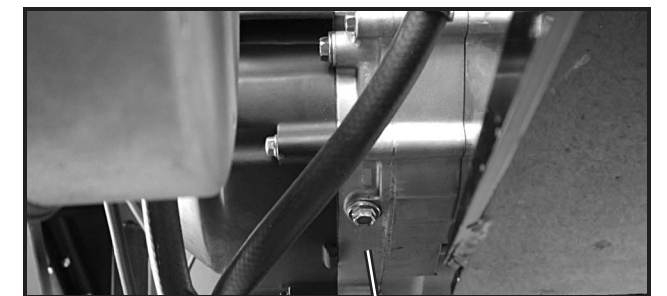


Figure 15 Transmission Drain Plug

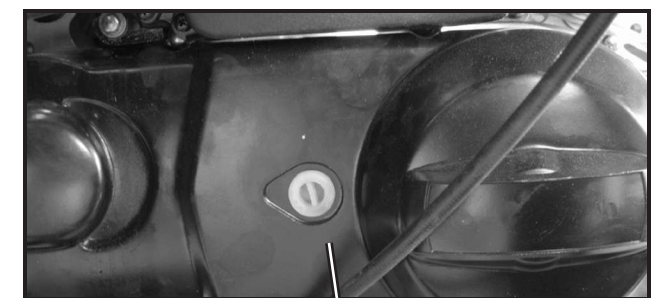


Figure 15B Transmission Fill Plug

Change the gear oil after the first 30 hours of operation. The recommended gear oil is SAE 85W-140.

## FUELING INSTRUCTIONS

Read DANGER and WARNING on page 7.

### ⚠ DANGER

- Turn key switch OFF before fueling.
- Do not pour gasoline into the fuel tank when the engine is hot or while it is running.
- To avoid the possibility of fire, clean up any spilled gasoline before operating the vehicle.

### ⚠ CAUTION

- To allow for expansion, do not fill higher than one inch (2.54 cm) from the top of the fuel tank. Avoid spilling fuel.

NOTE: Whenever possible, avoid using oxygenated fuels and fuels that are blended with alcohol. Vehicles to be stored for extended periods should be prepared for storage as instructed. See Preparing the Vehicle for Extended Storage on page 21.

1. The fuel tank is located on passenger side of vehicle. When adding fuel, use the side fill access, do not use the top fill access under the seat. Remove fuel cap and fill the fuel tank with fresh unleaded gasoline only. Do not fill tank above the bottom edge of the side fill access. See preceding DANGER, CAUTION, and NOTE.
2. Replace fuel cap on tank. Make sure cap is tightened securely.



Figure 16a Fuel Cap



Figure 16b Fuel Tank

## BATTERY

Read DANGER and WARNING on page 7.

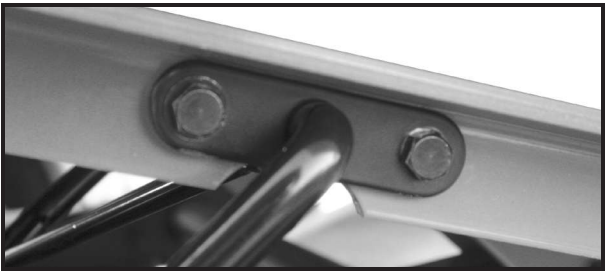
### ⚠ DANGER

- Battery - Explosive gases! Do not smoke. Keep sparks and flames away from the vehicle and service area. Ventilate when charging or operating vehicle in an enclosed area. Wear a full face shield and rubber gloves when working on or near batteries.
- Tools, wires, and metal objects can cause sparks when shorted across a battery.
- Follow all instructions carefully when working with batteries.
- Charge battery in a well-ventilated area only.
- Battery - Poison! Contains acid! Causes severe burns. Avoid contact with skin, eyes, or clothing. Antidotes:
  - External: Flush with water. Call a physician immediately.
  - Internal: Drink large quantities of milk or water followed with milk of magnesia or vegetable oil. Call a physician immediately.
  - Eyes: Flush with water for 15 minutes. Call a physician immediately.

## ATTACHING THE PROP ROD (continued)

Slip retaining bracket over Prop Rod handle and attach to Cargo Bed using Bolts, Nuts and Washers included with the Prop Rod.

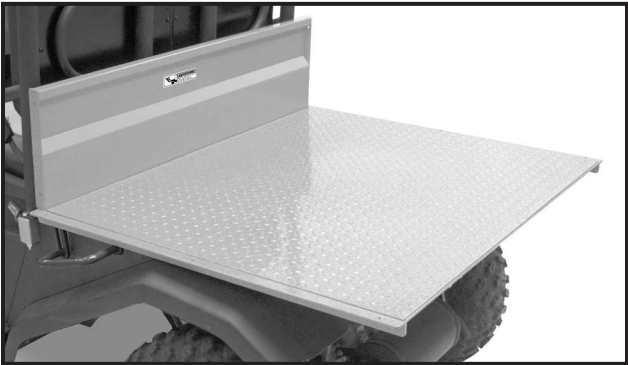
The prop rod spring should be inserted into the spring eyelet of the prop rod assembly and then pulled over the spring retainer rod.



If Cargo Box Base has been properly attached, the Prop Rod should slide forward or backward inside the prop rod track when base is lowered or raised.

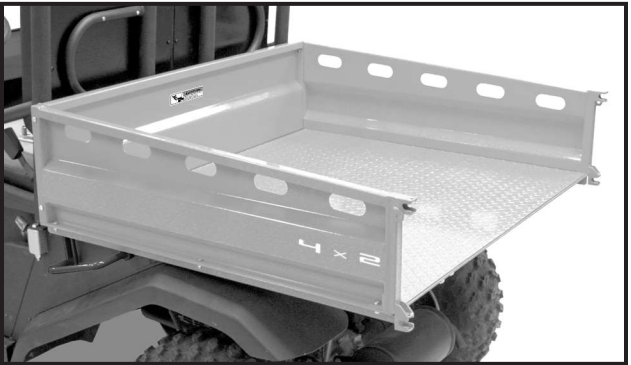
### STEP ③ - FRONT WALL

Attach Front Wall to base using Bolts (#24), Nuts (#26) and Washers (#25). Note: Washers go on top.



### STEP ④ - SIDE WALLS

Attach Side Walls to base using Bolts (#24), Nuts (#26) and Washers (#25). Attach Side Walls to Front Wall using Bolts (#23), Nuts (#26) and Washers (#25). Note: Washers go on top.



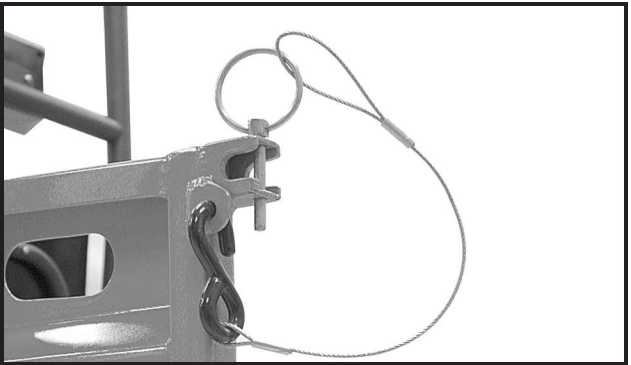
### STEP ⑤ - DROP DOWN GATE

Remove bolts from drop down gate, attach gate and re-insert bolts. One washer goes between side wall and gate, the other washer goes over bushing and inserts into hole.



### STEP ⑥ - GATE PIN

Attach Gate Pin as shown.



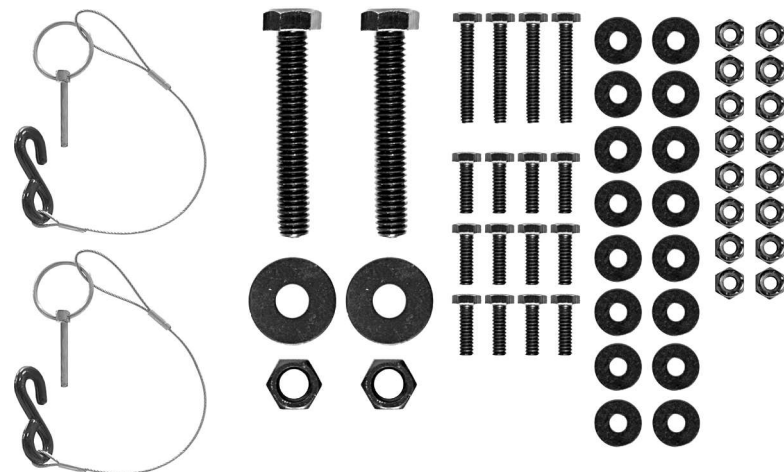


CARGO BED - ASSEMBLY AND INSTALLATION

CARGO BED HARDWARE

- #20 - (2) 7/16" x 3" Bolts
- #21 - (2) 7/16" Flat Washers
- #22 - (2) 7/16" Lock Nuts
- #23 - (4) 1/4" x 1-1/2" Bolts
- #24 - (12) 1/4" x 3/4" Bolts
- #25 - (16) 1/4" Flat Washers
- #26 - (16) 1/4" Locknuts
- #28 - (2) Gate pins with cable

NOTE: Do not tighten Bolts or Nuts until all pieces of the cargo bed are assembled.



STEP 1 ATTACHING THE CARGO BED BASE TO THE VEHICLE FRAME

Lay cargo box base flat and attach to vehicle frame using Bolts (#20), Washers (#21) and Nuts (#22).



STEP 2 ATTACHING THE PROP ROD TO THE CARGO BED BASE

PROP ROD HARDWARE



After attaching the Cargo Bed Base to the frame, lift base all the way up. Insert short "L" end of Prop Rod into the prop rod slide tray, located on the frame (FIGURE 1).

While holding the prop rod and keeping it in the slide tray, lower the cargo bed enough to insert the end of the prop rod handle into hole in bottom of cargo bed (FIGURE 2). Lower the cargo bed even further to position the prop rod into the retaining bracket location (FIGURE 3) - making sure the "Stop" on the Prop Rod Handle is on the inside of the bottom rail of the Cargo Bed Base (FIGURE 3).

FIGURE 1



FIGURE 2



FIGURE 3



⚠ WARNING

- Do not jump-start a dead battery using another battery and jumper cables.
- To avoid the possibility of explosion, always connect battery cables in the order specified: Red (+) first; Black (-) last. An exploding battery can cause serious injury or death.

Battery Installation

Please follow the below instructions carefully.

BATTERY INSTALATION HARDWARE AND COMPONENTS

Battery  
Box of Electrolyte  
Hardware bag 1: (1) Bracket, (1) 1/4" Nut, (1) 1/4" Washer and (1) J-Bolt  
Hardware bag 2: (2) Nuts, (2) Bolts, (2) Hoses  
Instructions titled: "Motorcycle Battery Dry & Charged"

1. The battery and it's components are located in a box under the driver's seat. Remove the battery and it's components from box and place battery on a level surface.
2. Fill battery with electrolyte and charge, as outlined in the "motorcycle battery dry & charged" instructions. **Use caution when handling electrolyte!!!**
3. Place charged battery into battery bay located under driver's seat (Figure 17A).
4. Insert nuts into both the positive and negative battery posts (Figure 17B).
5. Insert bolts through both the positive and negative battery cable connectors. (Figure 17C).
6. Insert each bolt (with battery cable connected) through holes in each battery post, align with nuts (previously inserted) and tighten bolts securely. (Figure 17D)  
**Note: red wire is positive!!! Cover positive post with red cap.**
7. Remove lock nut and washer from j-bolt, remove lock nut and washer from stud located on side wall.
8. Insert j-bolt into hole in frame, with threaded end up.
9. Slide battery bracket (u-shape up) onto the j-bolt and onto the threaded stud located on side wall (Figure 17E).
10. Attach using washers and 1/4" lock nuts. Equally tighten both lock nuts enough so that the battery does not move.



Figure 17A

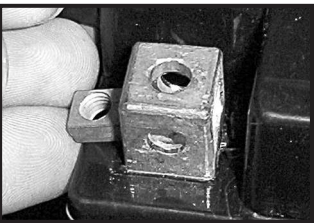


Figure 17B

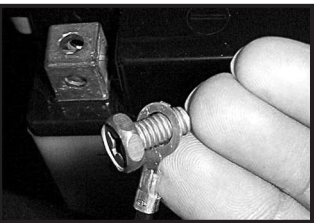


Figure 17C

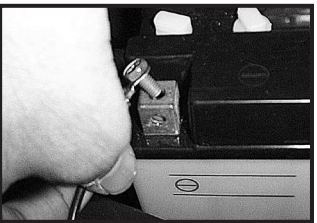


Figure 17D

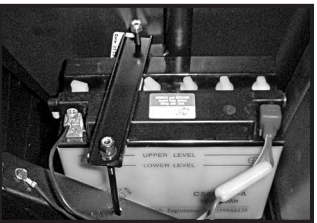


Figure 17E

⚠ CAUTION

- Do not over tighten the battery bracket, this could cause damage to the battery.
- If battery wire terminals are damaged or corroded, replace or clean them as necessary. Failure to do so may cause them to overheat during operation.

NOTE: If the CUV will not be operated for 3 months or more, the battery should be removed, charged to proper level, and stored in a cool, dry place. Before reusing, take the battery to your Service Center for testing and recharging.



## SPARK PLUG

A fouled (black deposit on the spark plug electrodes) and/or improper gap size may result in spark plug misfire. The proper gap for the electrode is .024 – .028 inch (0.6 – 0.7 mm). The standard type of spark plug is **NGK C7HSA** or **NGK CR7HSA (FFA part number 04801)**.

## DRIVE CHAIN

After periods of extended operation, the drive chain will stretch and loosen. The normal chain slack should be 1/8". Check the drive chain and adjust if necessary before each use. Keep the drive chain properly lubricated.

The slack can be adjusted by the chain adjuster. **(Figure 18)** Loosen the top roller bolt and adjust the slack to the proper setting. After adjusting the chain, don't forget to tighten the nuts.

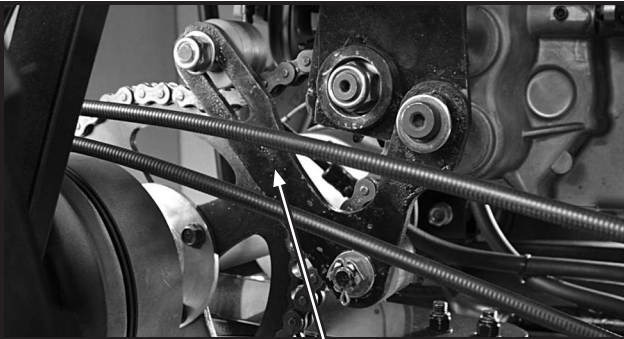


Figure 18 Chain Adjuster

## SUSPENSION

### FRONT SUSPENSION

The front right and left side suspension can be adjusted to various pre-load positions so they can be matched to load and driving conditions.

Always be sure to adjust both front left and front right shock absorbers to the same position. Failure to do so could result in severe injury or death.

The front right and left side suspension can be adjusted to various pre-load positions so they can be matched to load and driving conditions.

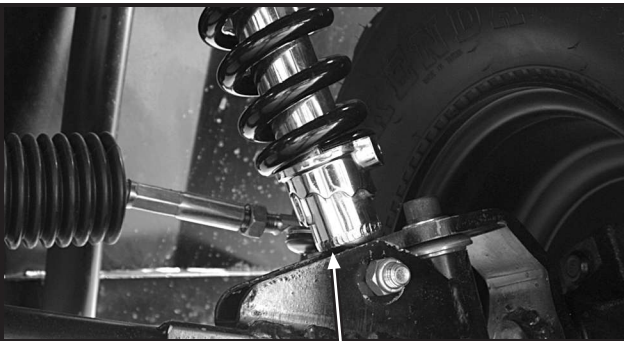


Figure 19 Front Suspension Adjuster Ring

## SCOUT VEHICLE CLEANING

Keeping your SCOUT vehicle clean will not only improve its appearance but it can also extend the life of various components. With a few precautions, your SCOUT vehicle can be cleaned much like an automobile.

### Washing

Do not use a high-pressure type car wash system. Many expensive repair bills can result from the damage caused by the high-pressure wash to wheel bearings, transmission seals, body panels, brakes and warning labels.

The best and safest way to clean your SCOUT vehicle is with a garden hose and a pail of mild soap and water (NOTE: Do not use ammonia based products). Use a professional type washing mitten, cleaning the upper body first and the lower parts last. Rinse with water frequently and dry with a chamois to prevent water spots. NOTE: If warning labels are damaged, contact your Servicing Center for replacement.

### Waxing

Your SCOUT vehicle can be waxed with any non-abrasive paste wax. Avoid the use of harsh cleaners since they can scratch the body finish.

## CONSUMER ASSEMBLY AND INSTALLATION

### SOME ASSEMBLY REQUIRED

Please carefully follow the following YERF-DOG CUV SCOUT assembly instructions.

If you prefer, we can arrange for an independent, local service center to assemble your SCOUT for you at a minimal assembly cost.

Precise manufacturing, assembly and quality care has prepared this SCOUT vehicle for use. Before operator use can begin, the following assembly and installation sections in this manual require your careful attention to correctly complete the assembly of this SCOUT vehicle for years of safe and properly performing operation.

**NOTE: While assembling and installing the components in each of the following sections, do not tighten the bolts or nuts until all components of the section are assembled.**

Approximate assembly time for the following assembly and installation sections are:

- Steering Wheel assembly . . . . . 5 minutes
- Front Bumper attachment . . . . . 8 minutes
- Brush Guard assembly and attachment . . . . . 20 minutes
- Seat Belt attachment . . . . . 15 minutes
- Lumbar Seat Pad assembly and attachment . . . . . 15 minutes
- Cargo Bed assembly and attachment . . . . . 1 hour

**Verify proper tire pressure.**  
Prior to running this vehicle, it is important that you verify the proper tire pressure. Both front and rear tires for this vehicle should not exceed 6 PSI. Failure to run without the proper tire pressure could result in serious injury or death.



Please feel free to contact us should any questions arise during or after the assembly process.

### By phone: (toll free)

1-888-926-6554  
Monday - Friday,  
7am - 11am, 12pm - 4pm MST

### By Email:

customerservice@yerf-dog.com  
Replies provided Monday - Friday,  
7am - 11am, 12pm - 4pm MST

### By U.S. Mail:

Flexible Flyer Wheel Goods  
1743 S. Horne #100  
Mesa, AZ 85204

## STEERING COLUMN ASSEMBLY

### STEERING COLUMN HARDWARE

- #30 - (2) 3/8"x1" Bolts
- #32 - (2) 3/8" Nuts



The steering column hardware is located in the seatbelt hardware bag.

For shipping purposes, the steering column is disconnected from the dash mount and folded down during shipping.

To reconnect the steering column, lift it up and align the **mounting tab** on the steering column (rotate around shaft if necessary) with the groove in the **steering column mount** located in the dash panel. Insert into groove and align bottom hole, insert Bolts (#30) and nuts (#32) into both top and bottom holes and tighten.

