

Yerf-Dog™

Model# 3101 PUP



Flexible Flyer

100 Tubb Avenue
West Point, MS 39773
1-888-389-5522 (U.S.A.)
1-888-707-1880 (Canada)

03246
Rev. B
6/03/02

IMPORTANT INFORMATION

- Your new vehicle requires adult assembly. Please set aside at least 60 minutes for assembly.
- Read this manual carefully for important safety information and operating instructions before using your vehicle.
- This vehicle is designed for use on grass, asphalt and other hard surfaces, on flat terrain and hills, by children 4-8 years of age.

If you have any questions about your Yerf-Dog Pup, please call our toll free service lines at 1-888-389-5522 from 8am to 5pm (CST) Monday through Friday.

For your convenience, Yerf-Dog Fun Karts maintains an Authorized Service Center Network nationwide. Our authorized service centers will repair or replace parts under warranty at no extra charge, and can perform non-warranty repairs for a minimal charge.

Please complete and return the enclosed Registration Card today.

WARNING

- Children can be harmed by small parts, sharp edges and sharp points in the vehicles unassembled state. Care should be taken in unpacking and assembly of the vehicle. Children should not handle parts, or help in the assembly of the vehicle.
- Keep small parts and plastic bags out of children's reach. Dispose of plastic bags properly.
- Adult supervision is required at all times. Children do not have the judgement necessary to avoid many accidents. Be sure that children operating this vehicle can do so safely and that they are supervised at all times.
- Never use near steps, driveways, steep inclines, roadways, alleys, swimming pool areas or other bodies of water.
- Always wear shoes or sneakers when operating this vehicle.
- Never allow more than one rider.
- The rider should sit on the seat with seat belt fastened when vehicle is in operation.
- Hot motor covers. Do not touch.
- Never alter this vehicle or its motor drive system in any way.
- Never allow children to fill motor with gasoline. Fueling and maintenance should be done by adults only.
- Read Tecumseh Engine Operator's Manual for engine starting, care, and maintenance.

RULES FOR SAFE DRIVING

WARNING

- Improper use of this vehicle could lead to a serious or fatal accident. Allow children to play with this vehicle only when you have determined that they can do so safely. Follow all instructions to help your child enjoy this vehicle as safely as possible.

TEACH SAFETY RULES TO CHILDREN

- While children can quickly develop the skill necessary to drive this vehicle, it is important to remember that their judgement skills are still very immature. Unsupervised driving by children can lead to serious injury. Before children use the Yerf-Dog Pup, an adult should carefully evaluate the driving area as well as the children's skill level and ability to drive this vehicle safely. Children are not always able to recognize or anticipate hazards, even when they have been taught about them. There is no acceptable substitute for adult supervision.
 - Teach appropriate safety rules to your child before allowing operation of this vehicle. These rules should also be reviewed with neighborhood children or other playmates who want to drive this vehicle.
1. Do not allow any child to drive the vehicle in the street or near moving (motorized) vehicles.
 2. Do not allow any child to drive near bodies of water (such as pools or creeks), obstructions (such as furniture, low tree limbs or play equipment), or drop-offs (such as stairs or decks).
 3. Do not allow any child to drive the vehicle in the dark. A child could encounter unexpected obstacles and have an accident. Operate the vehicle only in the day-time or in well-lit area.
 4. Teach your child to avoid driving on steep inclines or slopes. Restrict your child's driving to areas that are fairly level with gentle inclines or slopes of no more than 10 degrees.
 - While driving down a steep slope, the vehicle may gain unsafe speed, even if the foot pedal is released to stop.
 - While driving across a steep slope, the vehicle may tilt and tip over. The wheels could lose traction, causing the vehicle to slip.
 - While driving up a steep incline, the motor may stop and the vehicle could roll backwards at an unsafe speed.

5. Do not operate this vehicle with more than one rider, seated on the seating area with seat belt fastened. A child who is not sitting on the seat or who is standing on the vehicle could fall off, cause a tip-over or block the driver's view. A child could be seriously injured.
6. Always wear shoes or sneakers when operating this vehicle.
7. Never put anything near any moving parts. Rotating parts such as motors, gear-boxes and wheels can snag fingers, hair, loose clothing, etc., causing serious injury.
8. Do not allow operation of the vehicle when it is on its side or in an upside-down position.
9. Do not operate the vehicle near flammable vapors (gasoline, paint thinner, acetone, liquid wax, etc.). Keep all flammable products in tightly sealed containers and away from the vehicle.
10. Do not allow a child to operate the vehicle without proper adult supervision.

TIRE PRESSURE

Often manufacturers of tires will over inflate the tires for a tight seal. Make sure the tire pressure is 40 PSI. Deflate tires to the specified pressure if needed.

PRODUCT SPECS

For children ages 3 to 8.

Gas 2.0 hp Tecumseh 2-cycle motor (no batteries).

7 mph top speed Safety lap belt for children.

Patented safety flag (pull flag and motor will shut off).

Accommodates children up to 120 lbs.

Adjustable seat ranging from 24"-28.5" from the seat to pedals.

Motor and muffler cover to avoid burns.

10" front and rear pneumatic tires.

On / off safety switch on the steering support.

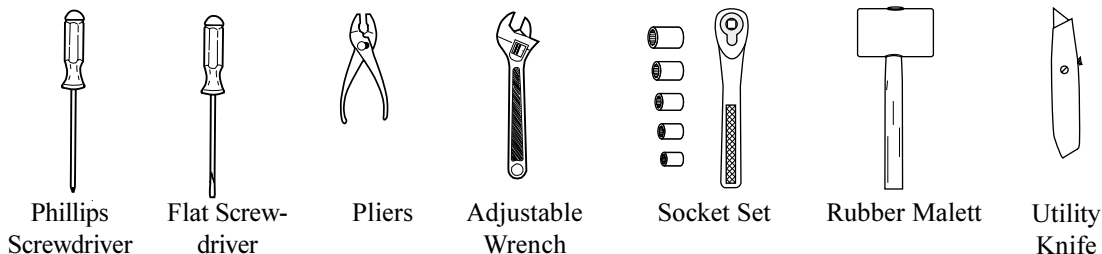
Product dimensions: 55" x 38" x 33"

Assembly required.

PARTS LIST

| Item | P/N | Description | Item | P/N | Description |
|------|----------|-----------------------------|------|----------|------------------------------|
| 1 | 02329 | CHASSIS; PURPLE; 3101 | 34 | 32001106 | LEFT SPINDLE, PURPLE |
| 2 | 84000010 | ASSY; TRANSMISSION | 35 | 32001006 | RIGHT SPINDLE, PURPLE |
| 3 | 36000100 | BRAKE DRUM | 36 | Q33100W | KILL SWITCH ASSY. |
| 4 | 27000200 | KEY, 3/16" x 3/16" x 3/4" | 37 | 81000600 | HARNESS, WIRING, 3101 |
| 5 | 84000000 | ENGINE, 2.0HP W/ MANUAL | 38 | 36000000 | BRAKE BAND |
| 6 | 31000906 | COVER, EXHAUST, BLACK | 39 | 01529 | SPRING, TENSIONER |
| 7 | 2400060A | SCREW PLASTITE #10 x 5/8" | 40 | 01265 | BRAKE BRACKET COVER |
| 8 | 36000900 | THROTTLE CABLE 3100 | 41 | 01237 | BRAKE BRACKET |
| 9 | 36001000 | CLUTCH ASSEMBLY 3100 | 42 | H91951W | SPACER, DRIVE, .782ID x .438 |
| 10 | H32503W | BOLT, HEX, 1/4-20 x 1.75" | 43 | 7200010A | HOUSING, TETHER |
| 11 | 000710P | WASHER, LOCK, 1/4" | 44 | 8300000A | MICRO SWITCH, ON/OFF |
| 12 | 23000100 | U-BOLT, 5/16" x 1-1/4" x 3" | 45 | 03252 | CABLE TIES, YELLOW |
| 13 | 31006200 | SPACER PLATE, 3" x 3/4" BL | 46 | 26000500 | SEAT BELT ASSY. |
| 14 | 001616P | WASHER, FLAT, 3/8" SPECIAL | 47 | 00204 | CLIP, SPRING, 1.425 LONG |
| 15 | HH1256T | NUT, NYLOCK, 5/16-18 | 48 | 01257 | BOLT, J, 1-1/2 x 2" |
| 16 | 23000400 | ROD, ENGINE SUPPORT | 49 | 03280 | SCREW, HEX, 3/8-16 x 4.5" |
| 17 | 001205P | NUT, HEX, 3/8-16, NYLOCK | 50 | 001203P | NUT, NYLOCK, 1/4"-20 |
| 18 | 01139 | DECAL, MADE IN THE U.S.A. | 51 | 22001600 | BOLT, HEX, 1/4"-20 x 3/4" |
| 19 | 01244 | DECAL, SHEET, 3101, PUP | 52 | 70001500 | NUT, PUSH 1/2" PLASTIC, BL |
| 20 | 01240 | ROD, THROTTLE / BRAKE | 53 | 70001600 | NUT, PUSH 3/4" PLASTIC, BL |
| 21 | 31000206 | TIE ROD, STEERING | 54 | 22001100 | EYE BOLT, OPEN 1/4"-20 x 2" |
| 22 | 03328 | SHAFT, STEERING KIT | 55 | 27000200 | KEY, 3/16 x 3/16 x 3/4 LONG |
| 23 | 36000400 | FRONT WHEEL, W/ BEARING | 56 | 2400160A | SCREW, SHT MTL, #4x5/8, ZINC |
| 24 | 36000500 | REAR WHEEL, W/ BEARING | 57 | 2400170A | SCREW, SHT MTL, #6x1/2, ZINC |
| 25 | 36000600 | REAR WHEEL, KEYED, W/BRNG | 58 | 001474P | SCREW, SHT MTL, #10x1/2 ZINC |
| 26 | 01245 | MAIN BRUSH GUARD | 59 | H91470W | RETAINING RING, 1/4" |
| 27 | 01248 | FRONT BRUSH GUARD | 60 | 001812P | WASHER, FLAT, 9/32ID x 5/8OD |
| 28 | 70001100 | SEAT, BLACK | 61 | H32503W | BOLT, HEX, 1/4-20 x .75" |
| 29 | H92560 | STEERING WHEEL | 62 | 001205P | NUT, HEX, 3/8-16 NYLOCK |
| 30 | 03283 | FLAG ASSEMBLY. | 63 | M00531W | PLUG, 7/8, WHITE |
| 31 | 43000200 | FOAM TUBING, YELLOW | 64 | 22001500 | BOLT, HEX, 1/4-20 x 2-1/4" |
| 32 | 03250 | SAFETY NET, 3101 | 65 | 03246 | OWNERS MANUAL |
| 33 | 31000806 | GAS PEDAL, PURPLE, 3100 | 66 | 31000600 | FLAG MOUNTING BRACKET |

TOOLS REQUIRED

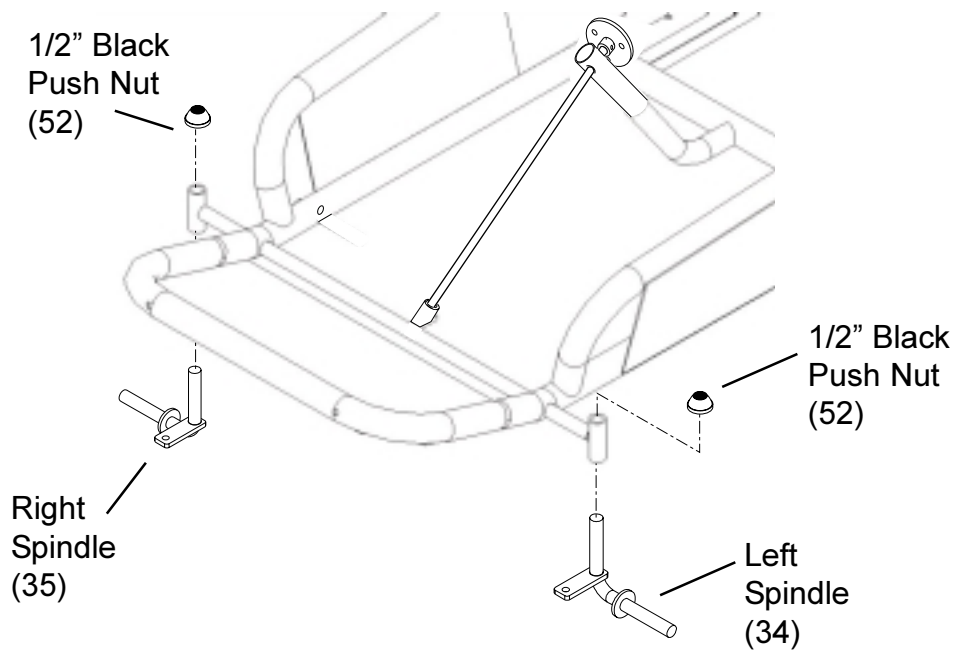


ASSEMBLY

NOTE: Some of the assembly steps may have already been completed at the factory.
If you find this is the case move on to the next assembly.

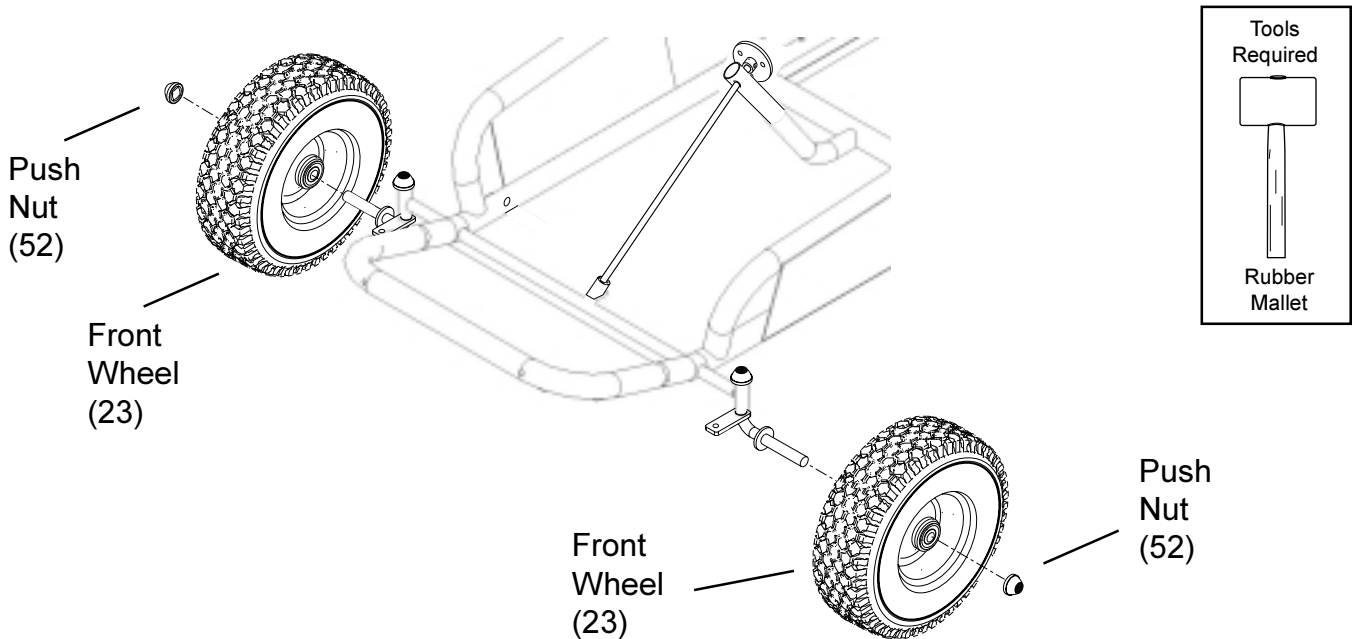
SPINDLES

Slide Spindles (34, 35) into the spindle mounts on the Frame (see illustration) making sure to keep the tab for the Tie Rod attachment facing forward. Using a hammer tap the Black Push Nuts 1/2" (52) in place



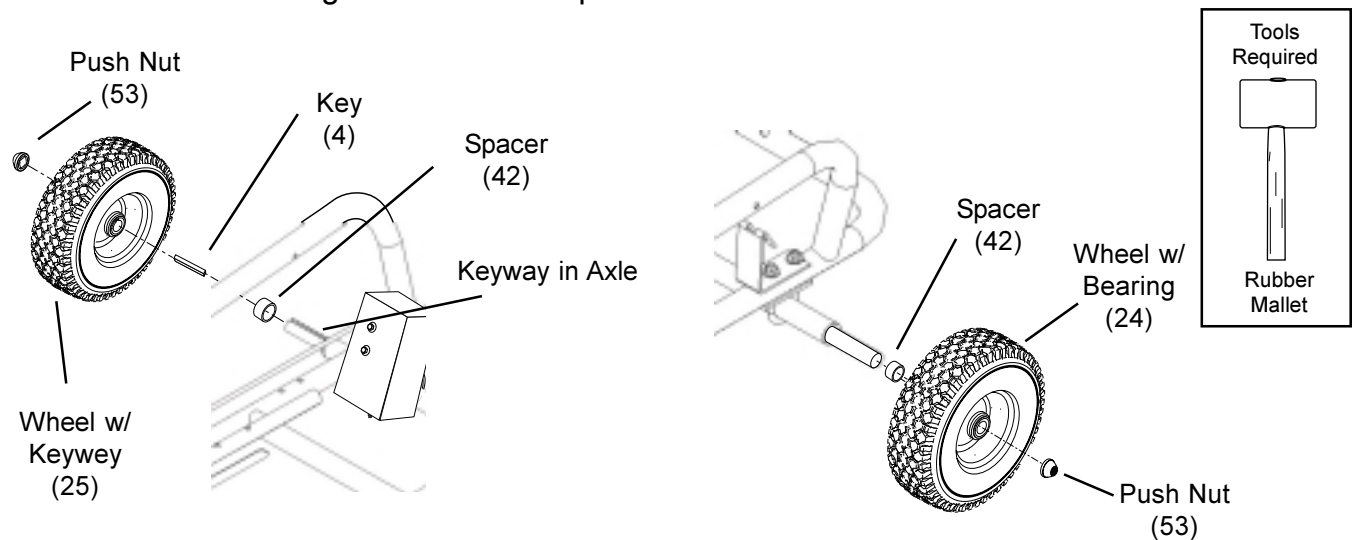
FRONT TIRES

Assemble Front Wheels (23) by sliding them onto the Spindles and tapping the Black Push Nuts 1/2" (52) onto the exposed Spindle ends using a rubber mallet.



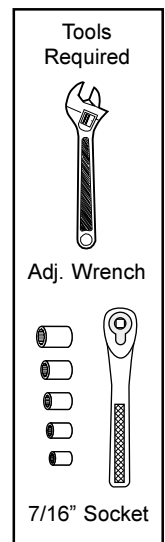
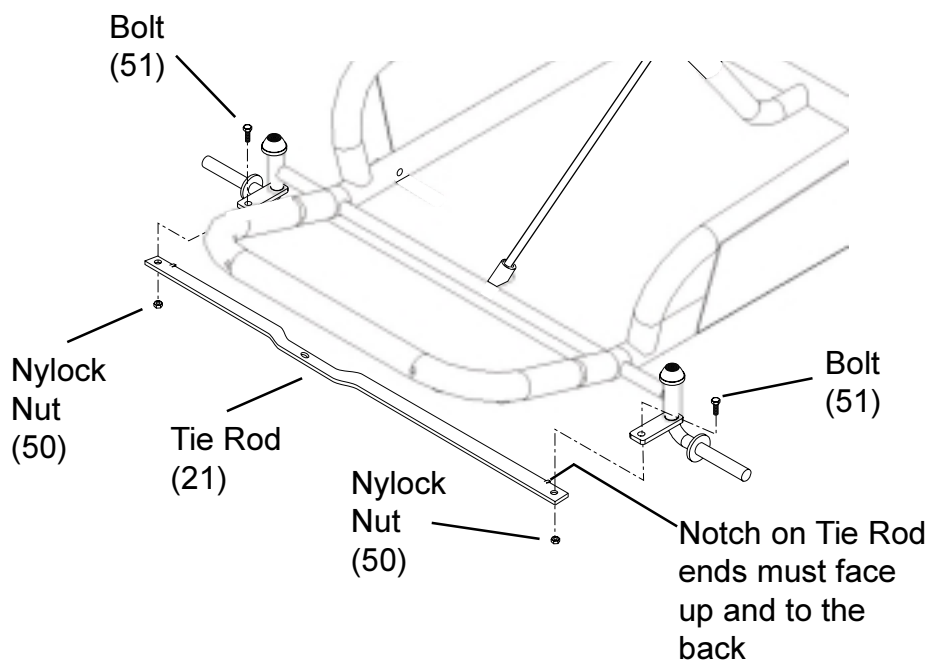
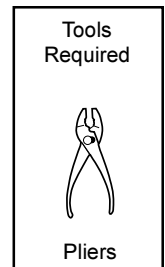
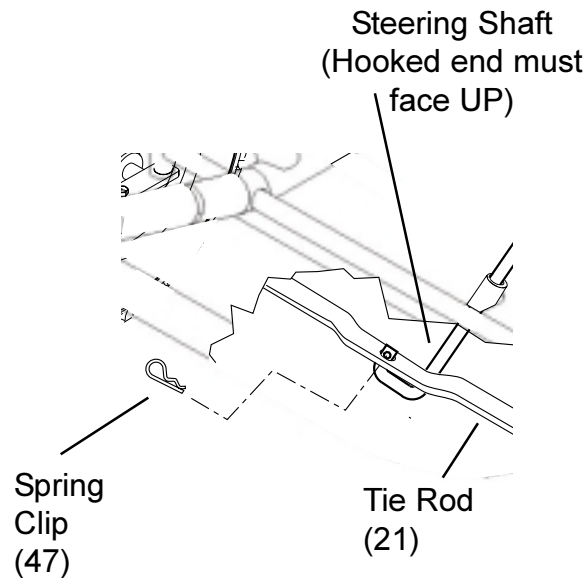
REAR WHEELS

To attach the Rear Wheels. Remove black sleeves from axle on both sides. On the Right side slide Spacer, Drive, .782 ID x .438 (42) Insert Key, 3/16 x 3/16 x .75" into keyway, and Slide Wheel w/ Keyway (25) onto Axle. Tap 3/4" Black Push Nut (53) into place with rubber mallet. For the Left side there is no key to install. Slide Spacer, Drive, .782 ID x .438 (42) onto Axle. Slide Wheel w/ Bearing onto Axle and tap 3/4" Black Push Nut on shaft.



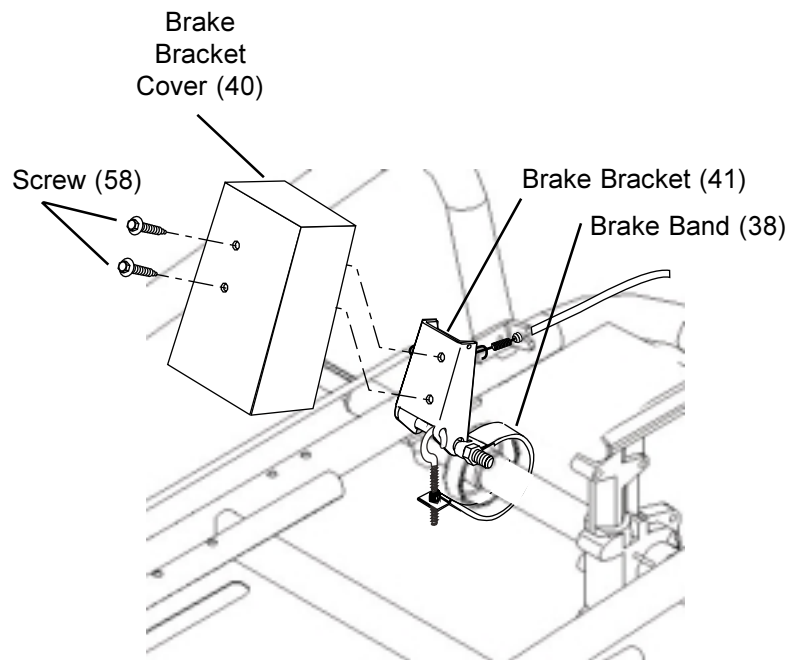
TIE ROD

Align Tie Rod (21) center hole with Steering Shaft. Attach Spring Clip (47) to bottom end of steering rod. Attach Tie Rod (21) to each spindle using 1/4-20 x 3/4" Bolts (51) and 1/4-20 Nylock Nuts (50). Make sure the notches in the Tie Rod face to the rear and are on top as shown. These notches are used to keep the wheel from turning too far either way. When attaching the nut and bolt do not overtighten, wheels must turn without binding.



BRAKE BRACKET COVER

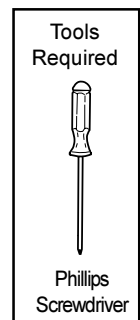
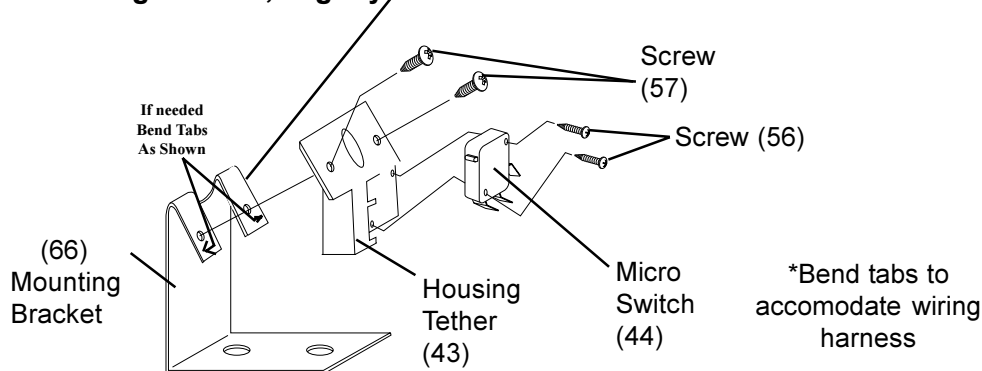
To install the Brake bracket cover (40), align holes in cover to holes in the Brake Bracket (41) as shown and attach with #10 x 1/2" Sheet Metal Screws (58)



SHUT-OFF SAFETY SWITCHES

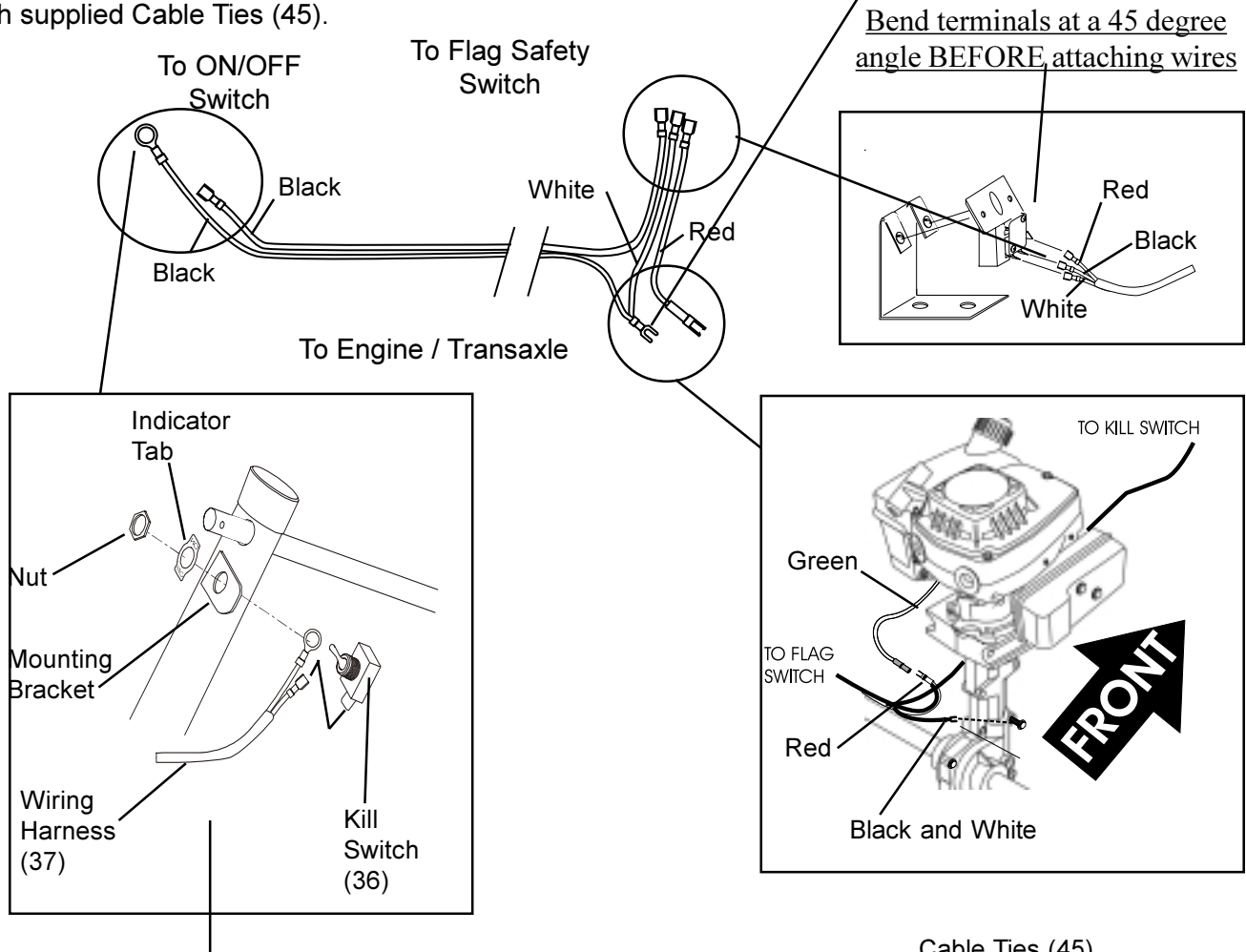
There are two Shut-Off Safety Switches on this model. The first is a Toggle Switch or Kill Switch and is located on the Steering Support Tube. The Kill Switch has been mounted at the factory. The other is the Flag Safety Switch, located above the left rear wheel.

Assemble the Flag Safety Switch using the parts shown below. Attach the Micro Switch (44) to the Housing Tether (43) using #4 x 5/8" screws (56). Gently bend tabs to a 45° angle as shown. Attach wiring Harness as shown in the next illustration (WIRING HARNESS). To attach the Flag Safety Switch, Position Switch **over** the tabs on the Mounting Bracket (66) as shown in the illustration. Secure with #6 x 1/2" screws (57). **Note: If the Housing Tether is hard to place between the tabs on the Mounting Bracket, slightly bend the tabs to the side.**



WIRING HARNESS

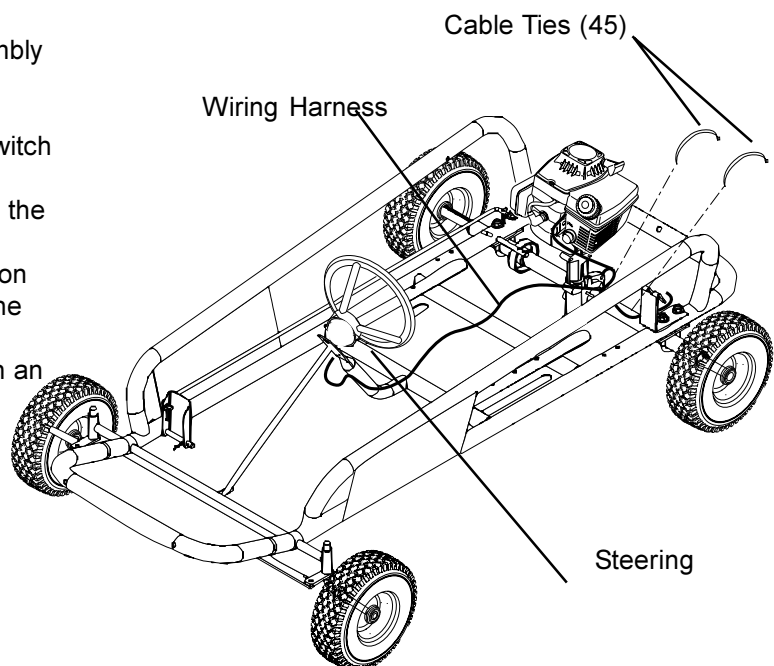
Attach the Wiring Harness as shown in the illustration. Slide the Blade terminals to the Flag Safety Switch, Red at the top, Black in the middle and White at the bottom. Clip round bullet terminal (Red wire) to the Engine wire (Green). Loosen Transaxle Bolt shown, slide spade terminal on bolt (Black and White wires). Tighten Transaxle bolt. Secure Wiring harness to steering support and left Axle tube with supplied Cable Ties (45).



Wiring Harness (37) and Kill Switch (36) assembly instructions:

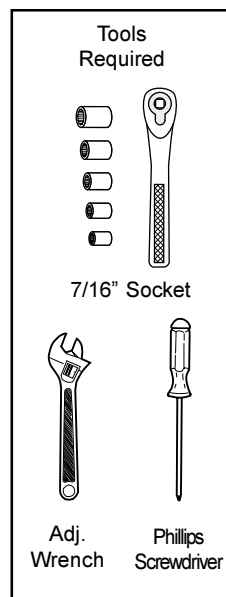
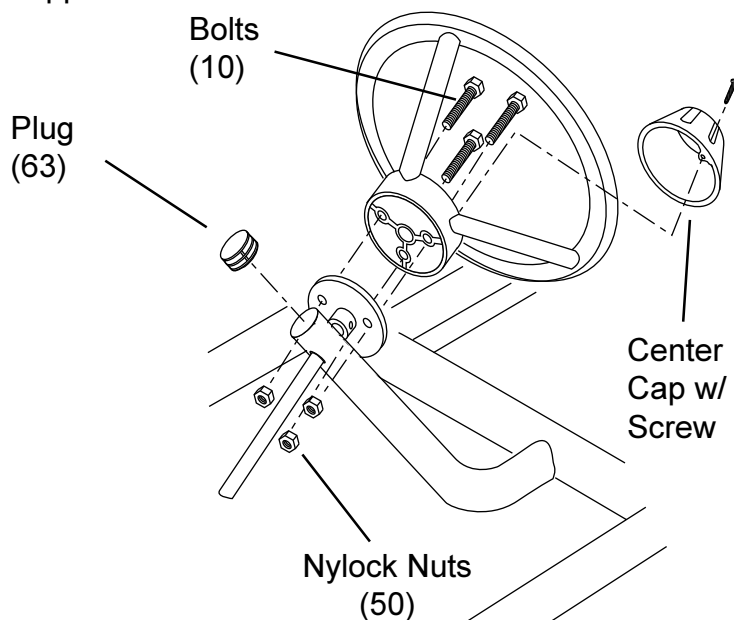
1. Remove the Nut from the Kill Switch (36).
2. Attach the Wiring Harness (37) on the Kill Switch (36) as shown above.
3. Insert the Kill Switch (36) through the hole in the Mounting Bracket (from the back).
4. Place the Indicator Tab over the Kill Switch (on the front of the Mounting Bracket)(make sure the word "ON" is pointing up).
5. Screw the Nut on the Kill Switch (tighten with an adjustable wrench or 9/16" wrench).

Note: The indicator tab and the Nut are not given a part number. They are part of the kill switch.



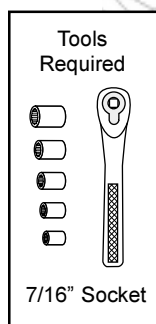
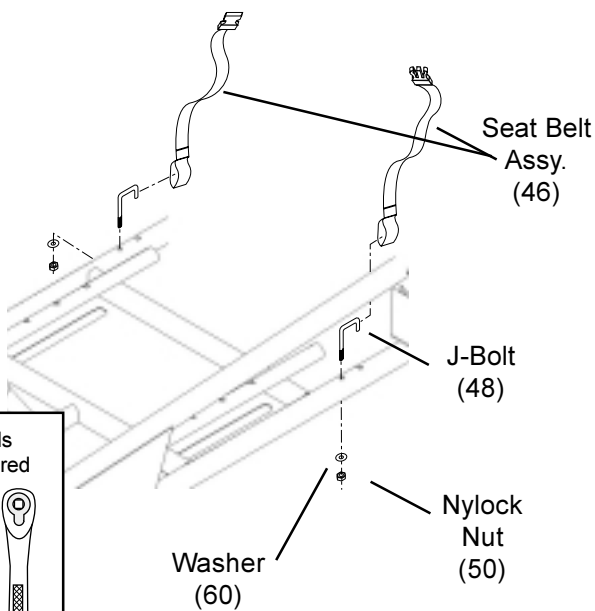
STEERING WHEEL

Slide Bolts, 1/4-20 x 1-3/4 (10) into mounting holes of Steering wheel. Align bolts to the Steering Wheel Collar, slide through. Attach 1/4"-20 Nylock Nuts (50) to the back side of collar. Tighten. Position Center Cap. Attach with supplied screw. Press 7/8" White Plug (63) onto Steering Support Tube.



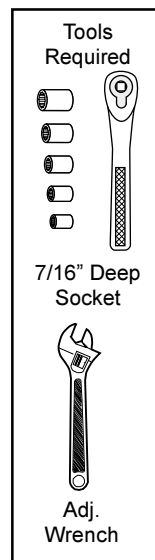
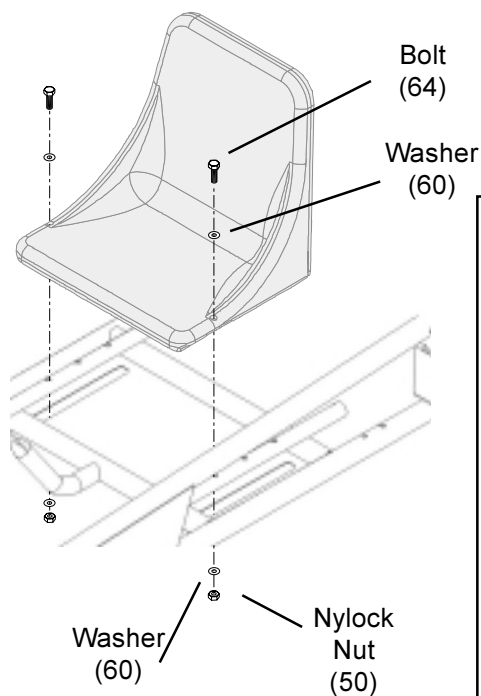
SEAT BELT

Secure the Seat Belt Assembly (46) to the Frames Main Tubes. Hook J-Bolt (48) through each looped end of Seat Belt, Slide into Frame Rail and secure using Flat Washer 9/32 I.D. 5/8 O.D. (60) and 1/4-20 Nylock Nuts (50).



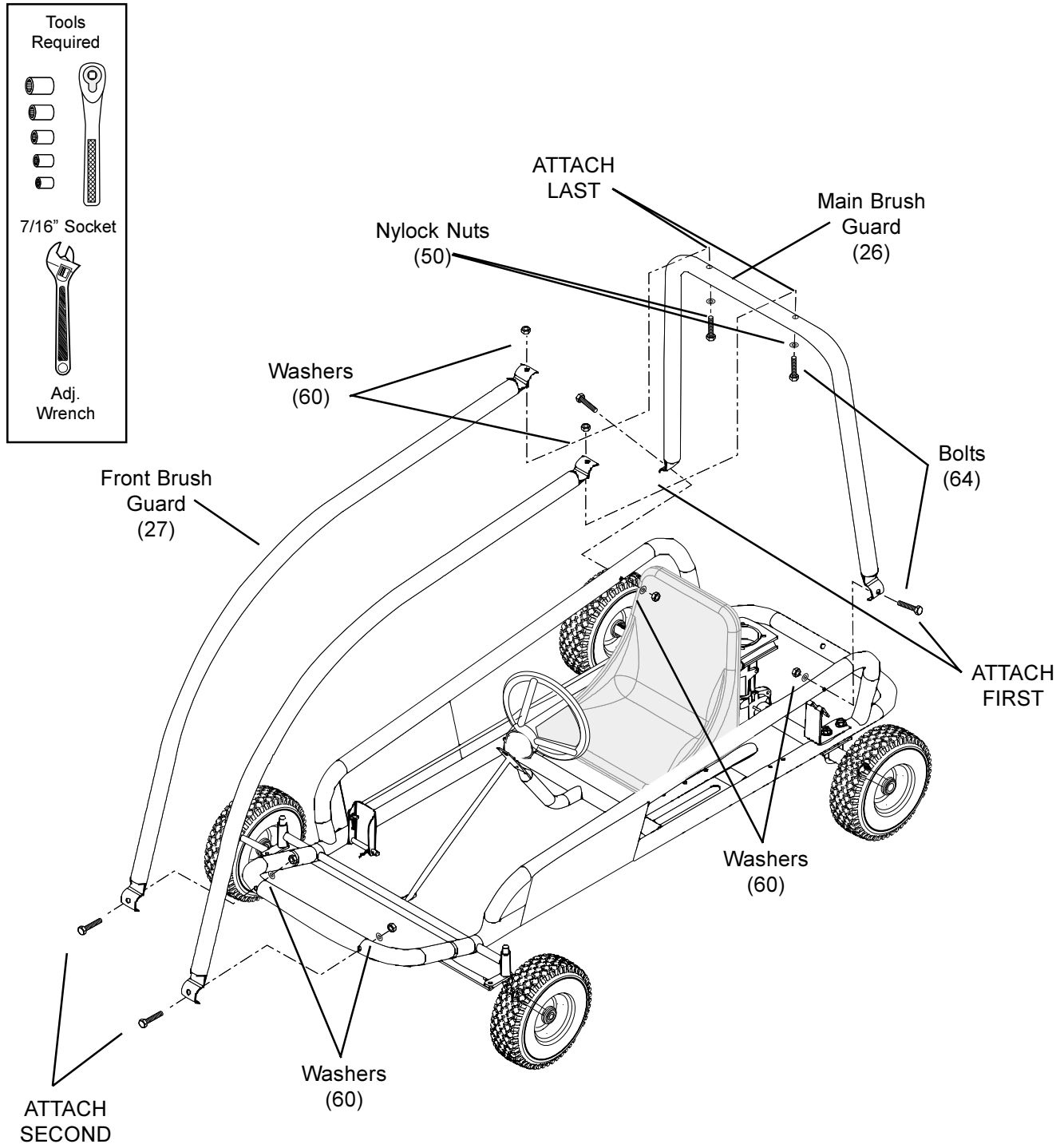
SEAT

Determine the position of the seat by the height of the child. Slide Bolts into holes secure using 1/4-20 x 2-1/4" Bolts (64), Flat Washers 9/32 I.D. 5/8 O.D. (60) and 1/4-20 Nylock Nuts (50). Do not overtighten.



BRUSH GUARD ASSEMBLY

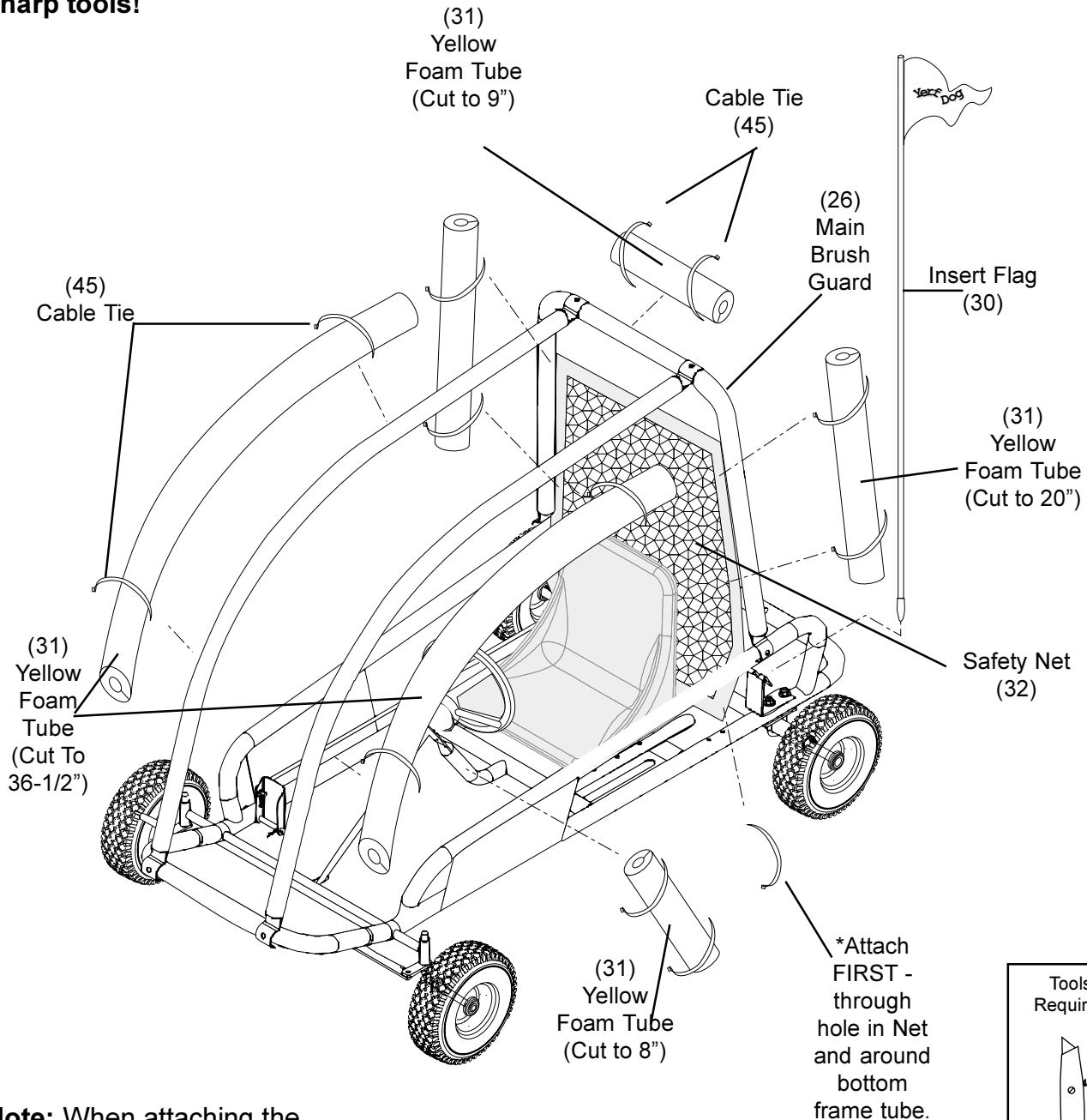
Attach Main Brush Guard to Frame with 1/4-20 x 2-1/4" Hex Bolts (64) Flat Washers 9/32" I.D. x 5/8" O.D. (60) and 1/4-20 Nylock Nuts (50). Attach Main Brushguard (26) first. attach Front Brush Guards (27) to the Main Brush Guard and Frame in the order shown, using the same hardware. Do NOT tighten bolts until all portions of Brush Guard have been loosely assembled.



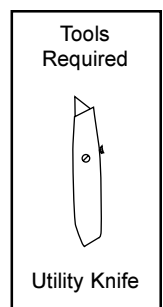
FOAM ATTACHMENT

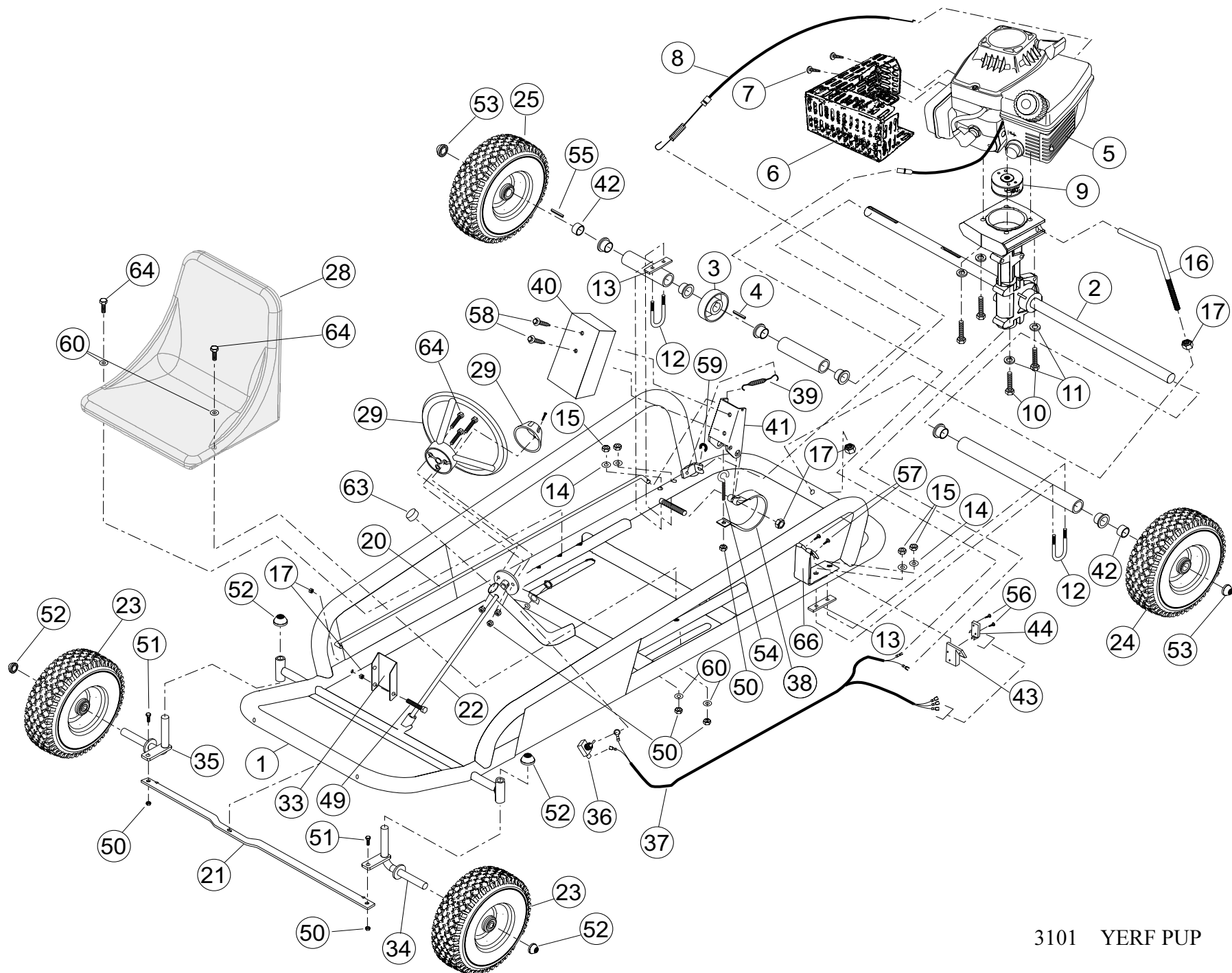
The recommended attachment of the Yellow Foam Padding is shown below. Before securing foam (31) with cable ties (45), align safety net (32) inside the Main Brush Guard (26). Secure foam (31) and safety Net (32) to the Main Brush Guard (26) at the same time. Trim excess portion of Cable Ties (45).

NOTE: The foam will need to be cut to the length shown. Use a utility knife to cut the foam along its length to allow you to slide foam over the tubing. Use care when handling sharp tools!



Note: When attaching the Safety netting, Secure at the bottom frame tube first. Attach the ties to the foam and netting last. This will make the Safety Netting fit correctly.





DECAL APPLICATION

The recommended attachment of the Decals is shown below. The Yerf-Dog logo labels are self adhesive peel and stick labels. No adhesive is required. Wipe the areas where the labels are to be applied with a clean dry cloth. Peel backing off labels and apply. To remove air bubbles from the label, rub them out with a clean dry cloth, using a circular motion.



FRONT OF KART



LEFT AND RIGHT SIDES



ENGINE



STEERING WHEEL

BRAKE BAND ADJUSTMENT AND REPLACEMENT

Adjustments to the brake band (38) may be necessary BEFORE initial use. This Fun Kart is designed to have the brake applied when the gas pedal is not pressed. If the brakes do not apply when the gas pedal is released, tighten the Brake Band adjusting nut. Do not over tighten, this will cause the brake band to not release when the gas pedal is pressed.

To replace Brake Band.

1. Remove Sheet Metal Screws #10 x 1/2" (58) and Brake Bracket Cover (40).
 2. Remove Spring Tensioner (39) and Throttle Cable Spring (8)
 3. Remove Spring Clip (47) and Nylock Nut (62)
 4. Slide Brake Band (38) and Brake Bracket (41) from Brake Mounting Bolt.
- Note: Leave Nylock (50) on Eye Bolt (54) for initial adjustment.
5. Remove Eye Bolt from Brake Bracket, slide Eye Bolt through hole in Brake Band and remove Brake Band from Axle.
 6. Installation is the reverse of removal

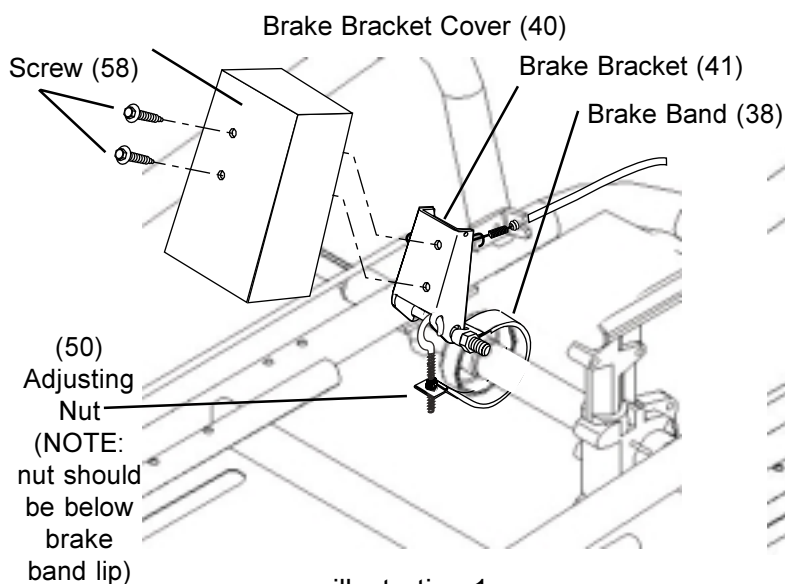


illustration 1

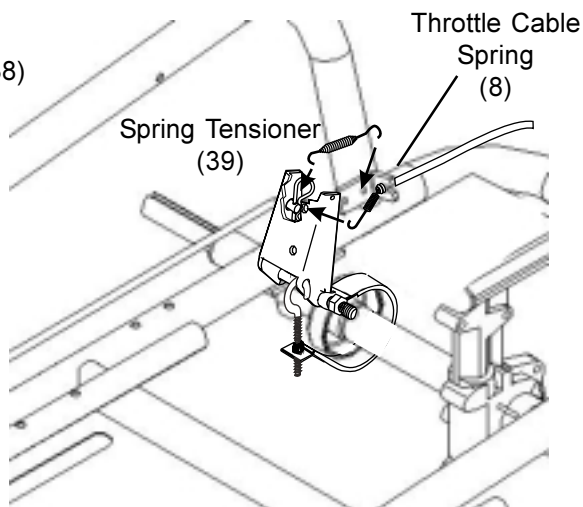


illustration 2

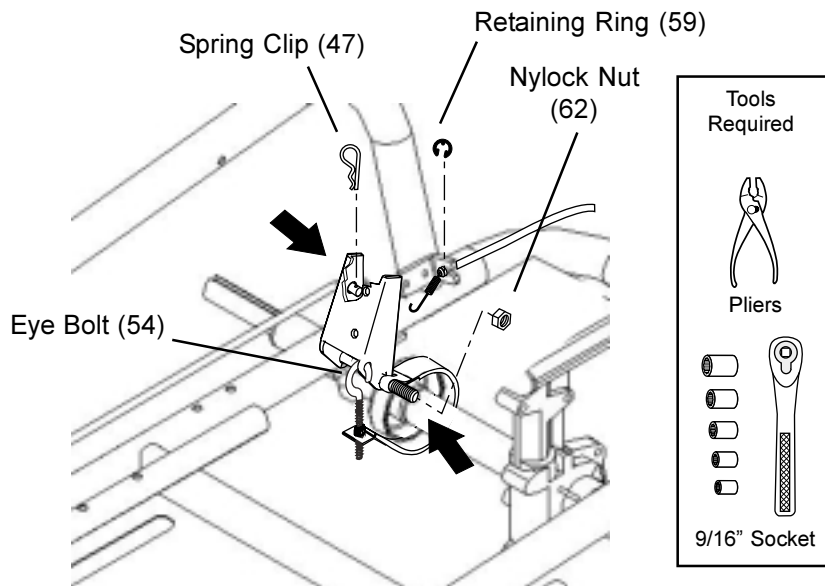


illustration 3

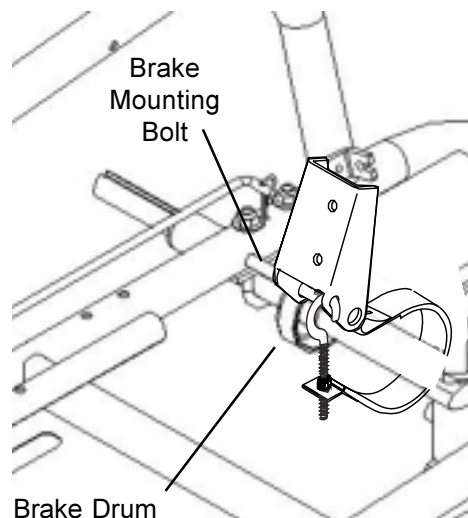


illustration 4

YERF-DOG Fun-Karts by Flexible Flyer

LIMITED WARRANTY

The *Limited Warranty* on this vehicle is in two (2) parts:

We offer the original purchaser of this product the following warranty:

PART 1

ENGINE

Tecumseh warrants the engine for (1) year, not Flexible Flyer. See Tecumseh Engine Owner's Manual. Engine repair, replacement parts, and warranty claims must be handled through an authorized dealer in your locality. Tecumseh has an extensive authorized sales and service dealer network. (See yellow pages of phone directory under "Engine-Gas").

PART 2

FRAME

The frame and related components are warranted by Flexible Flyer and are applied to any part found to be defective due to material and/or workmanship when inspected at the Flexible Flyer factory. Flexible Flyer will at its' option, repair or replace the defective parts to the original purchaser at no charge.

The warranty periods are as follows from the date of purchase:

- A. Frame for 90 days, Void if:
 - 1. Frame is broken or bent due to abuse (underside scraped abusively).
 - 2. Wheels are bent or broken due to impact.
 - 3. Spindles are bent due to impact.
 - 4. Paint is worn off of rear bumper indicating an extra rider.
 - 5. Axles are bent out of ordinary position either horizontally or vertically.
 - 6. Non-Factory altering of engine or it's components
- B. Transmission assembly for 30 days.
- C. Clutch for 30 days against breakage of its parts. No warranty is applied for wear of clutch shoes or clutch bearings due to service.
- D. Throttle cable, brake cable, brake band, chain, tires, seat, shocks, fasteners and other components are not warranted because due to normal service they are subject to excessive wear and abuse.

All Warranties are voided if the vehicle has been altered in any way or is used in racing or competition, rented, used under abnormal conditions, or subject to abuse, misuse, neglect, or improper maintenance.

Flexible Flyer is not liable for any damage claim or liability claim, personal or otherwise resulting from the operation of this vehicle in any way.

VEHICLE REGISTRATION AND WARRANTY CONFIRMATION

IMPORTANT!

Please return this information within 10 days of purchase to validate your warranty.

Return to:

**F.F. Acquisition Corp.
YERF-DOG Warranty Dept.
P.O. Box 1296
West Point, MS 39773**

Thank-you for purchasing this fine YERF-DOG product. With proper use, maintenance and service this cart will bring many years of fun and enjoyment. Please complete this vehicle registration and warranty confirmation form to ensure protection under the terms and conditions of the warranty and to verify ownership of this product.

To ensure maximum safety while operating your YERF-DOG Fun Kart, observe the following precautions:

**OPERATE THIS CART OFF ROAD ONLY
ADULT SUPERVISION FOR ALL OPERATORS
WEAR A D.O.T. APPROVED HELMET, PROTECTIVE EYE WEAR, AND CLOTHING
SECURE LONG HAIR AND LOOSE CLOTHING; KEEP ARMS, LEGS, AND FEET INSIDE THE CART
DO NOT OPERATE UNDER THE INFLUENCE OF DRUGS OR ALCOHOL**

To ensure maximum owner satisfaction and understanding of this product, you should:

**READ OWNERS MANUAL BEFORE OPERATING CART
REVIEW AND FULLY UNDERSTAND THE CART AND ENGINE WARRANTIES
INSPECT THE CART UPON DELIVERY
SECURE A COMPLETED COPY OF THIS CERTIFICATE FOR YOUR RECORDS**

In signing this document, the purchaser acknowledges that he/she understands the warranty limitations, safety, and maintenance guidelines outlined above and in the owner's manual and, therefore, agrees that all riders/operators will adhere to these specifications.

Model No.

Serial No.

Date of Purchase

First Name

Initial

Last Name

Street Address

City

State

Zip Code

Home Telephone Number

Parent's Signature

(Please enclose a copy of your proof of purchase.)
