



DKS200

SPORT

OWNER'S MANUAL




TABLE OF CONTENTS

1.	PREFACE.....	3
2.	SAFETY NOTICE.....	4
	2.1 Before Driving	
	2.2 While Driving	
3	EMI	7
4.	ASSEMBLY AND DISASSEMBLY.....	9
5.	PARTS INTRODUCTION.....	12
	Parts Description	
6.	OPERATION.....	13
	6.1 Control Panel	
	6.2 How to Operate Your Vehicle	
	6.3 Setting the Free Wheel and Drive Mode	
7.	CHARGING AND BATTERY.....	18
	7.1 Charging the Battery	
	7.2 Charging Cord and Plug	
	7.3 Battery	
8.	INSPECTION AND MAINTENANCE.....	21
	8.1 Daily Checking	
	8.2 Regular Checking Record	
	8.3 Fuse and Tires	
	8.4 Maintenance	
	8.5 Storage	
9.	TROUBLESHOOTING.....	25
10.	SPECIFICATIONS.....	27
11.	WARRANTY.....	28
	11.1 Vehicle Serial Number	
	11.2 Warranty Policy	

1. PREFACE

Carefully read this owner's manual before using the vehicle. Improper use of the vehicle could result in harm, injury or accidents.

- ◆ This owner's manual includes operation instructions for all aspects of the vehicle, assembly, and how to deal with possible accidents.
- ◆ This owner's manual is written solely for Bladez **B*Mobile, DKS200 - SPORT**.
- ◆ The symbols used in this manual are explained below.

 Warning	Improper use of this vehicle could lead to serious injury.
 Attention	Improper use of this vehicle could lead to personal injury and/or property damage.
 Suggestion	Follow these instructions to maintain safe and efficient operations of this vehicle.

- ◆ This manual includes a repair and maintenance record chart and the Warranty. Keep it in a safe place or in the vehicle.
- ◆ If someone else uses the vehicle, make sure that you give them the instruction manual for his or her reference.
- ◆ We reserve the right to make design modification without notifying the buyer. It is your responsibility to maintain an updated manual either by requesting it through mail or visiting our website. (www.ebladez.com)

“Caution: Federal law restricts this device to sale by or on the order of a practitioner licensed by the law of the State in which he/she practices.”

2. SAFETY NOTICE

2.1 Before Driving

The user should be familiar with all functions and features to operate this vehicle before driving. Always keep safety in mind. It may be beneficial when learning the operation of your vehicle to have an assistant such as a family member or a care professional present. To minimize any personal injury, read all of the following safety precautions prior to driving.

➤ **The same traffic rules that apply to pedestrians apply to the use of this vehicle**

For your safety, follow the rules that apply to pedestrians.

- ◆ Ride on the sidewalk, parkway or pedestrian areas only. Never ride on freeways or roads. It may be difficult for traffic to see you when driving your vehicle.
- ◆ Always be aware of all obstacles around you. (Cars, people, terrain, and weather).
- ◆ Be extremely cautious when driving your vehicle in busy areas, shopping malls, business centers, etc.
- ◆ If you take prescription drugs consult your physician before operating your vehicle. Some medications may impair your ability to maintain safe operation of your vehicle.
- ◆ Do not operate when under the influence of alcohol, this may impair your ability to operate your vehicle in a safe manner.
- ◆ Do not drive your vehicle at night.
- ◆ Obey pedestrian traffic lights.

➤ **Practice operating your vehicle**

The user must use care and common sense when driving the vehicle. While becoming familiar with the operation of your vehicle, practice in a wide open area, like a park. Keep in mind the status of the driving motion, such as accelerating, stopping, turning, reversing and up-and-down inclines while operating your vehicle.

- ◆ Set the speed dial to the low setting during your initial operation.
Be sure you are able to control and operate your vehicle easily and confidently. Then you can adjust your vehicle to a higher speed.

➤ **The B*Mobile vehicle is limited to one passenger**

Do not carry passengers on your vehicle. (Including children)

2. SAFETY NOTICE

➤ **Do not use this vehicle to carry or haul goods**

- ◆ The maximum weight that can be carried is 250 lbs (including goods). Refer to section “10-SPECIFICATIONS” on page 26 “WEIGHT CAPACITY”
- ◆ Maximum loading weight for the basket is 8.8 lbs.

2.2 While Driving

➤ **Do not make sharp turns at high speeds.**

- ◆ Such action may cause your scooter to tip over and cause injury.

➤ **Do not stretch your body out of the vehicle while driving**

- ◆ Such action may cause you to lose your balance or to be injured due to falling.
- ◆ Pay attention to avoid your clothes being tangled in the wheels.

➤ **When crossing train tracks.**

- ◆ Before entering the crossing stop completely. When crossing make sure that the vehicles wheels do not get stuck in tracks.

➤ **Do not use your vehicle under circumstances below.**

- ◆ Roads with heavy traffic, mud, gravel, bumps, snow or ice. Use caution on roads that have a canal or waterway without any fences or hedges, or that are too narrow. These conditions can affect the performance of your vehicle and could lead to an accident or injury.
- ◆ Do not drive at night or in raining, snowing, or misting weather. Driving in these conditions may affect your ability to drive in a safe manner and could lead to an accident or injury.
- ◆ Do not drive your vehicle in a zigzag motion or make sudden turns. Sudden turns or driving in a zigzag motion can result in the tipping of your vehicle and could lead to possible injury or damage to your vehicle. To avoid accidents, practice making turns to become familiar with how your vehicle maneuvers.
- ◆ Your vehicle is not designed to travel up or down stairs or escalators, always use an elevator.

➤ **Mobile phone and other electronic equipment.**

- ◆ Do not use a mobile phone or other wireless communication devices while driving.
- ◆ Do not charge your mobile phone or other electric device from your vehicles battery

➤ **Inclines and declines**

- ◆ Do not drive onto steep hills.
- ◆ When coming to an incline, you should adjust the speed dial to a middle setting and drive slowly. It is a good idea to maintain a safe speed and avoid any sudden stops or starts. When going downhill it is a good idea to set the speed dial to a low setting to insure a safe and controlled descent. Never put the vehicle in reverse when driving down a decline.

2. SAFETY NOTICE

- ◆ Do not drive over large drop offs. Refer to section “10-SPECIFICATIONS” on page 26 “MAX. GROUND CLEARANCE”
- ◆ Do not cross wide gutters as it may cause your wheels to get stuck.
- ◆ Slow down when driving on roads with drops offs.
- ◆ Do not make sudden turns when driving on gravel roads or ramps.
- ◆ Avoid any terrain or obstacle that makes you feel the vehicle will not perform in a safe manner.
- ◆ Many buildings now have ramps with 180 degree turns, so practice your turning skills so you do not get stuck on railings or other obstacles which could lead to injury.



WARNING

- ◆ Do not set the vehicle in free wheel mode when driving on an incline or decline.
- ◆ To protect yourself, while you are driving down a steep decline (over 13 degrees), the vehicle will not be driven automatically and an electromagnetic brake will activate, turn the power on again to restart your vehicle.
- ◆ For more information on free wheel mode go to section “6.3-Setting the Free Wheel and Drive Mode” on page 17.

➤ **Maximum User Weight Limit**

The maximum user weight limit is 250lbs. For more information, refer to section “10-SPECIFICATIONS” on page 26 “WEIGHT CAPACITY.” Loading over the limitation will lead to the damage of your vehicle or malfunction and potentially your safety. The warranty does not cover this type of over-loading damage or malfunction.

3. ELECTROMAGNETIC INTERFERENCE

This portion of the owner's manual will provide the user with basic information about the problems with EMI, known sources of EMI, and protective measures either to lessen the possibility of exposure or to minimize the degree of exposure. This section also shows some situations where unexpected or erratic movements may occur.

Caution: It is very important that you read this information regarding the possible effects of electromagnetic interference on your electric Bladez B*Mobile Vehicle.

➤ ELECTROMAGNETIC INTERFERENCE (EMI) FROM RADIO WAVE SOURCES

Powered vehicles may be susceptible to electromagnetic interference (EMI), which is interfering electromagnetic energy (EM) emitted from sources such as radio stations, TV stations, amateur radio (HAM) transmitters, two-way radios, and cellular phones. The interference from radio wave sources can cause your vehicle to release its brakes, move by itself, or move in unintended directions. It can also permanently damage your vehicle's control system. The intensity of the interfering EM energy can be measured in volts per meter (V/m). Each electric powered vehicle can resist EMI up to certain intensity. This is called its "immunity level". The higher the immunity level is, the greater the protection. At this time, current technology is capable of achieving at least a 20 V/m immunity level, which would provide useful protection from the more common sources of radiated EMI. This model as shipped, with no further modification, has an immunity level of 20 V/m without any accessories.

There are a number of sources of relatively intense electromagnetic fields in our everyday environment. Some of these sources are obvious and easy to avoid, others are not apparent and exposure is unavoidable. However, we believe that by following the warning listed below, your risk to EMI will be minimized.

The sources of radiated EMI can be broadly classified into three types:

1. Hand-held portable transceivers (transmitter-receivers) with the antenna mounted directly on the transmitting unit. Examples include: citizens band (CB) radios, walkie talkies, cellular telephones and other personal communication devices.

NOTE: Some cellular telephones and similar devices transmit signals while they are ON, even when not being used.

2. Medium-range mobile transceivers, such as those used in police cars, fire trucks, ambulances and taxis. These usually have the antenna mounted on the outside of the vehicle.

3. ELECTROMAGNETIC INTERFERENCE

3. Long-range transmitters and transceivers, such as commercial broadcast transmitter (radio and TV broadcast antenna towers) and amateur (HAM) radios.

Note: Other types of hand-held devices, such as cordless phones, laptop computers, AM/FM radios, TV sets, CD players, and cassette players, and small appliances, such as electric shavers and hair dryers, are not likely to cause EMI problems to your powered vehicle.

➤ **ELECTRIC POWERED VEHICLE ELECTROMAGNETIC INTERFERENCE (EMI)**

Because EM energy rapidly becomes more intense as you move closer to the transmitting antenna (source), the EM fields from hand-held radio wave sources (transceivers) are a concern. It is possible to unintentionally bring high levels of EM energy close to the powered vehicle's control system while using these devices. This can affect powered vehicle movement and braking. The warnings listed below are recommended to prevent possible interference with the control system of the powered vehicle.

➤ **WARNINGS**

Electromagnetic interference (EMI) from sources such as radio and TV stations, amateur radio (HAM) transmitters, two-way radios, and cellular phones can affect electrically powered vehicles. Following the warnings listed below should reduce the chance of unintended brake release or electrically powered vehicle movement that could lead to serious injuries.

1. Do not operate hand-held transceivers-receivers, such as citizens band (CB) radios, or turn ON personal communication devices, such as cellular phones, while the powered vehicle is turned ON.
2. Be aware of nearby transmitters, such as radio or TV stations, and try to avoid them.
3. If unintended movement or brake release occurs, turn the electrically powered vehicle OFF as soon as it is safe.
4. Be aware that adding accessories or components, or modifying the electrically powered vehicle, may make it more susceptible to EMI.
5. Report all incidents of unintended movement or brake release of the electric powered vehicle to the manufacturer, and note whether there is a source of EMI nearby.

4. ASSEMBLY AND DISASSEMBLY

Once the scooter has been removed from the box, follow these directions to assemble your scooter. This unit can also be disassembled for easy transportation and storage.

1. Your unit is configured with the seat folded and stored on the center of the vehicle. (Fig.1)
2. To adjust the tiller into the upright position, twist the tiller knob counter clockwise. Position the handlebars to the desired angle and tighten the tiller knob. (Fig. 2)

FIG. 1



FIG. 2



3. Insert the seat post into the seat post base. (Fig. 3)

FIG. 3



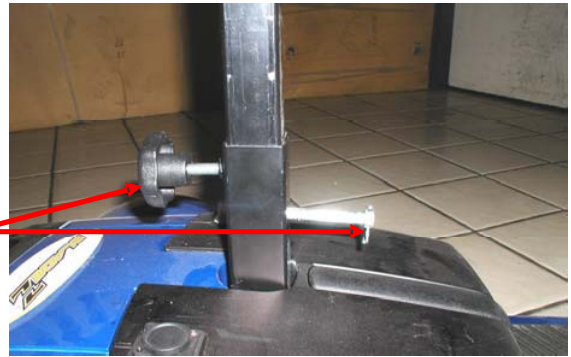
4. In order to lock the seat in place, lift up on the lever on the side of the seat, rotate slightly and release. (Fig. 4) This lever will also be used when you want to rotate the seat from side

FIG. 4



➤ **Adjusting the Seat Height**

1. Remove the seat height adjustment pin and loosen the seat stabilizer knob. (As shown by arrows)
2. Select the desired height adjustment and insert seat height adjustment pin and tighten the seat height stabilizer knob.
4. Replace seat as shown in figure 3.



➤ **Removing the Battery Pack**

1. To remove the battery pack, pull up on the handle. (As shown by the arrow) The battery pack will lift up away from the vehicle.

You may also remove the battery pack and charge the batteries separate from the unit.



➤ **Removing the Rear Wheel/Motor Assembly**

1. Once the battery pack is off, you will be able to remove the rear wheel/motor assembly from the vehicle.
2. Remove the frame pin and disconnect the power cable connector. (See arrows)

The rear wheel/motor assembly will slide out from the front foot deck assembly.



➤ **Note**

Disassembling your vehicle makes it easy to transport. It can also be useful to store the vehicle when not be use.

When the unit is not in use, batteries should be charged every three months to keep them on full charge and prevent damage.

➤ **Assembling the Rear Wheel/Motor Assembly to Front Deck Assembly**

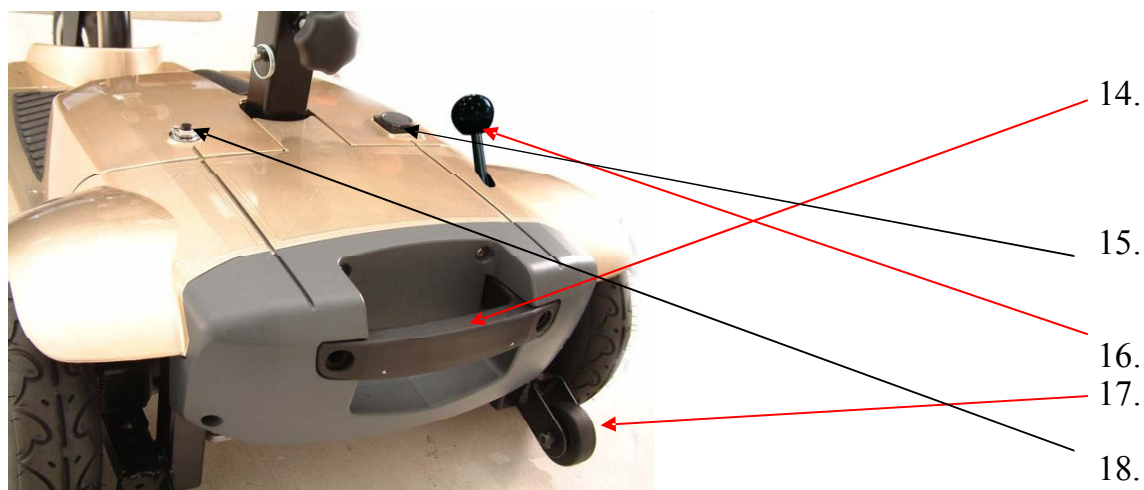
- ◆ Tilt rear wheel/motor assembly on the rear bumper with side frame stems pointing straight up.
- ◆ Lower the front deck assembly on the side frame stems. Once it is in place, secure the frame pin and reconnect the power cable connector. Be careful not to pinch the power cable between the front deck assembly and the rear wheel/motor assembly.



5. PARTS INTRODUCTION

➤ PARTS DESCRIPTION, DK S200

1. Speed Dial	2. Speed Control Lever	3. Rubber Handlebar
4. Tiller	5. Tiller Angle Adjustment Knob	6. Head Tube
7. Fork	8. Front Wheel	9. Foldable Rotating Seat
10. Seat Rotation Lever	11. Seat Height Adjustment Pin	12. Battery Box Handle
13. Rear Wheel	14. Rear Wheel/Motor Handle	15. Charger Socket
16. Free wheel Lever	17. Anti-Tip Wheels	18. Reset



6. OPERATION

6.1 CONTROL PANEL

1. Speed Dial
2. Horn Button
3. Handlebar
4. Power Key Switch
5. Speed Control Levers
6. Battery Indicator



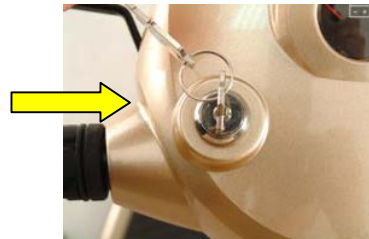
6.2 HOW TO OPERATE YOUR VEHICLE

➤ Power Key Switch

Turn the key to power “ON” or “OFF”

OFF: Power is turned off

ON: Power is turned on



➤ Speed Dial

Allows the user to adjust the forward and reverse speed.



➤ Forward, Reverse and Braking

- ◆ Pull the speed control lever down with your right hand and the vehicle will move forward.
- ◆ Pull the speed control lever down with your left hand and the vehicle will move backward.
- ◆ Release the speed control lever, the electromagnetic brake in the motor will be activated and the vehicle will stop.

6. OPERATION

➤ Horn Button

The horn will sound when the button is pressed.

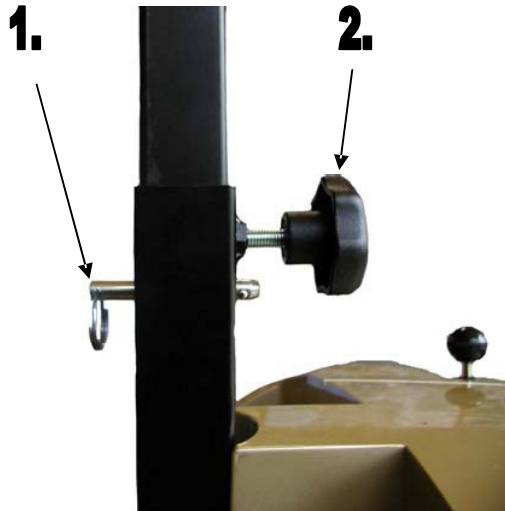


WARNING

When going down an incline, NEVER set to free wheel mode. In such cases, the electromagnetic brake will not activate.

➤ Seat

- ◆ The seat can be turned 360 degrees in 90 degree increments. Seat rotation is achieved by raising the seat lever bar, swiveling the seat to the desired location and releasing the seat lever handle to lock in place.
- ◆ Seat height can be adjusted by removing the seat height adjustment pin (Fig. 1) and loosening the seat adjustment knob (Fig. 2), adjust the seat to the desired height and then replace the pin and tighten the adjustment knob.



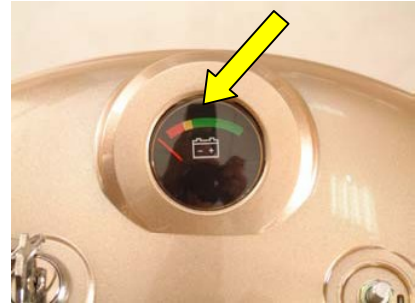
ATTENTION

Be sure to return the seat to the forward position before driving.

6. OPERATION

➤ Battery Indicator

- ◆ The needle points out the remaining power. Right side in green range: full power. Left-side in red range: low power recharge unit.
- ◆ The remaining power indicated by the battery indicator will vary by the driving time and the way the vehicle is driven. Repeated starting, stopping, and climbing will consume the power more quickly.



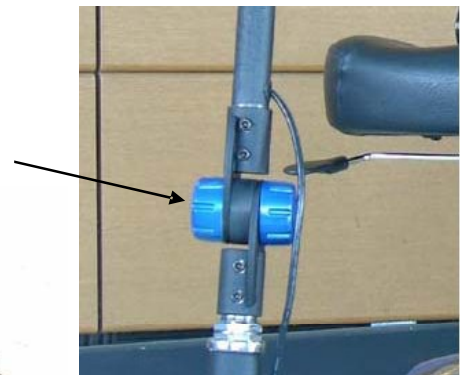
SUGGESTION

1. You are recommended to charge the batteries immediately when the needle points to the yellow or red area.
2. After charging or replacing the batteries, drive the vehicle for 2-3 minutes to make sure the battery holds a charge.
3. In winter, the batteries may respond slower and the traveling distance may be less than in the summer.
4. When driving on an incline, the needle may suddenly move to red and yellow area, and move back to the green area when the vehicle is on level ground. This is normal.
5. Under normal circumstances, it is natural for the capacity of the batteries to decay as time passes which will result in shorter range per charge as compared to new batteries. When you find the range per charge is about 50% of new batteries, it is suggested to replace batteries. If you continue to use the old batteries it may result in less range per charge.
6. Range per charge will be shortened when driving frequently on a slope or ground with big dips, due to more power consumption.

➤ Tiller Adjustment

The Tiller can be adjusted between 0 degrees and 80 degrees by following these steps:

1. Loosen the knob on the tiller.
2. Adjust the tiller to the desired angle and tighten the knob.
3. Release the lever and the tiller will be fixed at the desired angle.



6. OPERATION

➤ Starting and Driving

1. Make sure the seat is properly installed.
2. Make sure the tiller has been properly secured.
3. Turn the power key switch to “ON”.
4. Check battery indicator to see if there is sufficient power for your trip.
5. Set to the proper speed using the speed dial.
6. Make sure the forward / reverse speed lever as well as the electromagnetic brake are in working condition.

➤ Driving Speed

The speed scale is printed on speed dial label, ranging from left (Lowest speed) to right (Highest speed.) The end of right side is the maximum speed.

! ATTENTION

1. Do not push both right hand & left hand speed levers simultaneously. This may damage the speed levers and affect your control of the vehicle.
2. Do not turn the power key switch to “OFF” while driving. This will lead to an emergency stop and possible injury.
3. Do not set to highest speed when driving indoors.
4. Do not adjust speed dial while driving, the sudden change in speed may endanger you and cause the failure of your vehicle.
5. Do not place magnetic devices near the area of the control panel. This could affect the safe operation of your vehicle.
6. Be careful while driving in heavy traffic or crowded areas.
7. While in reverse, be aware of people or objects around you.

Speed Scale	Circumstances of Recommend speed
Left Side (Tortoise Decal)	◆ Speed equivalent to walking slowly ◆ Use while on an incline or decline ◆ Use while driving indoors or in a narrow space
Middle	◆ Speed equivalent to walking normally ◆ Use while driving outdoors on flat ground
Right Side (Rabbit Decal)	◆ Speed equivalent to walking quickly ◆ Use while driving in an open space

6. OPERATION

➤ Stopping

1. Release the speed lever completely. The vehicle will activate the electromagnetic brake and stop.
2. Turn the power key switch to “OFF”, and remove key from the vehicle.

! ATTENTION

- ◆ The stopping distance will vary with your speed.
- ◆ When parking your vehicle, park on flat ground and then turn the power key switch to “OFF” before you exit the vehicle.

6.3 SETING THE FREE WHEEL AND DRIVE MODE

- ◆ Drive Mode: Push the black knob down completely, and the vehicle can be driven by motor power.
- ◆ Free Wheel Mode: Lift the black knob up completely, and the vehicle can be moved manually.



7. CHARGING AND BATTERY

7.1 CHARGING THE BATTERY

Be sure to follow all procedures below.

FIG. 1



1. Turn the power key switch to “OFF”.
2. Open the charger socket cap and insert plug connected to the remote charger. (Fig. 1)
3. Do not stop the charge until the battery is completely charged.
4. The charging cycle (duration) is 8 hours, but it will vary up to 10 hours, based on the status of battery and ambient temperature.
5. The battery package can be removed from the vehicle and charged separately. (Fig. 2)
6. Disconnect the cord when charging is complete.

FIG.2



SUGGESTION

1. Do not disconnect the charger cord if the charging is not completed. The battery life will be seriously shortened or decayed if the batteries are repeatedly used without being fully charged. For optimum performance charge the batteries **every** day.
2. Always continue the charge until the needle stops in green area. Do not stop the charging cycle before it is complete.
3. While not in use, or in storage the batteries will slowly discharge if not plugged in.
4. If you do not use your vehicle for long periods of time, it should be charged at least every three months to keep the batteries in good condition.
5. Charging time will be affected by the ambient temperature, Therefore it will be longer in the wintertime.

! ATTENTION: Follow the rules below to avoid accidents while charging.

1. Make sure the battery voltage is correct.
2. Never disassemble or modify the plug.
3. Charge in a well ventilated space where the vehicle is not directly exposed to sunlight.
4. Do not charge in a space which is humid, or under rainfall and morning dew.
5. Do not cover the vehicle with any waterproof cloth or other objects while charging.
6. Do not charge in temperatures less than 14 degrees F or higher than 122 degrees F, as the charger may not work and the battery may be damaged.

7. CHARGING AND BATTERY

WARNING

1. Keep away from flammable objects while the vehicle is being charged to avoid potential fire or explosion of the batteries.
2. The batteries may produce hydrogen, and smoking is prohibited while charging. It is recommended to charge the batteries in a well ventilated area.
3. Never connect or disconnect the charger cord with wet hands. Do not connect or disconnect the charger cord if it is wet as it may result in an electrical shock.

7.2 CHARGING CORD AND PLUG

- ◆ Never pull out the charging cord before the battery is fully charged. The charging cord should always be away from heat and water. When charging, the cord needs to be tightly inserted in the sockets.



WARNING

Park the vehicle near the electric outlet and slowly pull out the charging cord. If the charging cord is broken, **DO NOT** charge the vehicle until a new charger cord is obtained from an authorized Bladez Health Products Corporation Service Center.

7.3 BATTERY

- ◆ The batteries used on your vehicle are sealed lead acid batteries, maintenance-free, so it is not necessary to change the batteries liquid or refill the liquid.

WARNING

Do not open the battery seal cap for any reason at any time.

7. CHARGING AND BATTERY

➤ **Cleaning the battery**

If the battery is contaminated by dirty water, battery acid, dust or other factors, the battery will discharge quickly. Follow these steps to clean the battery.

1. Turn the vehicles power key switch to “OFF”.
2. Remove the seat and the black rubber dust cover.
3. Remove the shroud and use a clean cloth to wipe off any soiled areas.
4. Remove the two (2) batteries and wipe with clean dry cloth. If the battery terminals are covered by residue, clean them by using warm water.



SUGGESTION

If necessary, contact your authorized Bladez Health Products Corporation Service Center for cleansing and replacing of the battery.



SUGGESTION

1. Make sure the battery wiring harnesses are installed properly on the terminals and re-install the shroud.
2. Do not use the batteries to charge telecom equipment or other items.
3. Always replace both batteries as a matched set. Replacing only one battery may cause an uneven voltage drop from the new battery and damage it.

8. INSPECTION AND MAINTENANCE

8.1 DAILY CHECKING

Carry out daily inspections. It is important to complete your daily checklist before each use to insure your vehicle will operate smoothly and safely.

Check the following items before driving. If you find anything abnormal, go to your authorized Bladez Health Products Corporation Service Center for further inspection before using it.

Item	Inspection Content
Handlebar	<ul style="list-style-type: none">◆ Are they loose?◆ Can they be turned left and right smoothly?
Speed Control Dial	<ul style="list-style-type: none">◆ Can it be adjusted freely and function properly?
Speed Control Lever	<ul style="list-style-type: none">◆ Does the vehicle move when the lever is pressed down?◆ Does the vehicle stop if the lever is released?
Motor	<ul style="list-style-type: none">◆ Are there any abnormal noises from the motor?◆ Does the electromagnetic brake work properly?
Free wheel Mode	<ul style="list-style-type: none">◆ Does free wheel mode lever work properly?
Battery Indicator	<ul style="list-style-type: none">◆ Does the needle move when power is switched on?◆ Is the remaining power enough for your trip?
Horn	<ul style="list-style-type: none">◆ Does the horn work properly?
Seat	<ul style="list-style-type: none">◆ Can the seat be turned and adjusted properly?
Tires	<ul style="list-style-type: none">◆ Are there any cracks or other damage to the tires?◆ Check the tires tread depth.
Other	<ul style="list-style-type: none">◆ Are there any abnormal noises?◆ Is there oil leakage from transmission box?

! ATTENTION

Go to authorized Bladez Health Products Corporation Service Center for inspection and maintenance if you find anything wrong.

8. INSPECTION AND MAINTENANCE

8.2 REGULAR CHECKING RECORD

To make sure your vehicle remains in good condition, go to your authorized Bladez Health Products Corporation Service Center regularly for maintenance and record it every six months after purchasing. (Maintenance fee may be required)



SUGGESTION

If you don't use your vehicle for an extended period, the vehicle still should be maintained regularly.

I – Inspection A-Adjustment R-Repair RP- Replacement T - Tightening
C - Clean L - Add Oil

Item \ Period		1 mo	6 mo	12 mo	18 mo	24 mo	30 mo
Control Panel	Forward/Reverse speed lever						
	The function of switches						
	Connection of Socket / Plug is good?						
Motor	Operation and Noise						
	Function of Electromagnetic Brakes						
	Connection of Socket / Plug is good?						
Transmi ssion	Free wheel mode lever						
	Any oil leakage from transmission box						
Battery	Looseness or corrosion of terminals						
	Connection of Socket / Plug is good						
	Any broken electrical cords						
Charger	Charging function and LED light						
	Any broken Sockets / Plugs / Cords						
Seat	Angle adjustment bar						
	Seat post looseness						
Tiller	Right /Left Turn of tiller						
	Adjustment of Tiller angle						
Tire	Crack or damage of tire surface						
	Tread depth						
	Abnormal wearing						

8. INSPECTION AND MAINTENANCE

Item \ Period		1 mo	6 mo	12 mo	18 mo	24 mo	30 mo
Wheel Rim	Tightness of bolts and nuts						
	Wear or deformation around tires						
Inspector	Checked by						
	Date Checked						

8.3 FUSE AND TIRES

➤ Fuse

The fuse is located inside the control panel cover. If the power key switch is “ON”, and the needle of the battery indicator doesn’t move, check the fuse.

SUGGESTION

Contact your authorized Bladez Health Products Corporation Service Center for inspecting or replacing the fuse, since the control panel shroud has to be removed first for replacement of the fuse.

➤ Tires

- ◆ The condition of the tires depends on how you drive and use your vehicle.
- ◆ When tread depth is below 0.5mm, it can easily lead to vehicle slippage, making braking distances longer. Replace the tires as soon as possible.

8. INSPECTION AND MAINTENANCE

8.4 MAINTENANCE

- ◆ You must maintain the vehicle frequently if you constantly drive on grass, sand, or gravel roads.
- ◆ Do not use water, oil or other chemical solutions to clean your vehicle. To prevent damaging the electronic components and PC board, do not spray the vehicle with water.
- ◆ Take the vehicle to an authorized Bladez Health Products Corporation Service Center for repairs and adjustments. Improper adjustments may lead to accidents or vehicle malfunction.
- ◆ Use soft and dry cloths to keep your vehicle clean for optimum appearance and performance.

! ATTENTION

When conducting the maintenance of your vehicle, turn the power key switch to “OFF” and make sure the remote charger is not plugged into the vehicle.

i SUGGESTION

- ◆ Do not splash water directly on your vehicle. This could lead to the malfunction of the electric system.
- ◆ Do not use gasoline, solvents or vaporizing solution, as they may deform or damage the shroud.
- ◆ Using car wax is not recommended.

8.5 STORAGE

- ◆ The power key switch is turned to “OFF”.
- ◆ Store vehicle in clean dry location.

i SUGGESTION

Store the vehicle in a location where it is out of direct sunlight, rain, snow or other weather elements. When stored for a long time, fully charge the battery and then disconnect the battery cables from the battery terminals. For any details, inquire at your authorized Bladez Health Products Corporation Service Center.

9. TROUBLESHOOTING

➤ **Vehicle Turns On But Does Not Move**

- ◆ May be in free wheel mode.
- ◆ Make sure lever is completely pushed down to engage drive mode, then turn off the vehicle and turn it back on to reset the controller.

➤ **Vehicle Moves Slowly**

- ◆ The weight limit of the vehicle may have been exceeded. Please refer to “Maximum Weight Limit” for weight specifications.
- ◆ Vehicle battery charge may be low. Check the battery indicator on the control panel and charge if needed.
- ◆ Check for obstructions on or around the vehicle or in your pathway.
- ◆ Check adjustable speed dial.

➤ **Vehicle Has No Power**

- ◆ Check the fuse which is located in the control panel shroud.
- ◆ Check the battery connections by opening the battery box and inspect all wires to see if they have been pinched or frayed.
- ◆ If the vehicle hasn’t been charged regularly, the batteries may be completely discharged. Charge the batteries and recheck. If batteries do not recharge, contact your authorized Bladez Health Products Corporation Service Center for replacement batteries.

10. SPECIFICATIONS

	DKS200
Model name	B*Mobile – Sport
Overall Height (without seat)	35"
Overall Length	38"
Overall Width	20"
Motor Output	DC 24V 270W
Battery	12V×12AH×2PCs
Charger	HP 24V 2AMP (Automatic Type) off-board
Front Wheel	2"x8" Foam Filled Flat Free Tire Mag Wheel
Rear Wheel	2"x8" Foam Filled Flat Free Tire Mag Wheel
Break System	Intelligent regenerative electromagnetic brake
Net Weight	95 lbs (including seat and battery)
Slope Grade Ability	13 Degrees
Weight Capacity	250 lbs
Range Per Charge	Up to 10 Miles
Maximum Speed	Forward: 4.5 mph
Turning Radius	36"
Maximum Ground Clearance	2"
Seat Overall Height	13"
Seat Overall Width	16"
Seat Overall Depth	16"
Seat Overall Weight	15 lbs

Remark -- The manufacturer reserves the right to modify the specifications if needed. The final specifications are subject to any change when you purchase the vehicle at the shop.

Maximum driving distance is based on the conditions of ambient temperature, a 150 lbs driver and brand-new fully charged batteries at a constant driving speed of 4.5 mph with 70% of battery power being discharged.

11. WARRANTY

11.1 VSN (VEHICLE SERIAL NUMBER)

To ensure after-sale service and warranty service, fill in the vehicle serial number that is stuck on the back right hand side of the frame.

Model	DKS200
Serial #	

11.2 WARRANTY POLICY

11.2.1 Contents and Duration of Warranty

➤ **Contents of Warranty**

1. For one year from the date of purchase, Bladez Health Products Corporation will replace at our option, free of charge, any part or electronic component found to be defective due to workmanship and/or material upon the examination by an authorized Bladez Health Products Corporation Service Center.
2. Warranty can be performed by authorized Bladez Health Products Corporation Service Centers only.
3. Transportation costs for repair or replacement will be the purchasers responsibility.
4. Replaced parts will be the property of Bladez Health Products Corporation. Do not return faulty part(s) to Bladez Health Products Corporation without prior consent.

NOTE: Some states do not allow limitations on how long an implied warranty lasts or does not allow the exclusion of limitations of incidental or consequential damages.

➤ **Warranty duration and parts covered by the warranty**

Parts and Labor	1 year from the date of purchase.
General Items	1 year from the date of purchase.
Battery	Warranty by the battery manufacturer. The battery is not warranted by Bladez Health Products Corporation.

11. WARRANTY

11.2.2 Items Not Covered By Warranty

➤ **Items listed below:**

1. Normal maintenance adjustments (as covered in the owner's manual) are the responsibility of the consumer.
2. Wear items and cosmetic damages will not be covered under warranty. These items include but are not limited to:
 - a. ABS plastic shroud and footrest covers.
 - b. Batteries.
 - c. Tires and Tubes.
 - d. Upholstery and Seating.
 - e. Repairs or modifications made to any part of the unit without specific and prior consent from Bladez Health Products Corporation.
 - f. Acts of God or circumstances outside of Bladez Health Products Corporations control.
 - g. Damage caused by: Battery fluid spillage or leakage, abuse, misuse, accident, or negligence, improper operation, maintenance, or storage, commercial use or use other than normal.
3. Damage resulting from improper usage, accidents, or failure to operate and/or maintain the equipment in accordance with the owner's manual.
4. Modifications or repairs performed by unauthorized service centers or the use of non-genuine Bladez Parts will not be covered under warranty.
5. Failure of unit due to use of part or accessories not supplied or recommended by Bladez Health Products Corporation.

➤ **Problems caused by the following reasons are not covered:**

1. Failure to carry out regular inspection and maintenance recommended by this owner's manual.
2. Improper storage.
3. Tampering by changing or adding components to the vehicle which is not approved by Bladez Health Product Corporation.
4. Damage caused by not using Bladez Health Products Corporation genuine parts, or any parts not recommended by Bladez Health Products Corporation.
5. Abuse or misuse of the vehicle such as driving over curbs or exceeding the weight limit.
6. Driving in places that the vehicle was not designed for, such as sand, gravel, or dirt roads.
7. Damage or surface corrosion from environment such as airborne fallout (chemicals, tree sap, etc.) stones, hail, windstorm, lightning, flood, etc.

11. WARRANTY

11.2.3 The responsibility of user:

1. Proper use of the vehicle in accordance with this Owner's Manual.
2. The carrying out of daily inspections.
3. The carrying out of the regular maintenance set by this company.
4. Keep a record of vehicle inspection and maintenance in this Owner's Manual.

11.2.4 Warranty effectiveness

The product registration form must be completely filled out and stamped by the Bladez Health Products Corporation dealer where it was purchased.

11.2.5 Warranty rights are non-Transferable

Bladez Health Products Corporation warranty is non-transferable. The warranty will only be honored to the original purchaser.

NOTE: Implied warranties, including those of merchantability and fitness for a particular purpose, are limited to one year from the date of original purchase and to the extent permitted by law. Any and all implied warranties are excluded. This is the exclusion remedy. Liabilities for consequential damages under any and all warranties are excluded.